



Building Resilience: WSDA's Efforts in Animal Health, Food Safety, and Environmental Sustainability

Agriculture and Natural Resources Committee Meeting

Presented By: Derek I. Sandison, Director; Laura Butler, Legislative Liaison; Amber Itle, State Veterinarian; Luisa Castro, Food Safety & Consumer Services Division Assistant Director; and Dani Gelardi, Soil Scientist



Washington
State Department of
Agriculture

WSDA Core Services and Responsibilities

- Supporting agricultural viability
- Strengthening food supply chains and ensuring food security.
- Protection of the environment through regulation of pesticides, fertilizers, and dairy nutrients.
- Food safety
- Pest and disease management
- Commodity marketing and trade
- Animal health and welfare



About Washington Farms

- **32,076** – total number of farms (2022). Most farms are family owned.
 - **300+** - variety of crops grown in Washington.
 - **\$13.4 billion** – market value of crops and livestock (2023).
- **\$1.99 billion** – value of apples, state’s top crop
 - **89%** - percent of Washington farms considered small farms
 - 82% - less than 180 acres
 - 67% - less than 50 acres



Top 10 Commodities in Washington*

(2023)



1

APPLES

\$1.991 billion



2

CATTLE

\$1.332 billion



3

MILK

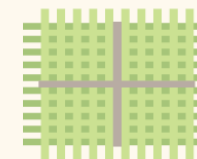
\$1.331 billion



4

POTATOES

\$1.160 billion



5

HAY

\$861.7 million



6

WHEAT

\$672.2 million



7

EGGS

\$405.9 million



8

HOPS

\$405.8 million



9

ONIONS

\$383.7 million



10

GRAPES

\$309.3 million

Source: USDA National Agricultural Statistics Service, unless otherwise noted. *USDA statistics exclude cannabis.

Washington's Top Export Destinations & Export Products



Top Export Destinations

Canada	\$1.3 billion
Japan	\$1.2 billion
China	\$857 million
Mexico	\$687 million
South Korea	\$497 million

Top Export Products

Frozen French Fries	\$1.1 billion
Fish and Seafood	\$1.1 billion
Wheat	\$684 million
Apples	\$683 million
Dairy	\$563 million

The State of Agriculture in Washington

Factors affecting the agricultural industry:

- Land access and availability
- Increasing input costs
- Labor
- Market infrastructure and support services
- Trade policy
- Technical/research support
- Water availability
- Regulations
- Weather/climate
- Pest pressures (Little Cherry disease)



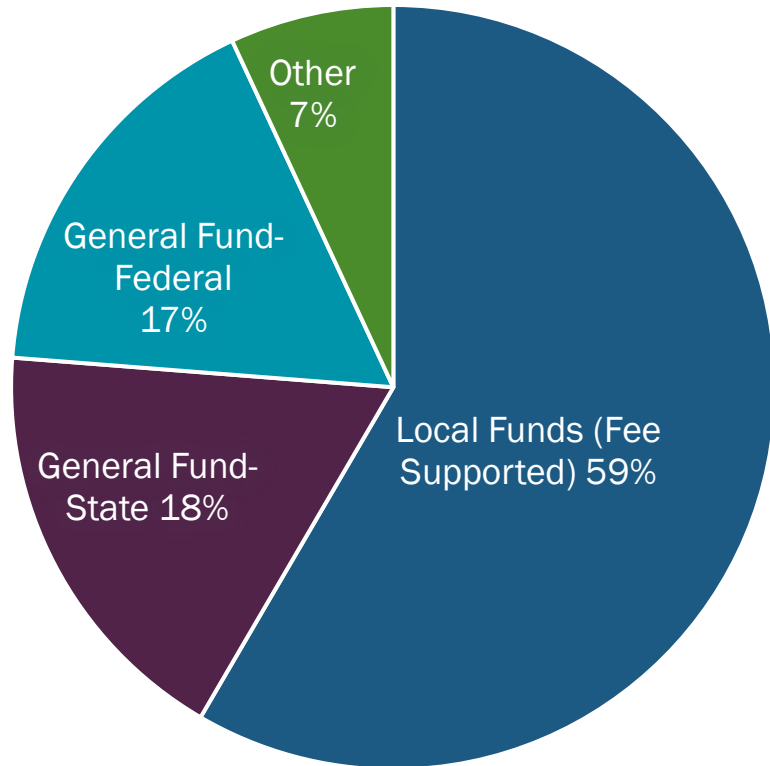
Photo credit: Dr. Andrea Bixby Brosi, WSU

2025-2027 Biennial Operating Budget

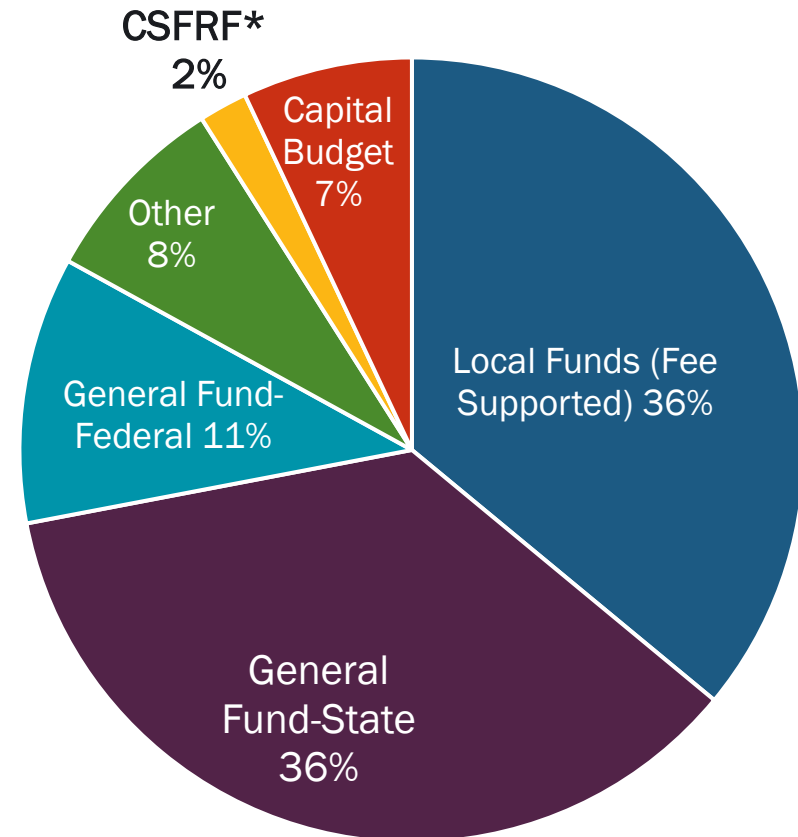
- WSDA Submitted
 - **Twenty-three** budget decision packages
 - Focused on
 - Advancing equity and food systems
 - Improving essential agency functions
 - Eradicating invasive pests

WSDA Funding Source Comparison 2019 to Present

WSDA 2019 Pre-COVID Budget:
\$108 Million



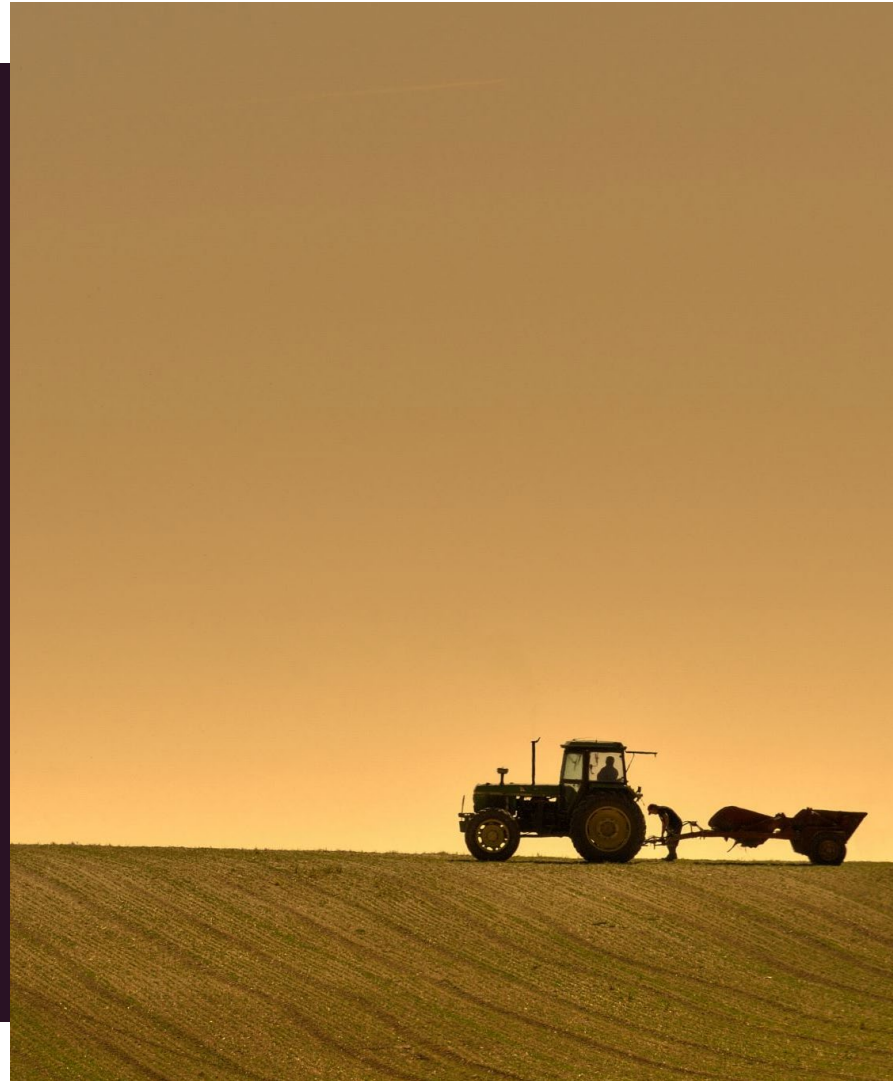
WSDA 2025 Budget: \$218.5 Million



*CSFRF – Coronavirus State Fiscal Recovery Fund expires at the end of FY25.

Agency Requests for this Legislative Session

- Japanese Beetle Eradication
(*\$9.52M, ongoing*)
- Sustained Enhanced Food Assistance
(*\$93.25M, ongoing*)
- Growing Diverse Leaders in Agriculture - Part II
(*\$2.476M, ongoing*)
- Advancing Equity and HEAL Act Funding
(*\$1.243M, ongoing*)



- Labeling and Promotion Program for Washington Food and Agricultural Products
(*\$1.317M, ongoing*)
- Agricultural Climate Resilience
(*\$6.896M, ongoing - CCA*)
- Funding gaps in Food Safety and Plant Protection associated with reduction in Federal Cooperative dollars.

Animal Health Program

Presented by: Dr. Amber J. Itle VMD MS



Mission of the WSDA Animal Health Program

- Protect and enhance **animal health** and well-being.
- Promote the **economic vitality** of the livestock industry by minimizing exposure to animal diseases.
- Safeguard **public health** by identifying and limiting exposure to zoonotic diseases.
- **VISION:** Protecting Washington livestock and companion animals through **collaboration, education, regulation, preparation** and **public service**.



Animal Health



Avian Health



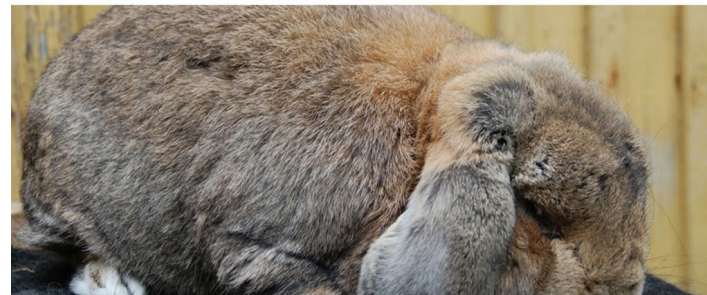
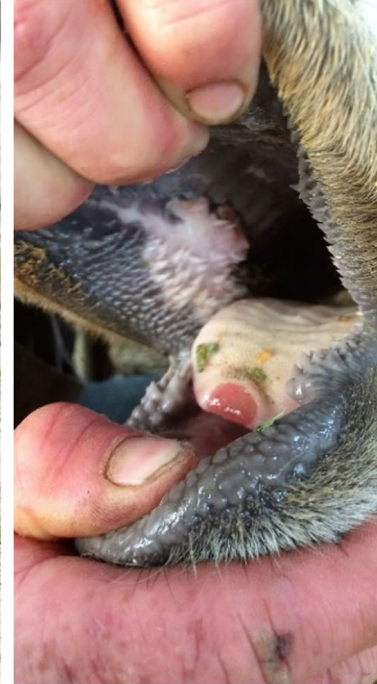
Animal Disease
Traceability

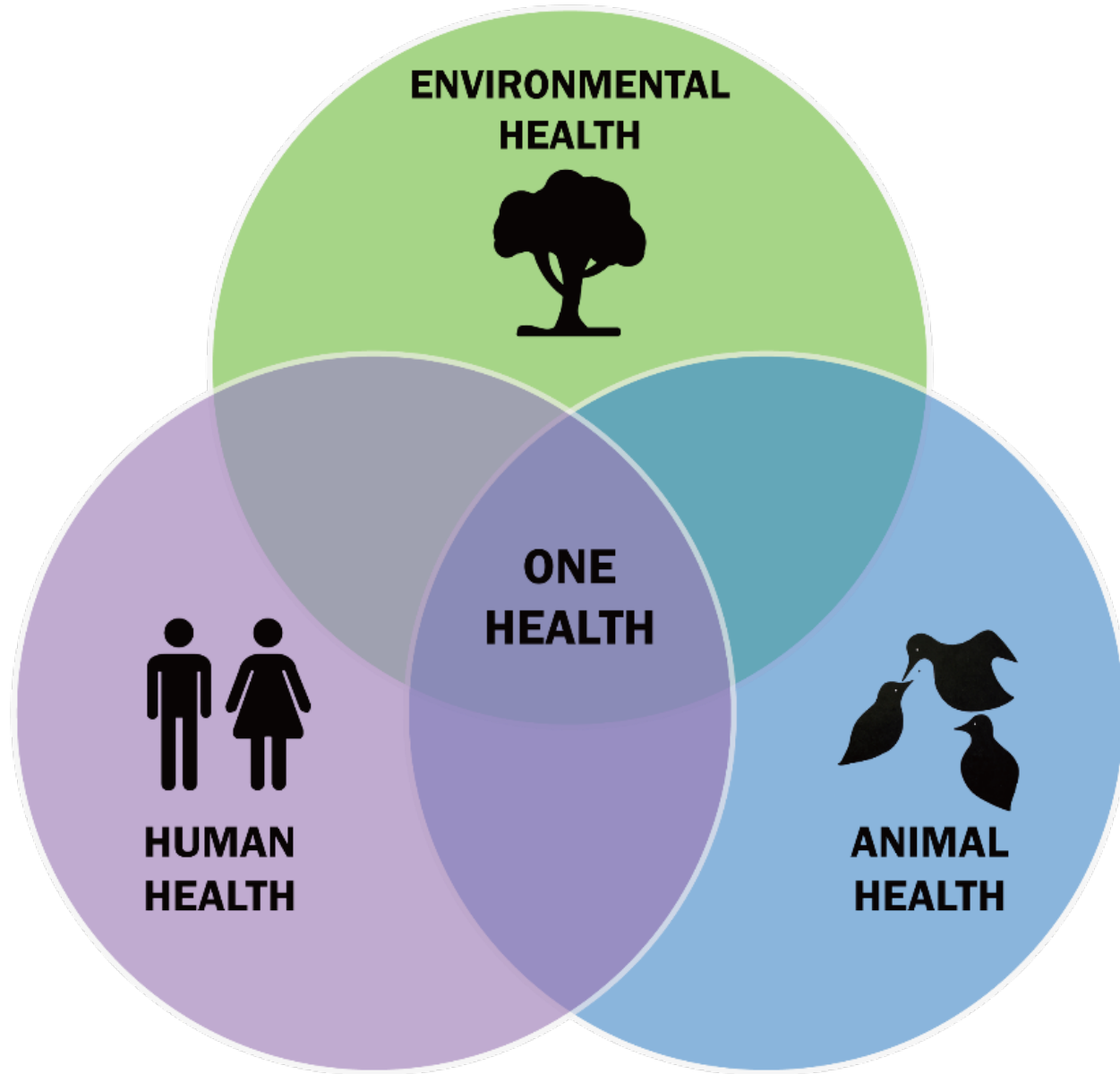


Secure Food Supply

Reportable Diseases

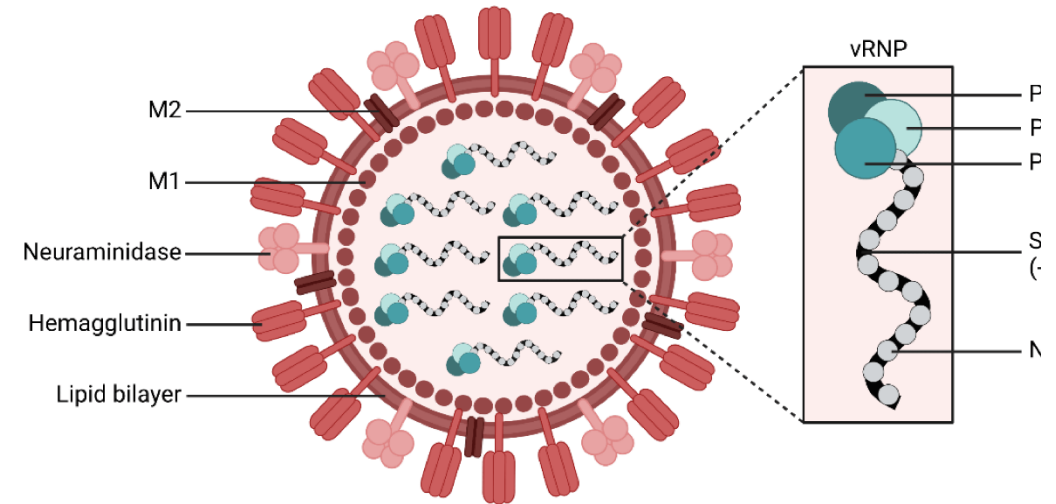
- Animal diseases or disease clusters with zoonotic potential
- New or emerging diseases never or rarely been observed in WA
- Diseases that appear in a new species or show evidence of higher pathogenicity than expected
- Unusually high morbidity or mortality
- Foreign Animal Diseases



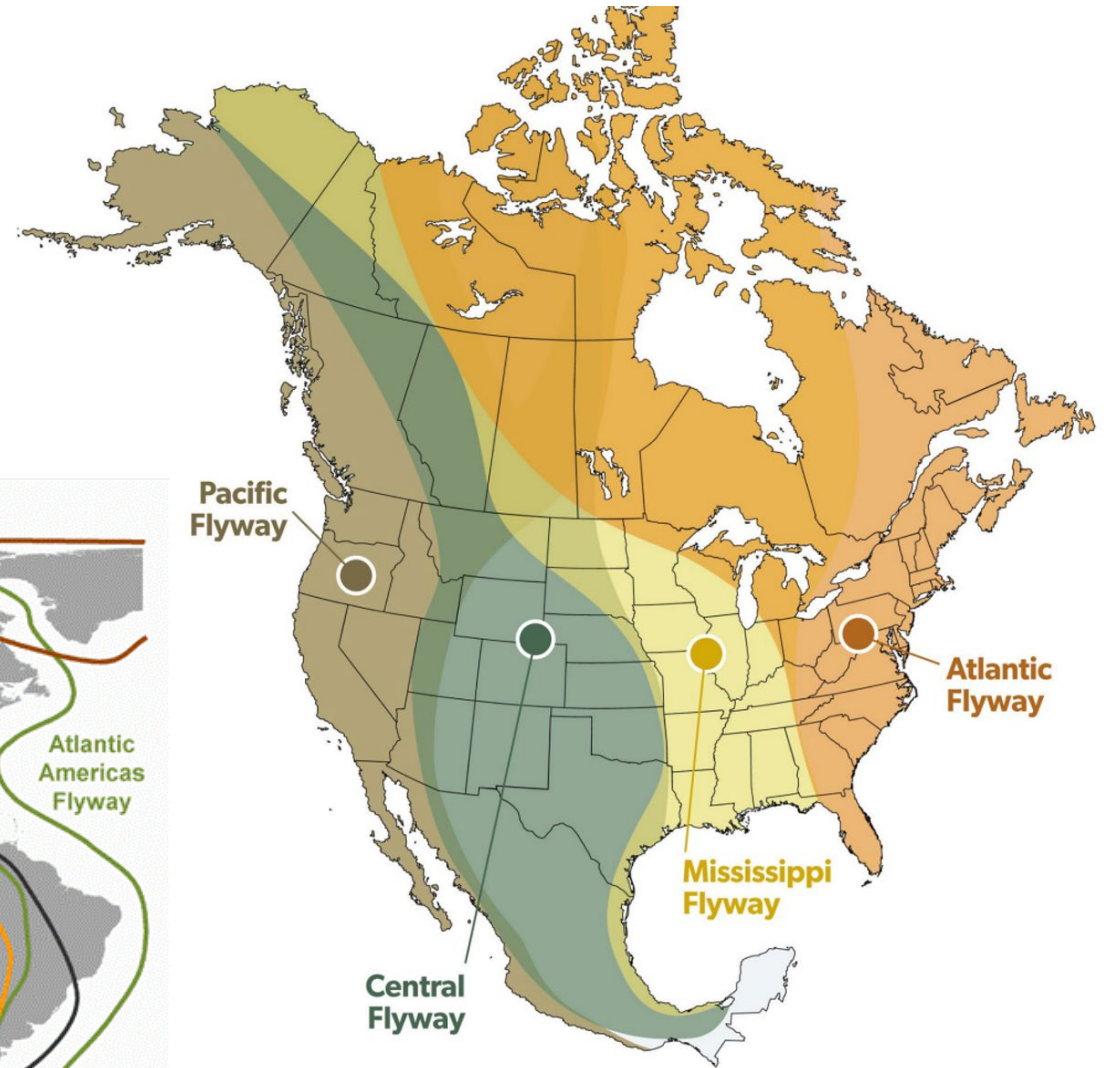
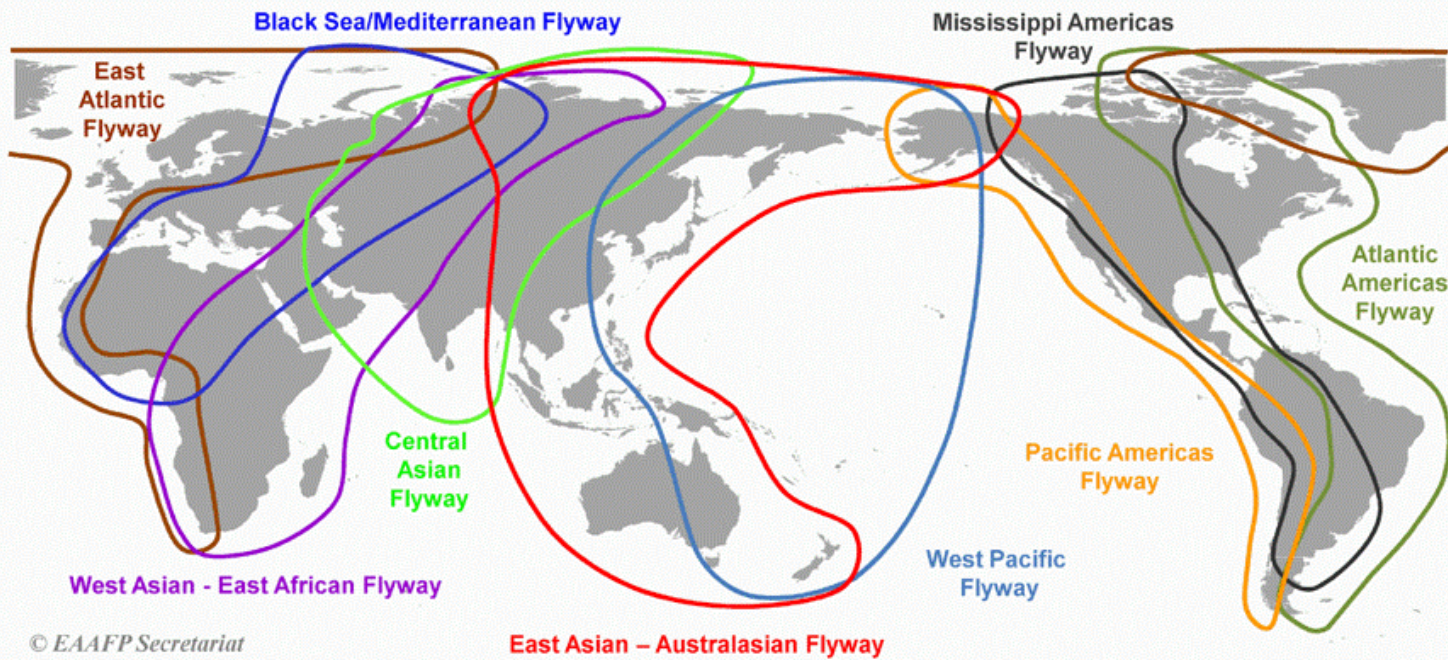


Avian Influenza Viruses

- Present in wild migratory waterfowl
- Strains that cause severe disease in poultry—highly pathogenic avian influenza (HPAI)
- Combinations of H and N determine **pathogenicity** and **zoonotic potential**
- H5 N1 clade 2.3.4.4b



Migratory Pathways

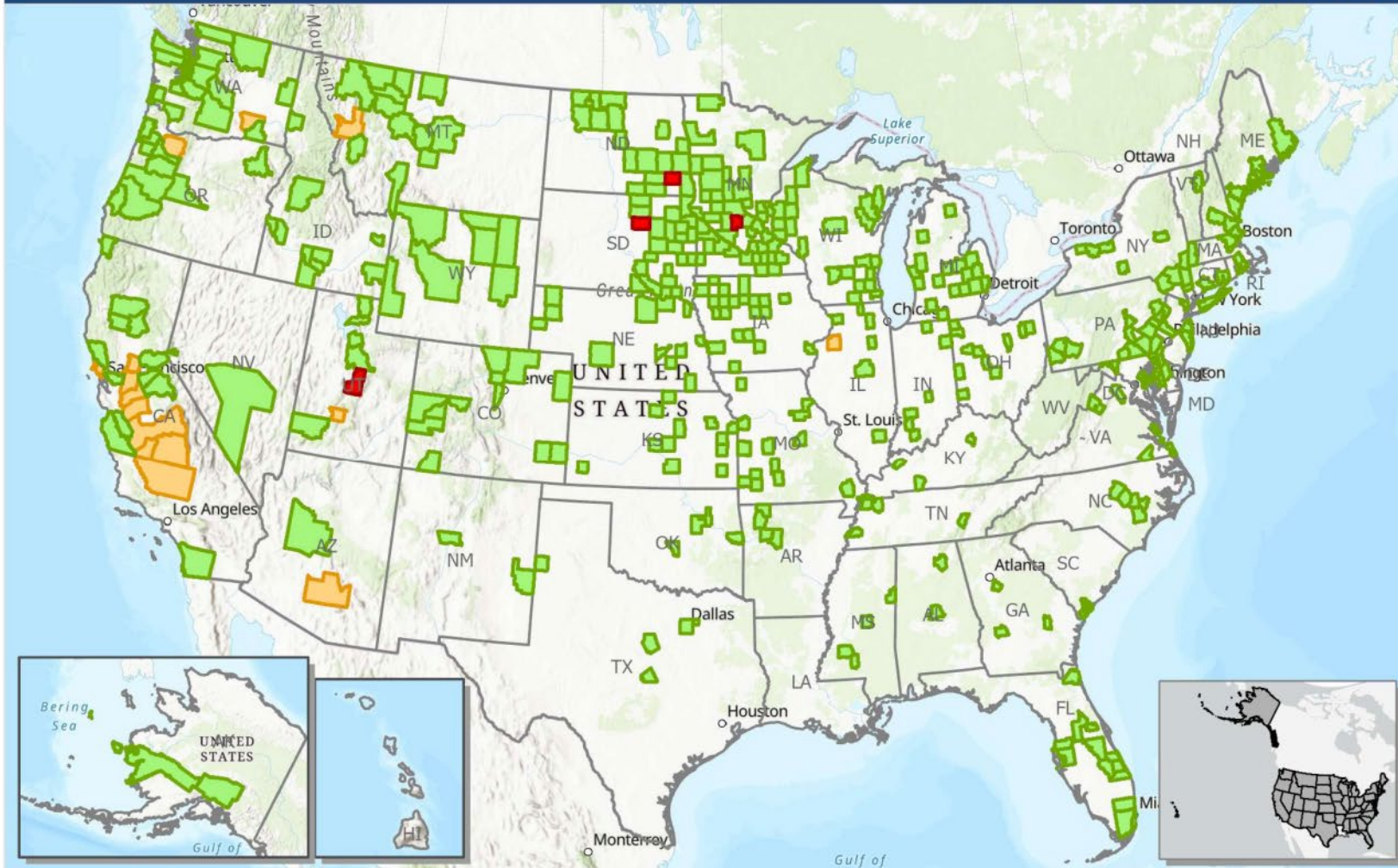


OVERVIEW OF THE NATIONAL SITUATION

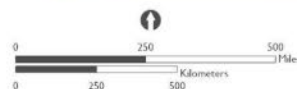


United States
Department of
Agriculture

HPAI in Domestic Poultry – Active Surveillance by County
As of: November 29, 2024 3:00 P.M. ET



- Active Control Areas/Surveillance Zones ≥ Nov 24, 2024
- Active Control Areas/Surveillance Zones < Nov 24, 2024
- All Control Areas/Surveillance Zones Released



Data Source:
APHIS, USDA EMRS
Spatial Reference:
North America Albers Equal Area Conic

USDA APHIS
2150 Centre Ave
Fort Collins, Co 80526

These data, and all the information contained therein, have been collected by the U.S. Department of Agriculture's Animal and Plant Health Inspection Service (APHIS), or by its cooperators on APHIS' behalf, for restricted government purposes only and is

49 Affected States

1248 Confirmed Premises

954 Control Areas/
Surveillance Zones Released

****Note:** This map displays domestic Control Areas and the status of each affected county. It is not reflective of the trade status of the counties.

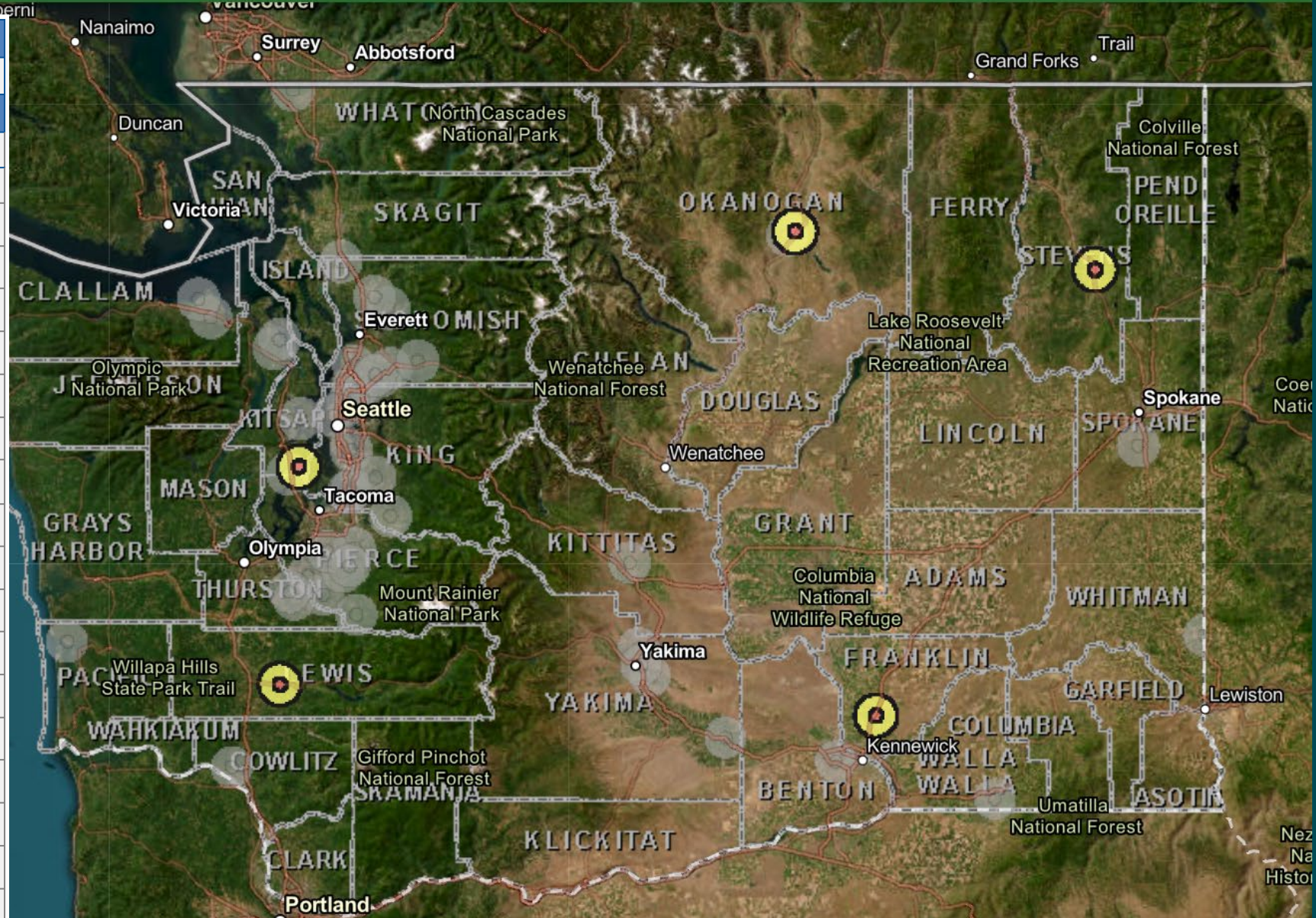
Surveillance Zones for non-poultry premises were in place prior to November 15th.



Washington State Avian Influenza Outbreak Map

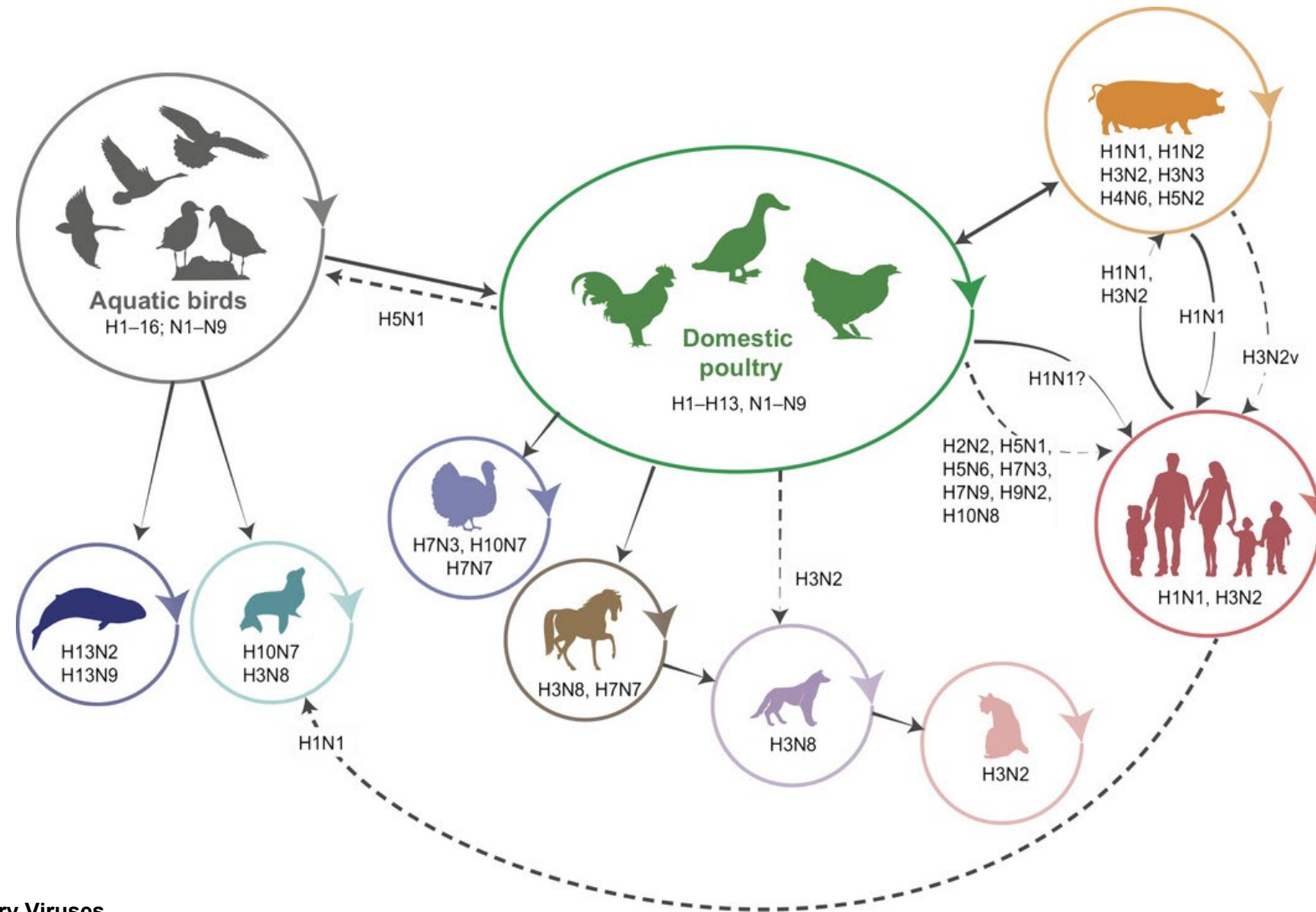
Washington State Department of Agriculture

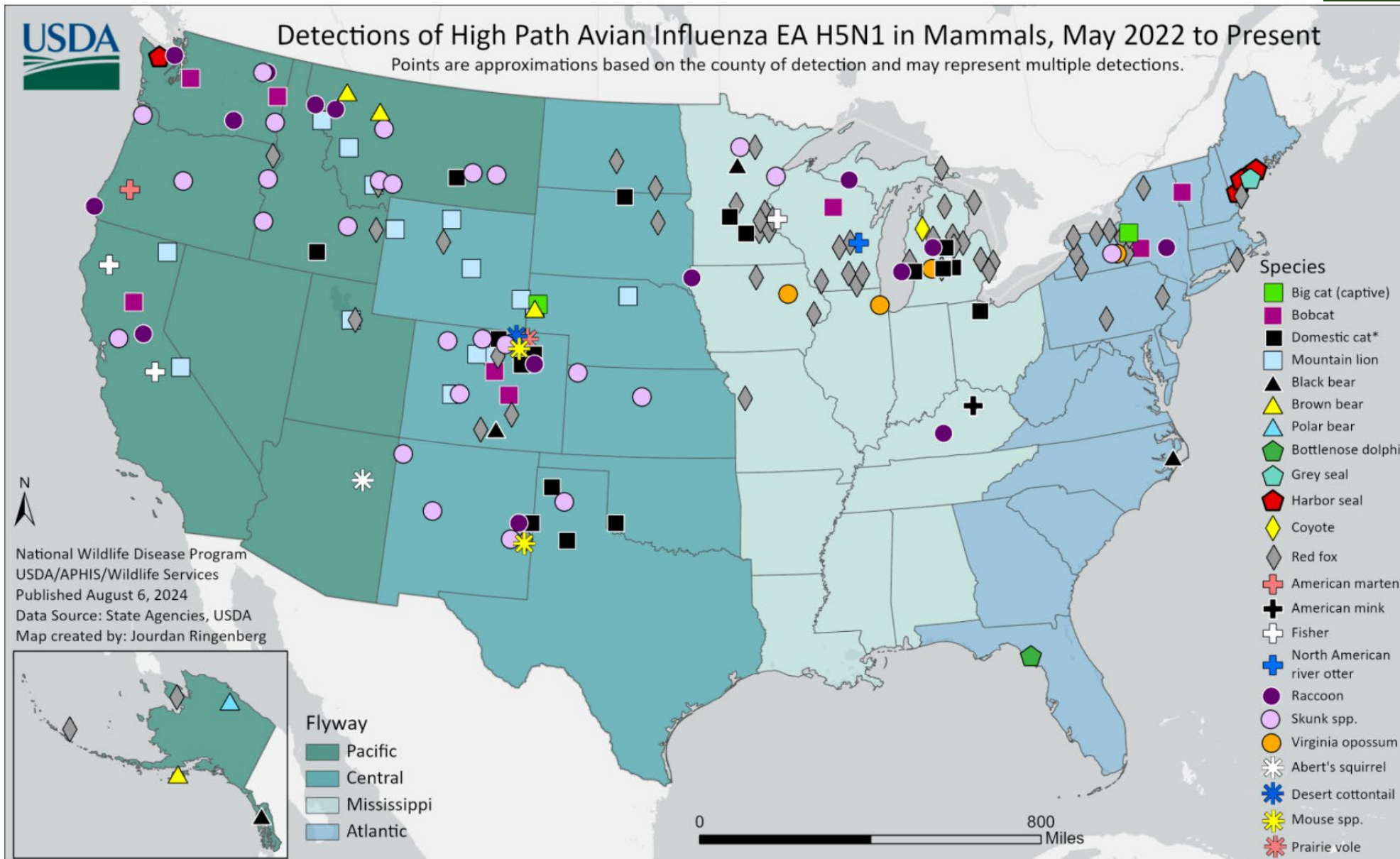
Cases in Washington	
52	
County	# Premises
Benton	1
Clallam	2
Cowlitz	1
Franklin	2
Jefferson	2
King	9
Kittitas	1
Kitsap	3
Lewis	1
Okanogan	1
Pacific	1
Pierce	7
Snohomish	10
Spokane	1
Stevens	1
Thurston	2
Walla Walla	1
Whatcom	1
Yakima	4



Ecology and Adaptive Evolution of Influenza A

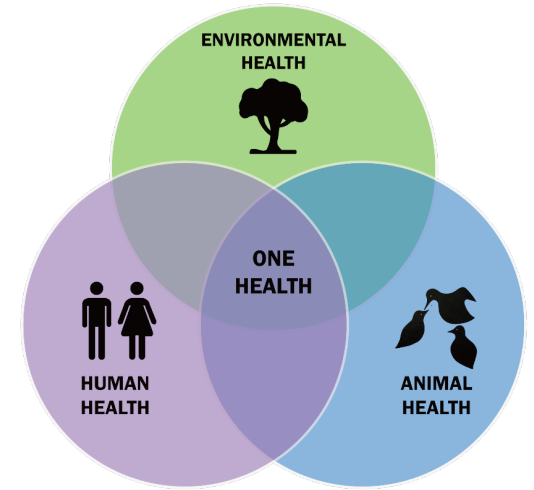
Interspecies Transmission





400 detections of clade 2.3.4.4b virus in 23 different mammals

ONE Health Surveillance Strategies to ERADICATE Bird Flu



USDA- VS

Federal Order- interstate movement
 USDA Voluntary status program
 Domestic animals on infected premises



FDA

Double blinded milk silo study
 Meat and Milk safety studies
 Pasteurization studies
 \$8 million



Wildlife Services

Feral swine (4,000)
 Deer (952)
 Wild Birds
 Wild mammals (300+)
 Hunter harvest
 2023- 43,624 samples per year- Mortality
 \$5 million additional surveillance



FSIS

Retail Ground Beef study
 Condemned Dairy Cows
 Carcass Sampling (800/yr)



HHS/ CDC

Wastewater
 Human monitoring
 PPE

College of Veterinary Medicine

Discovery. Detection. Prevention.

WADDL

Washington Animal Disease Diagnostic Laboratory

POULTRY



H5N1 clade 2.3.4.4b

Foreign Animal Disease

Serious Trade Impacts

High mortality

Depopulation

Massive Economic Impacts

Wild bird to poultry/ Cow to Poultry

DAIRY



H5N1clade 2.3.4.4 b3.13

Emerging Disease

Minimal trade impacts

Low morbidity (drop in milk, thick milk)

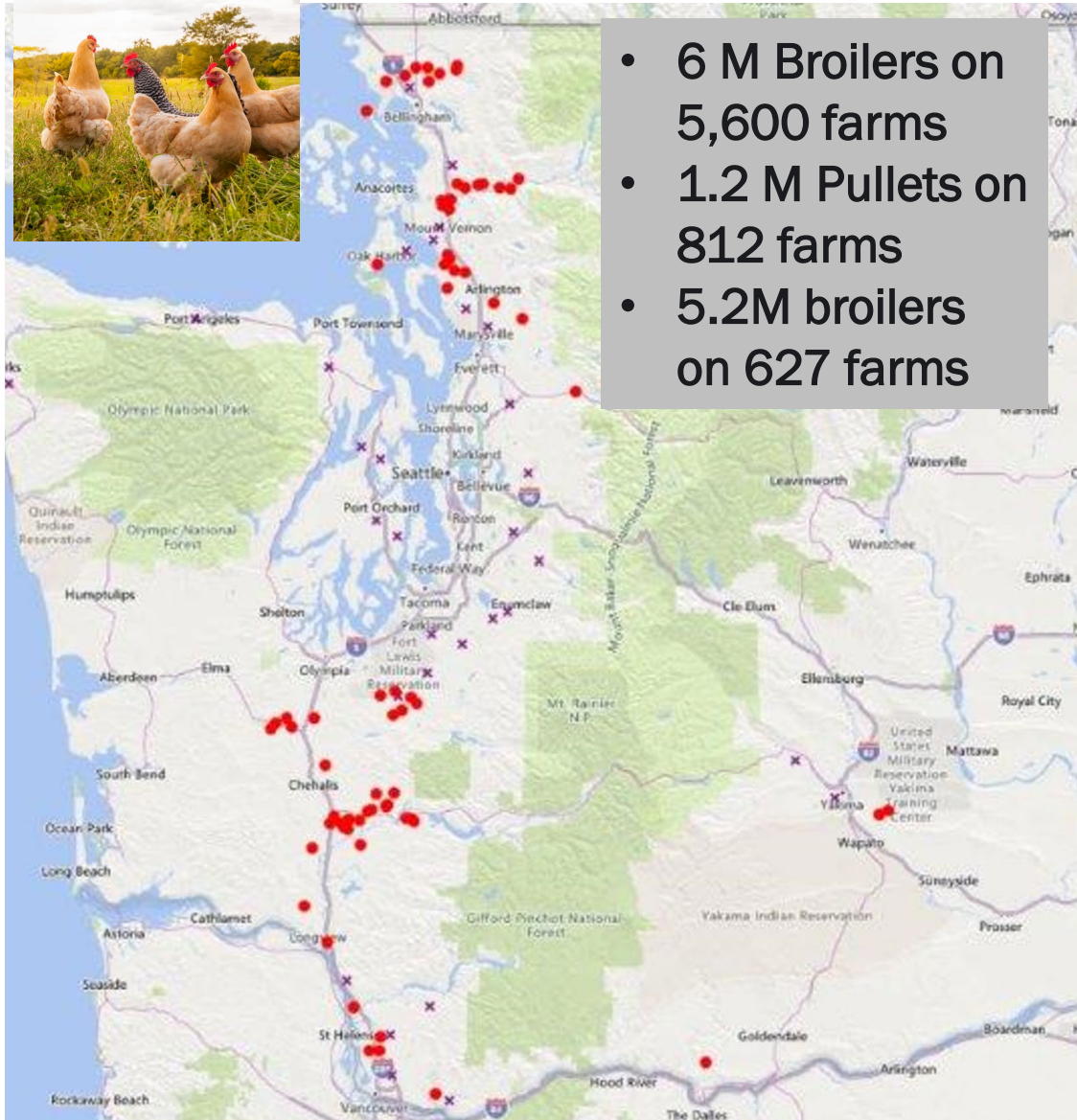
Recovery

Some economic impacts

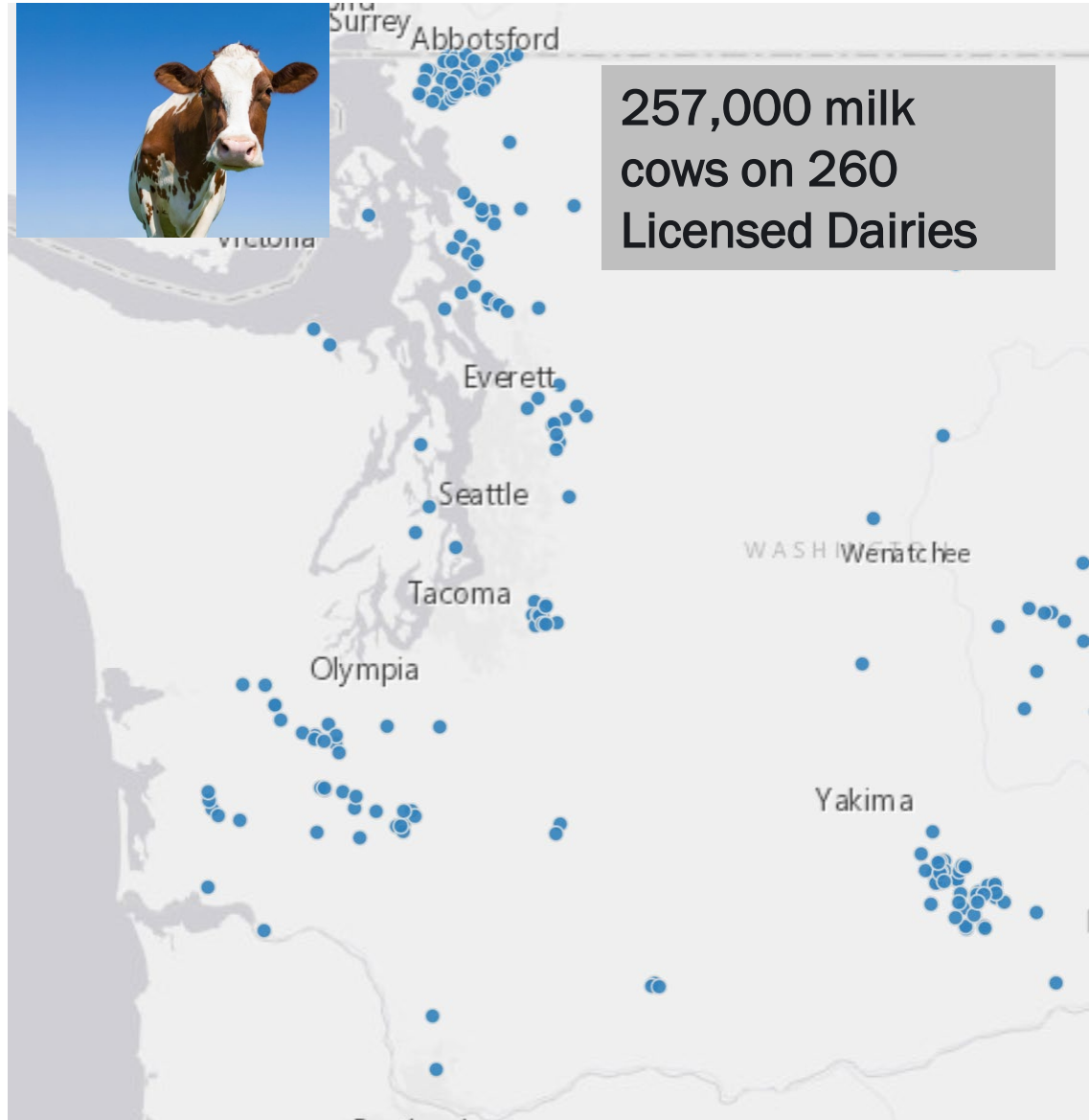
Lateral cow to cow



- 6 M Broilers on 5,600 farms
- 1.2 M Pullets on 812 farms
- 5.2M broilers on 627 farms



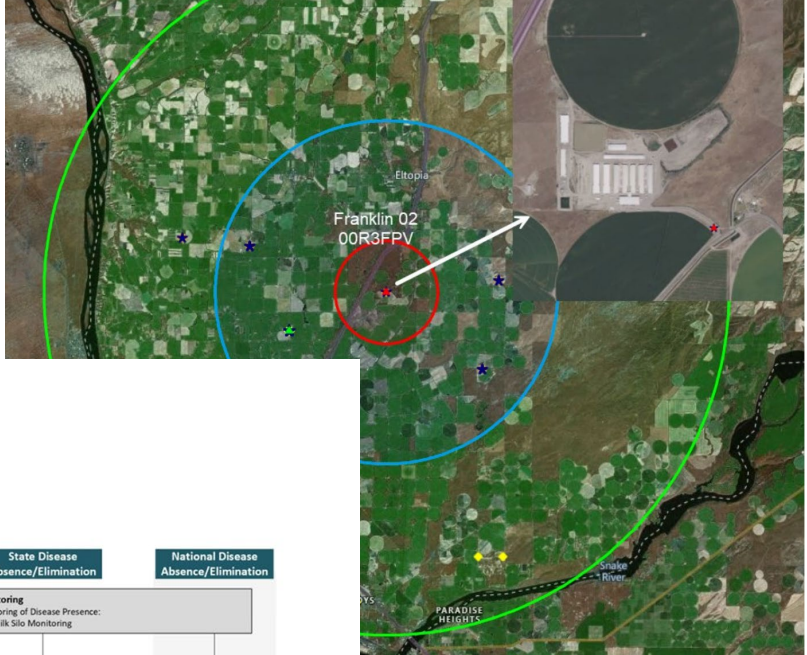
257,000 milk cows on 260 Licensed Dairies



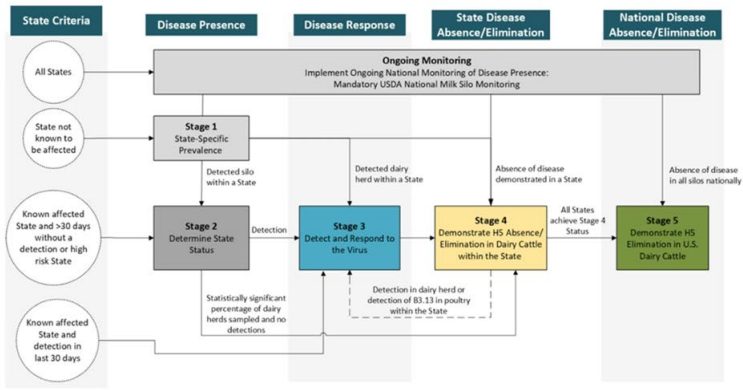
Bird Flu Suspected in Four Washington Farm Workers, CDC Sends Team

By Reuters | Oct. 21, 2024, at 12:59 p.m.

Save Comment    




November 2024 HPAI Eradication Program



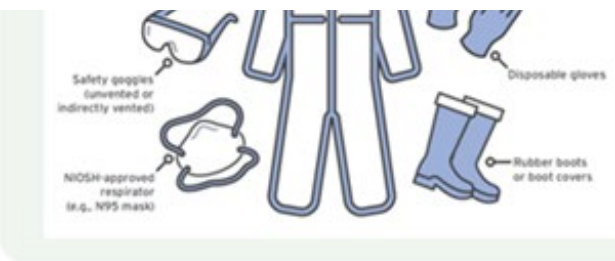
to contact
ments.

ives:

your hands
hout the day
fore eating,
g, or smoking.

milk and raw milk
products may contain
harmful bacteria or
viruses, including H5N1
virus, and consuming raw
milk is a risk for infection.
Pasteurization removes
these germs.





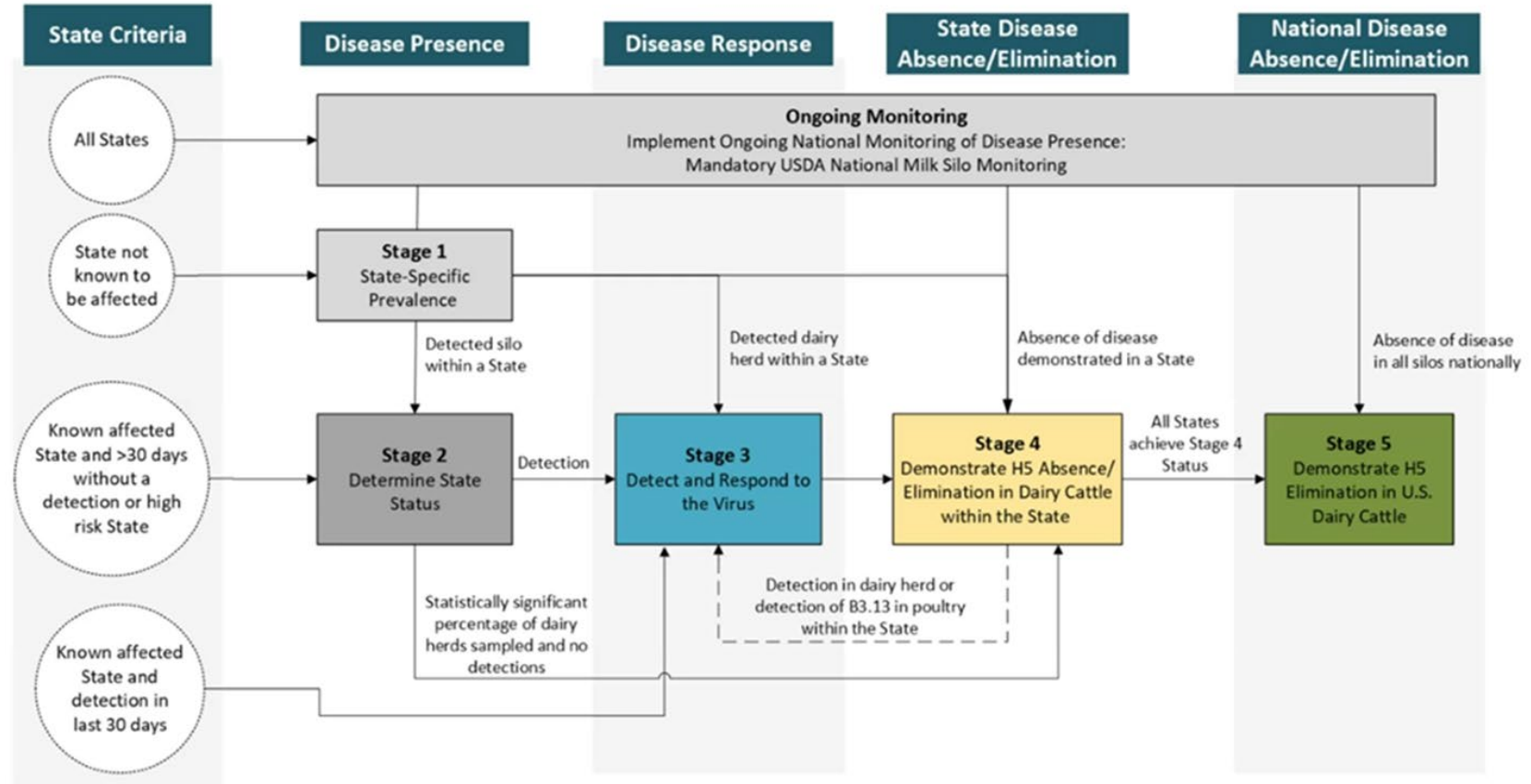
Symptoms of Avian Flu in humans can include:

- Headaches
- Eye redness, tearing.
- Trouble breathing
- Sneezing



Dec 2, 2024 Federal Order HPAI Eradication Program

600+ negative
dairy samples



Food Safety & Consumer Services Division

Serving consumers and stakeholders in the state of Washington by assuring the **availability, safety, and integrity** of the state's human and animal food supply.

Presented by: Luisa Castro, Food Safety & Consumer Services Division Assistant Director



Animal Feed Program



Food Assistance Program



Food Safety Program



Microbiology Lab



Organic Program



Produce Safety Program



Rapid Response Team

Meet the Programs Keeping Washingtonians Safe



Animal Feed Program

Ensuring the safety and integrity of commercial animal feed, including livestock & poultry feed, fish feed, pet and specialty pet food.



Food Assistance Program

Partnering with hunger relief organizations, tribes, and the agricultural community to alleviate hunger and increase client access to healthy and safe food.



Food Safety Program

Sampling, testing, licensing, labeling, and inspecting food processors, cottage food operators, food warehouses, dairy operations, CIE firms, custom meat operations.

Meet the Programs Keeping Washingtonians Safe



Microbiology Lab

Testing food and dairy products for microbial pathogens and contamination by insects, rodents or filth. Testing includes dairy products for quality and standards for the interstate shipment of milk.



Organic Program

Ensuring the integrity of the USDA organic certification label by providing access and technical assistance to the organic market and to farmers, handlers, and processors.



Produce Safety Program

Conducting inspections and providing support for the safe production of fruits and vegetables and reducing the public health risks for consumers of Washington produce.

...and the Rapid Response Team tracking it all

* Incident Reporting is based on Calendar Year (CY) per FDA

Response Notification	Active	Closed	*FDA Reports	*Total
8	14	5	34	43

F

Hazard Type	Count
<i>E.coli</i>	15
<i>Salmonella</i>	14
<i>Campylobacter</i>	5
<i>Listeria</i>	6
Adulterated	4
Allergen	2
Other	1

FDA Notification	*FSCS Lab Notification	*WSDA Recalls Supported	*WA DOH Notifications	*FINS Report
19	3	54	12	1

Current Incidents

- WARRT 24-42 - FDA - Cucumbers - Salmonella - Continuing Investigation
- WARRT 24-41 - FDA/DOH - Taco contents - E.coli - Continuing Investigation
- WARRT 24-38 - WSDA - Raw Milk Cheese - Aged Process - Sunnyfield Farms - Closed Nov 24
- WARRT 24-31 - FDA/CDC - Unknown - Salmonella Typhimurium - Continuing Investigation
- WARRT 24-28 - FDA - Walnuts - E.coli - Unknown - Continuing Investigation
- WARRT 24-27 - FDA - Onions - Salmonella Thompson - Continuing Investigation
- WARRT 24-25 - FDA - Carrots - E.coli - Gimmway Farms - Continuing Investigation
- WARRT 24-24 - FDA - Onions - E.coli - McDonald's - Continuing Investigation
- WARRT 24-23 - FDA/DOH - Sprouts - E.coli - Continuing Investigation
- WARRT 24-14 - FDA - Diamond Shroomz - Closed Nov 24



39

INSPECTIONS

120

SAMPLES

420

LAB TESTS

Completed
each week



840

COMPLIANCE
ACTIONS

8

STOP SALE ACTIONS

1/\$1000

CIVIL PENALTY
ACTIONS

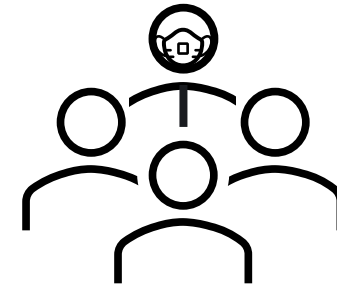
Compliance
Actions



48

PRODUCT
RECALLS
OR
PUBLIC HEALTH
NOTICES

By November
2024



43

INSPECTORS

10

LAB STAFF

Food Safety
and Consumer
Services field
and lab staff



-\$1,489,829

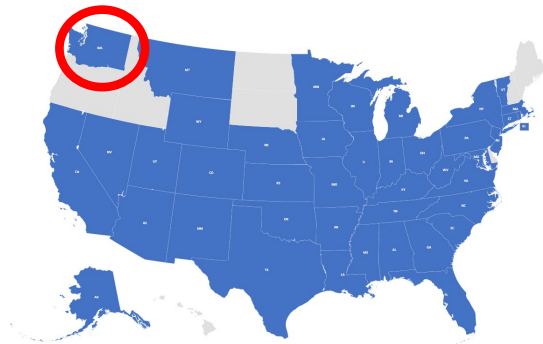
LESS IN
FEDERAL
FUNDING

Food Safety
and Consumer
Services
programs in
the last
five years

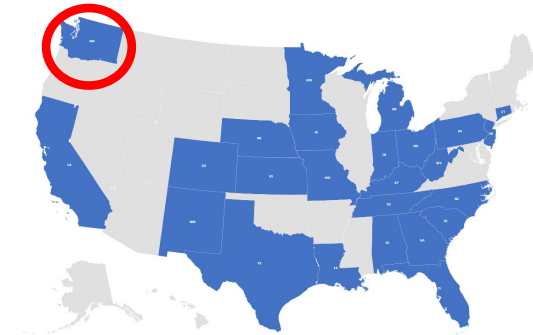
FS&CS Division Participation in FDA's Integrated Food Safety System



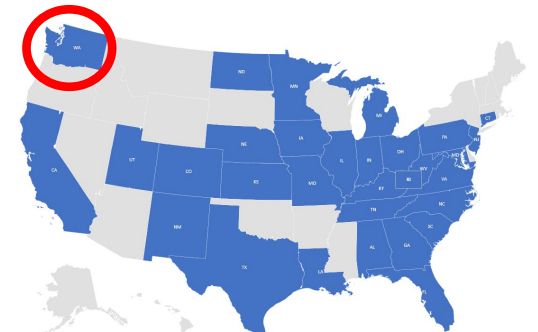
Food Safety - MFRPS



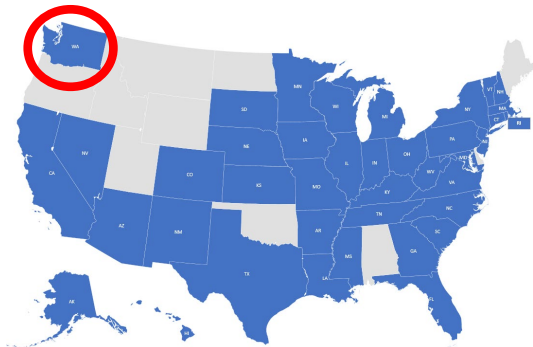
Food Safety - FDA Contract



Animal Feed - AFRPS



Animal Feed - FDA Contract



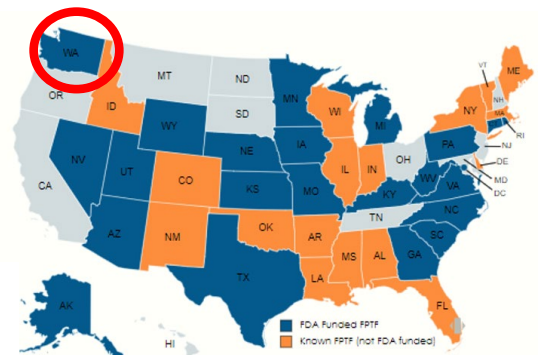
Micro Lab - FFM



Produce Safety - FDA



Rapid Response Team



Food Protection Task Force

Natural Resources and Agricultural Sciences Program

Science-based programming for
agricultural viability in Washington.

*Presented by: Dani Gelardi, PhD
Senior Soil Scientist | Climate Coordinator*



5
Examples

Counties



Department of Agriculture monitors surface water for the presence of pesticides during the pesticide use season (March to October).

pesticide assessment criteria, which

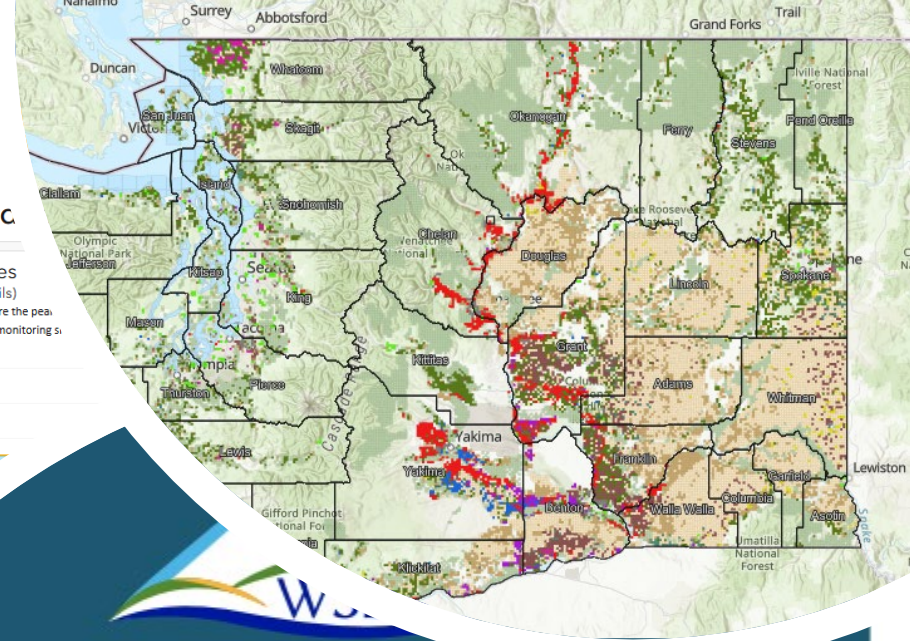
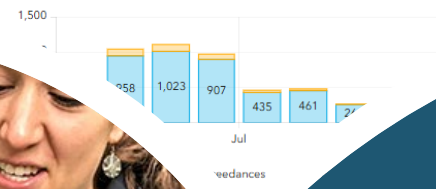
4,928
Total Detections

(Detections and Exceedances)

38
Exceedances

Detections and Exceedances
(Hover cursor over bars for more details)

Monitoring sites have different sampling schedules designed to capture the peak pesticide use. This tab should only be used when looking at a single monitoring site.



2015 and Agriculture

A Study by the Washington State Department of Agriculture

Estimated Nitrogen Available for Transport in the Lower Yakima Valley Groundwater Management Area

A Study by the Washington State Department of Agriculture and Yakima County

WSDA authors:
Gary Bahr, Perry Beale, Margaret Drennan, Jaclyn Hancock, and Kelly McClain

Climate Resilience

WSDA has been engaged in climate work for 100+ years, even when it wasn't called climate work.



Stakeholder Engagement:

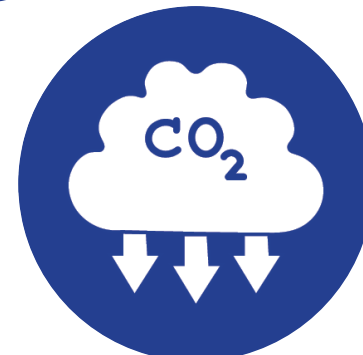
How is climate change affecting you, and how can WSDA help?

- 400+ producers described current impacts and needs for the future.
- *"Farmers are on the frontlines of the climate crisis and we're being asked to bear the brunt of investment while prices stagnate, and inflation makes the cost of production almost impossible to make a living!"*



A Review of the Climate and Agriculture Science

- Temperature and water supply projections are increasingly accurate, though many knowledge gaps remain.



Climate change presents new and increased risks to an already volatile sector.

- Water supply
- Water quality
- Extreme weather
- Pests, weeds, and disease
- Workforce health impacts
- Ocean acidification
- Changing crop suitability
- Volatility in transportation and utility infrastructure
- Regulatory costs and market pressures



Washington is positioned to be a global leader in supporting agricultural viability and vitality through these challenges.

- Geographic advantages
- State funding sources
- Diverse crop production
- Strong partnerships
- Track record of science-based programming



WSDA's Climate Resilience Plan for Washington Agriculture

- Defines 6 goals and 25 actions that WSDA commits to leading, convening, or supporting.
- To be released spring 2025
- In the meantime, read about agricultural resilience in Ecology's statewide plan, and see WSDA's associated decision packages.





Questions

Contact Us



Evan Sheffels – Policy Advisor

ESheffels@agr.wa.gov | 360-742-8157



Laura Butler – Legislative Liaison

LButler@agr.wa.gov | 360-810-0320



agr.wa.gov

