

---

# Child Care Access and Affordability

---

*House Appropriations  
Monday December 9*

Allison Krutsinger  
*Director of Public Affairs*  
Nicole Rose  
*Assistant Secretary Early Learning*



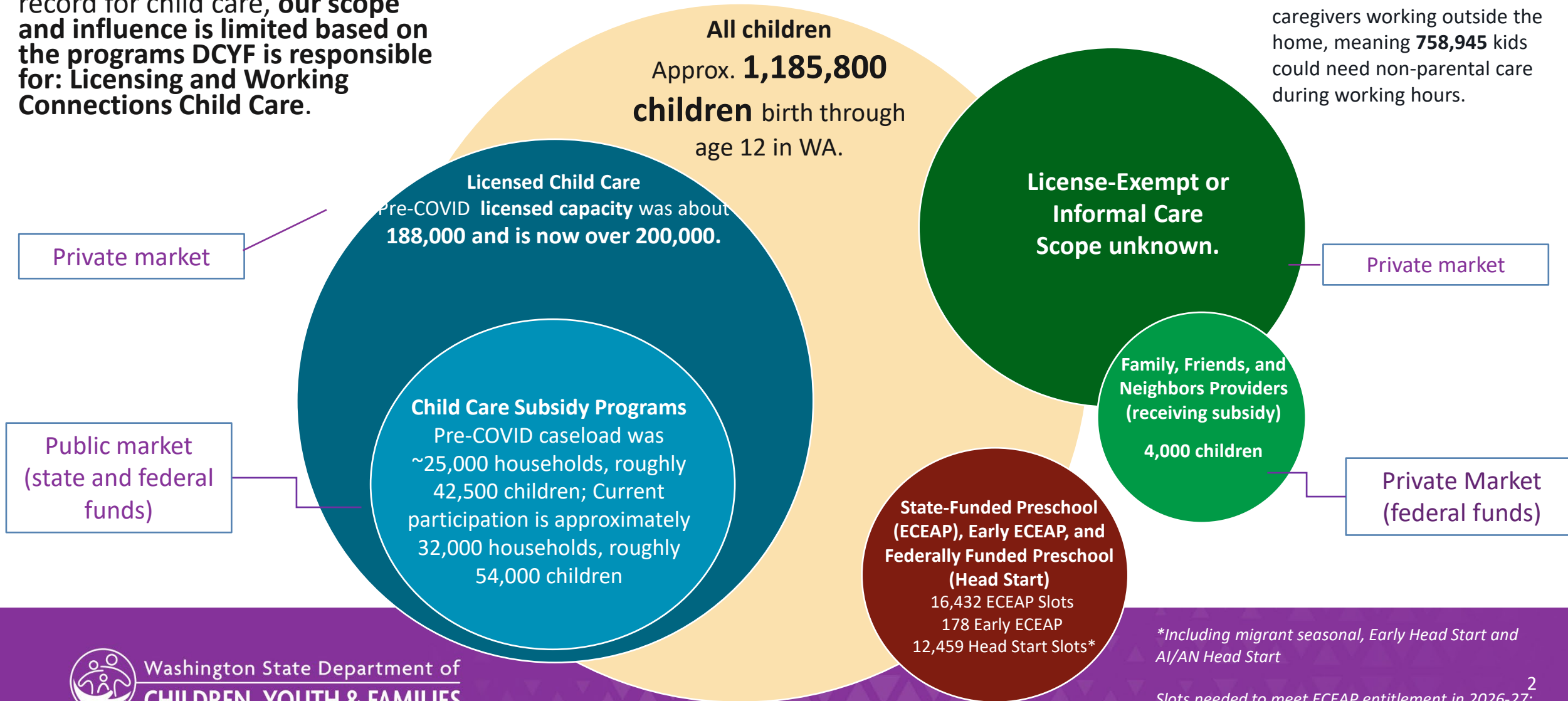
Washington State Department of  
**CHILDREN, YOUTH & FAMILIES**



# Universe of Early Care and Education in WA and DCYF's Role

While DCYF is the state agency of record for child care, **our scope and influence is limited based on the programs DCYF is responsible for: Licensing and Working Connections Child Care.**

It is estimated that 64% of children under 12 have all caregivers working outside the home, meaning **758,945** kids could need non-parental care during working hours.



\*Including migrant seasonal, Early Head Start and AI/AN Head Start



## Access to high-quality early care and education means

- ✓ Children will arrive at Kindergarten ready to learn
- ✓ Parents and guardians can participate in the workforce
- ✓ The Washington State economy is stronger

### Access is driven by the availability and affordability of care

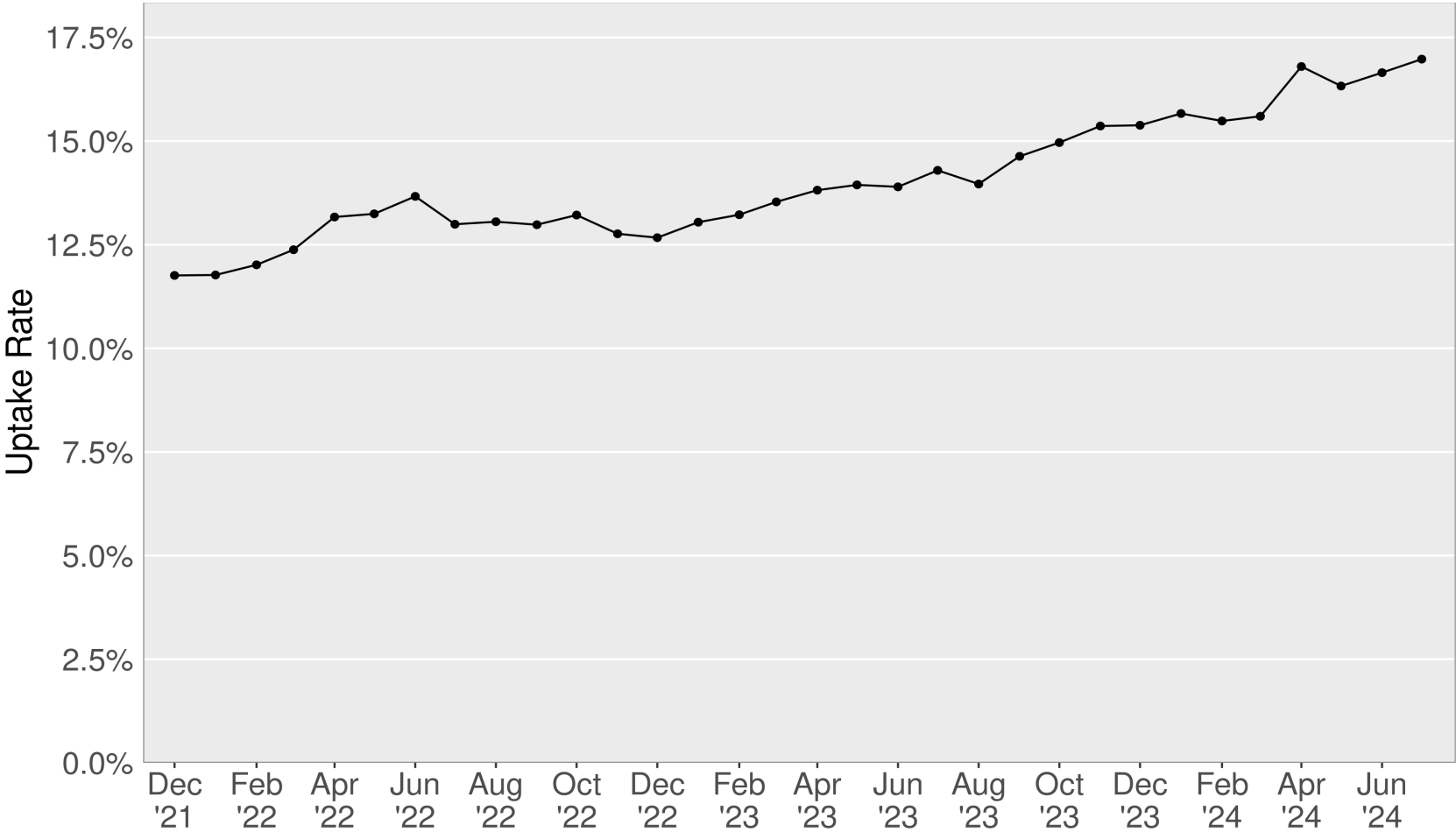
Increasing access means **more families are eligible** and the **rate paid for care is sufficient** for the costs of quality.

## Fair Start for Kids Act (2021)

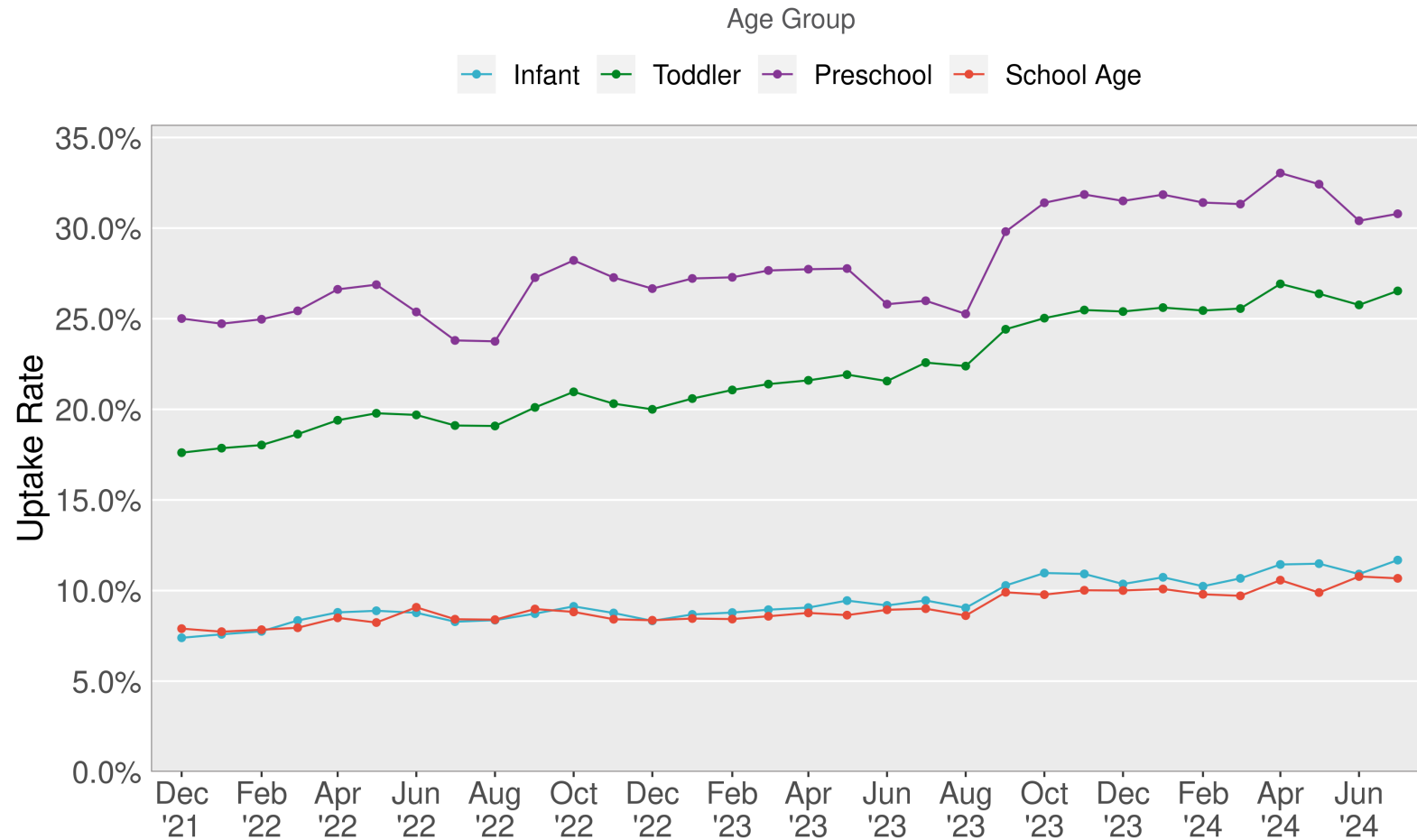
- ↑ Eligibility
- ↑ Rates
- ✓ **Access is increasing**



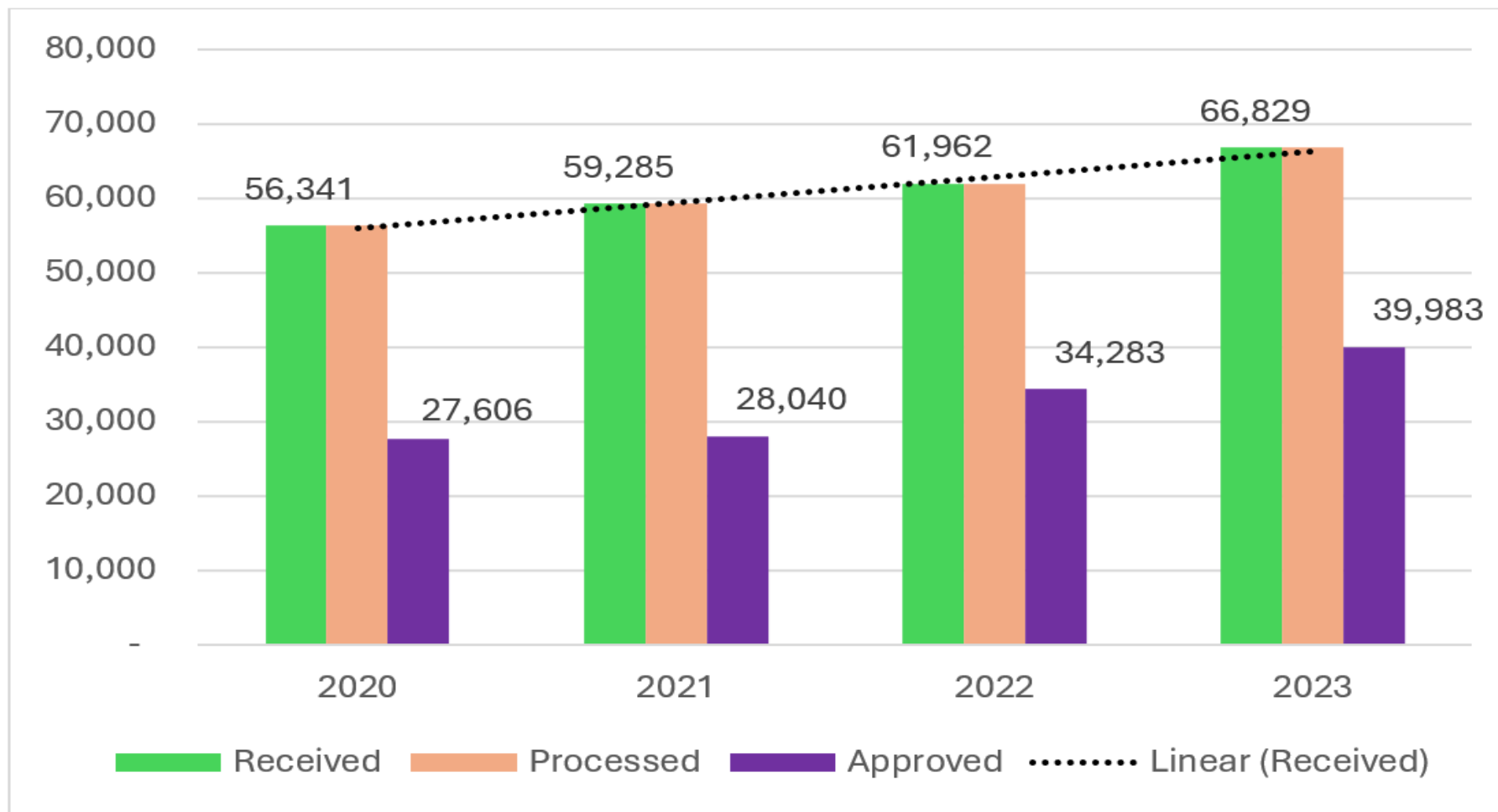
# State-wide Subsidy Utilization



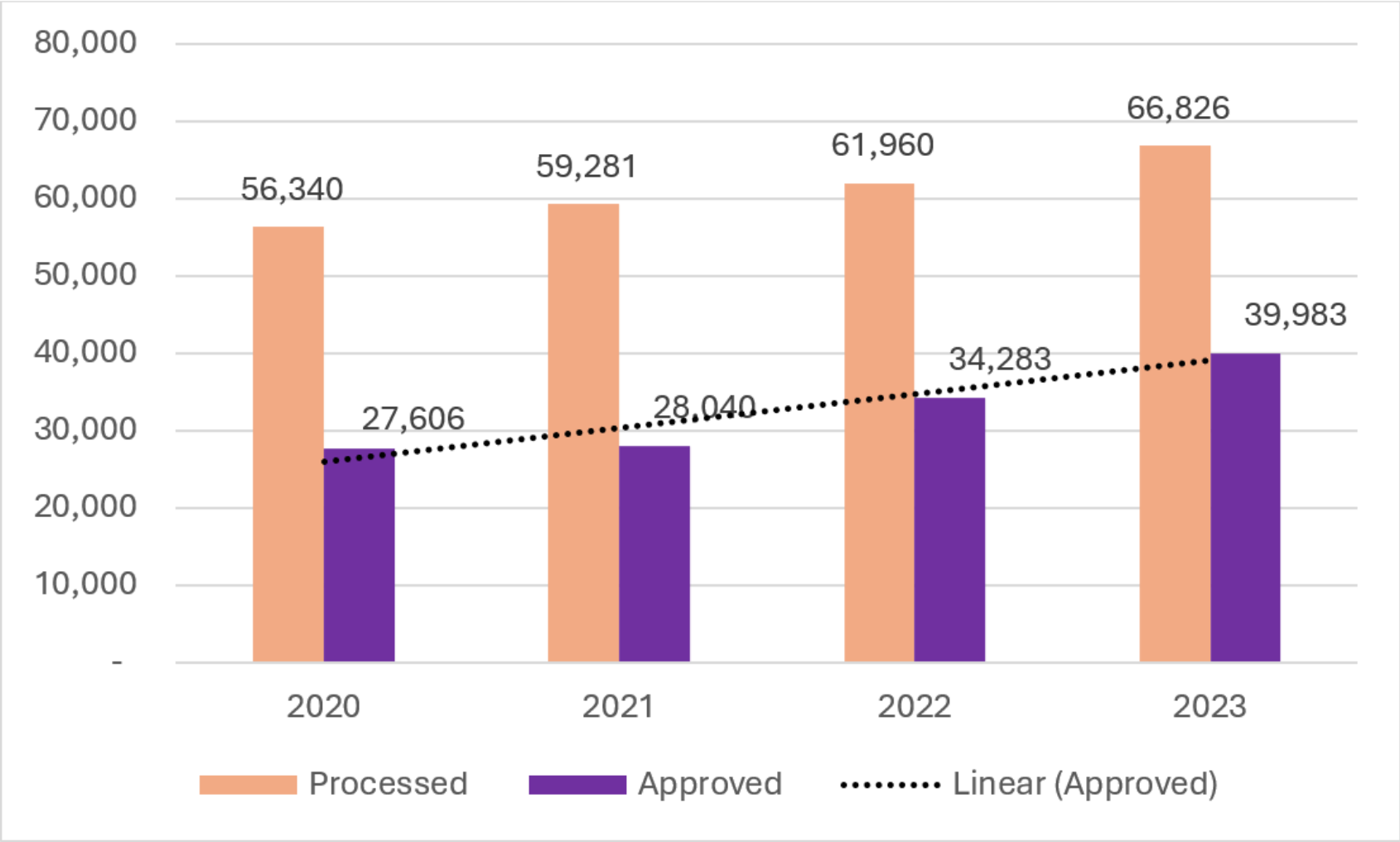
# State-wide Subsidy Utilization By Age Group



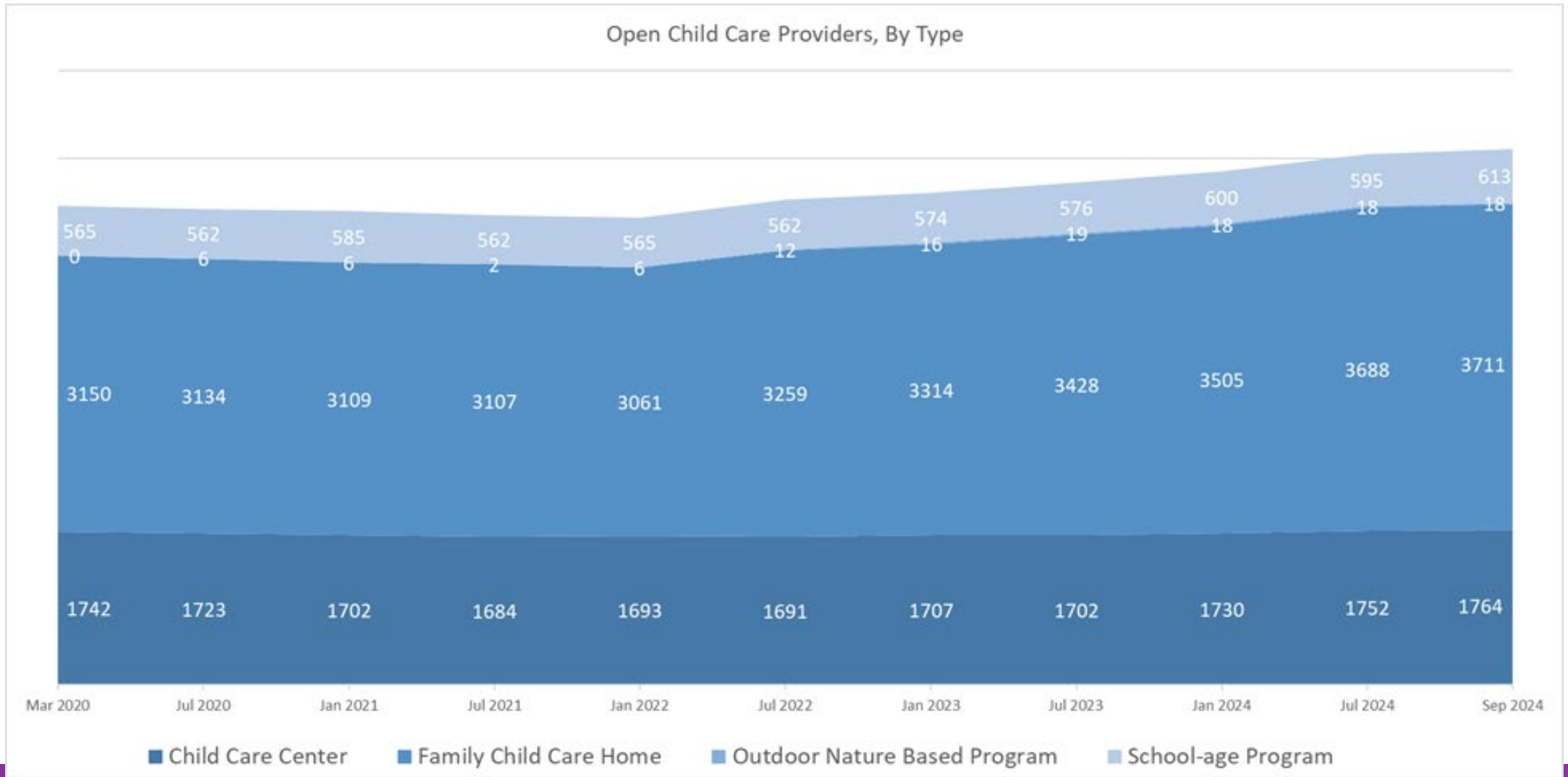
# WCCC Application Received



# WCCC Application Approved

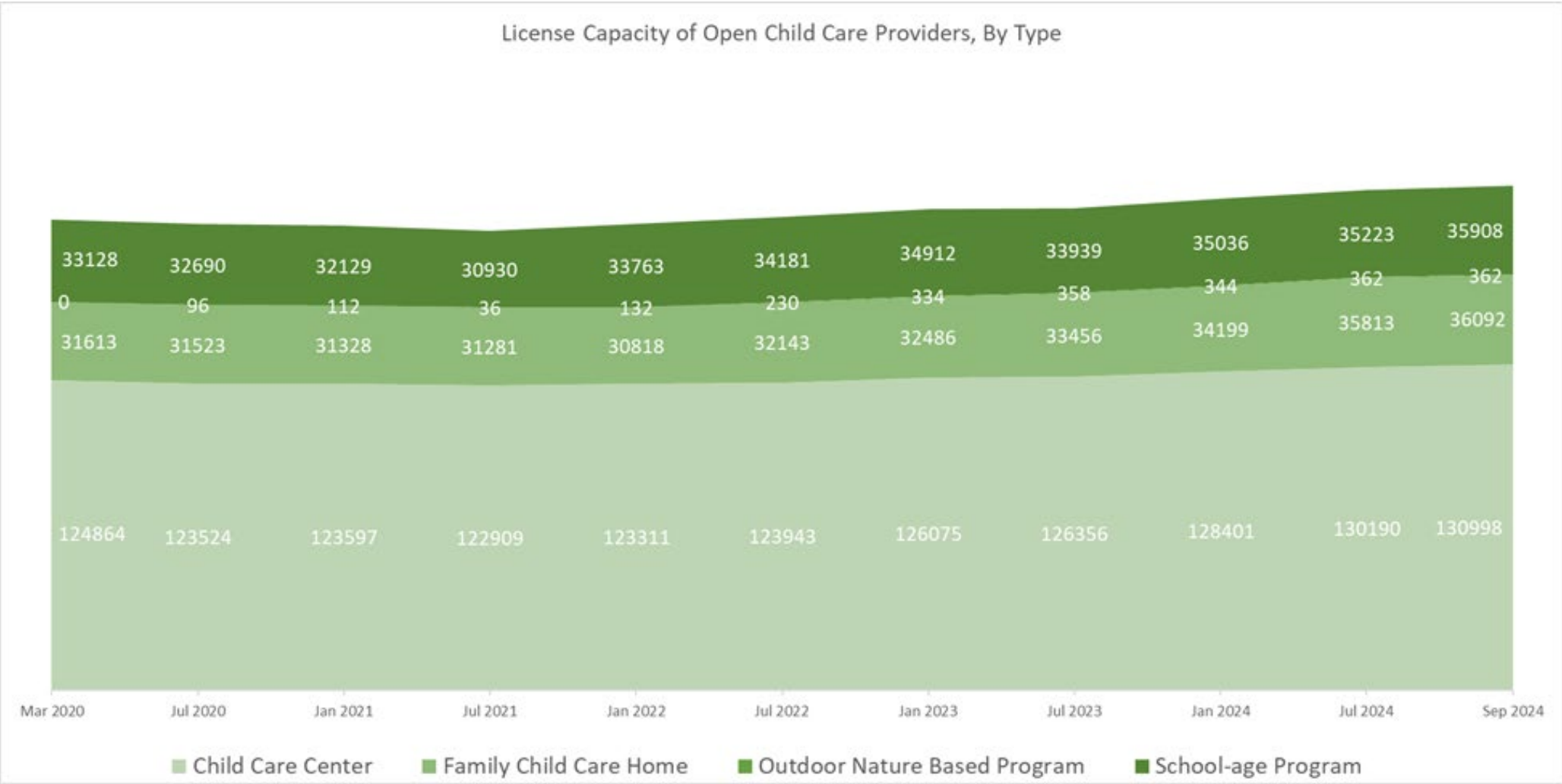


# State-wide Licensed Providers





# State-wide Licensed Capacity



# Keeping the momentum for increasing access

Future mandates for continued increase access

↑ Family Access Eligibility Expansion to 75 percent SMI **adding about 9,500 more families**

↑ Child Care Subsidy Rate increases to an **average increase of 27%**

Child Care Development Fund (CCDF) Federal Compliance – New requirements for states

- Enrollment based pay and prospective provider subsidy payment
- ECE services through grants and contracts for underserved geographic areas, infants and toddlers, and children with disabilities
- 12-month eligibility – children added during eligibility period





Questions?

