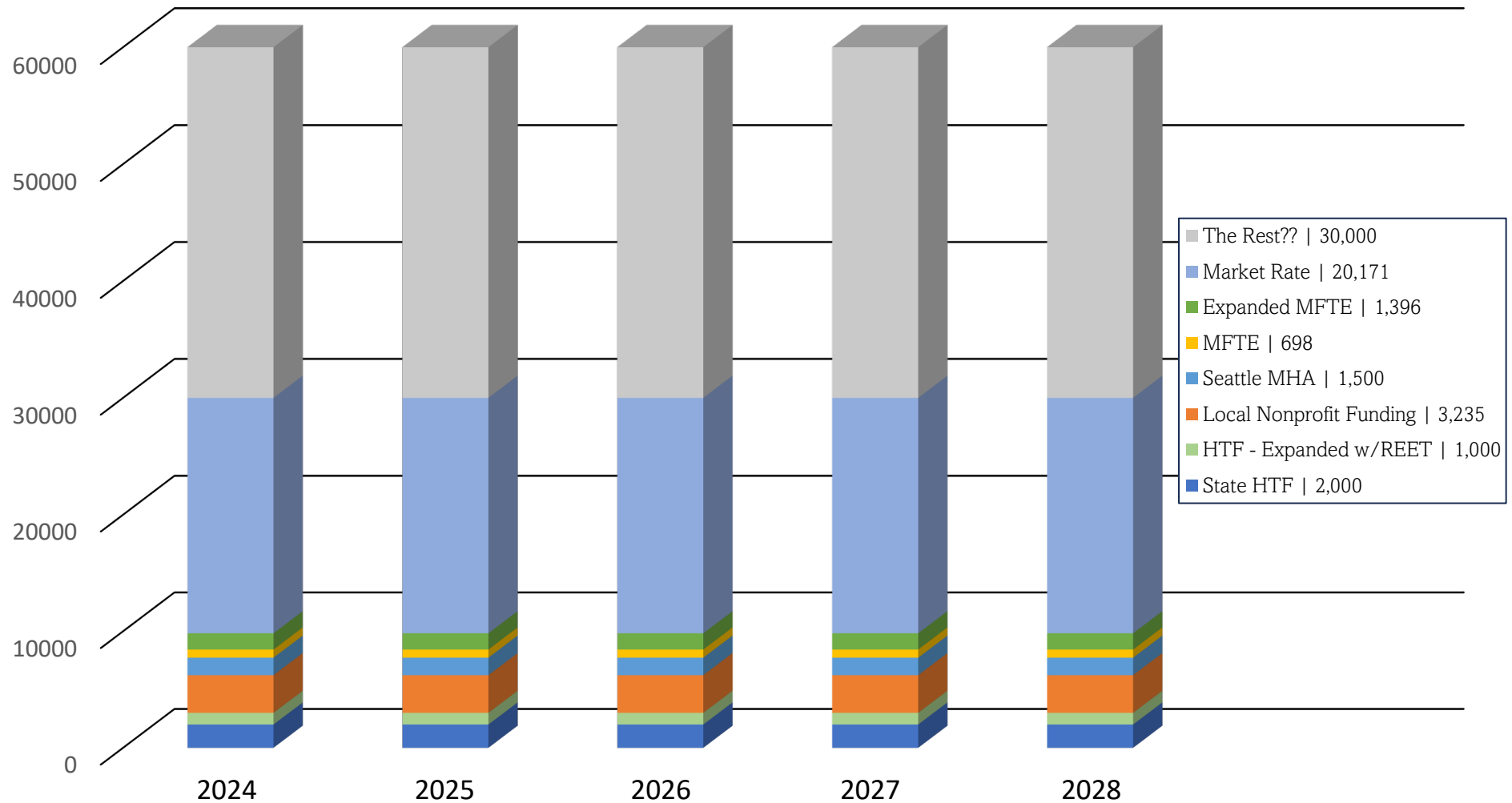
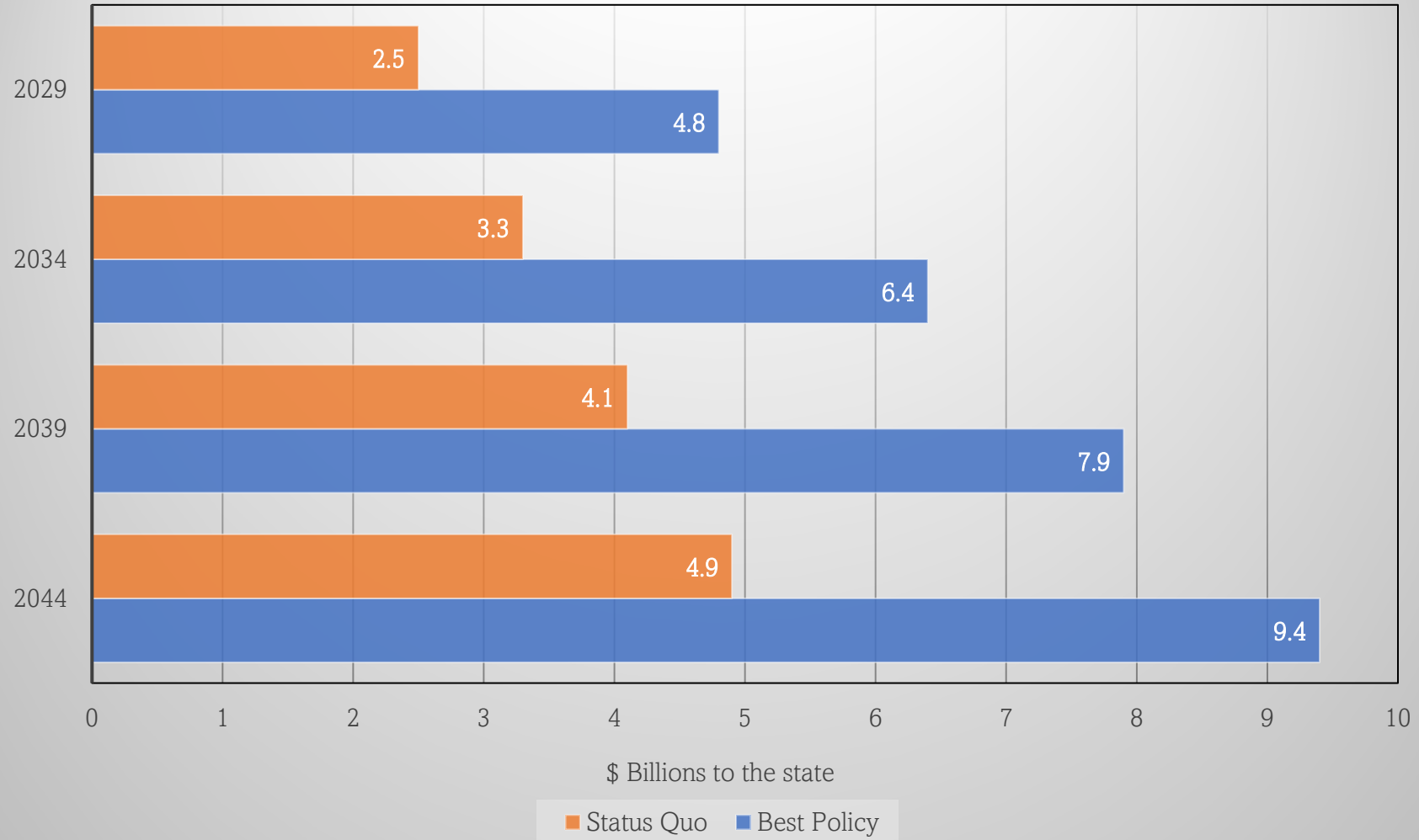


# Who will build the 60,000 homes a year that we need?



## State Income through Housing Production



# The Lost Year(s)



## Seattle Area Multifamily Construction - 2023

### Expectation:

87 projects, 21,000 units

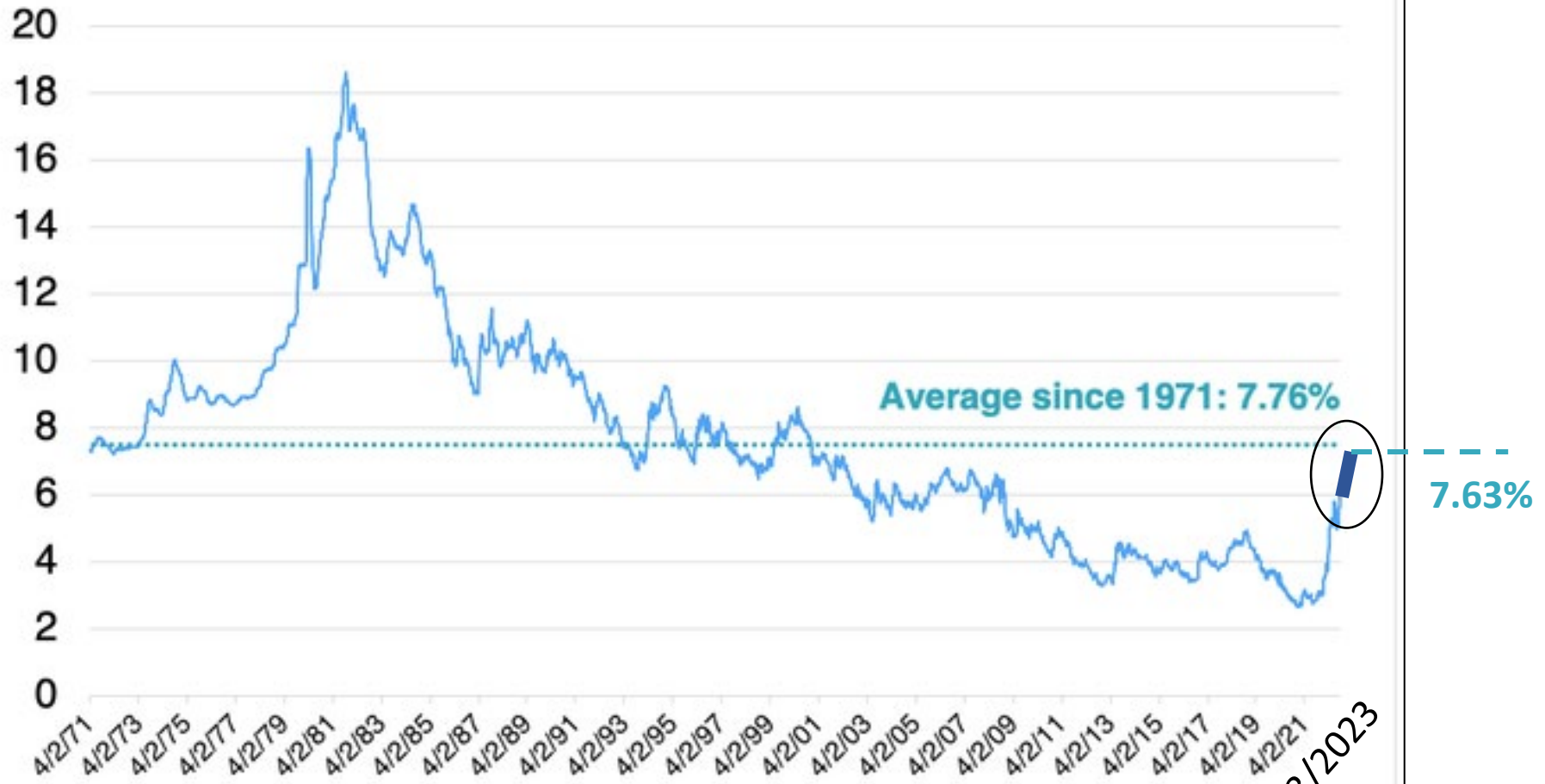
### Reality:

9 projects, 2,400 units.

**Delayed (2024 or later):** 62 projects,  
14,300 units.

**Paused indefinitely or terminated:**  
16 projects, 4,600 units.

# Historical 30-Year Mortgage Rates: 1971-2022



Historical Data: Freddie Mac PMMS. (c) TheMortgageReports.com

10/23/2023





# MFTE

A critical component for more homes now and into the future.