

# House Children, Youth & Families Committee Work Session

## **Inclusive Transitional Kindergarten (ITK) Grants**

**Dr. Jon Ram Mishra**, Assistant Superintendent of Elementary Education, Early Learning, Special Programs, and Federal Accountability, OSPI

**Samantha Bowen**, Executive Director of Early Learning, OSPI

**Ryan Guzman**, Early Childhood Special Education/Sec. 619 Coordinator, OSPI

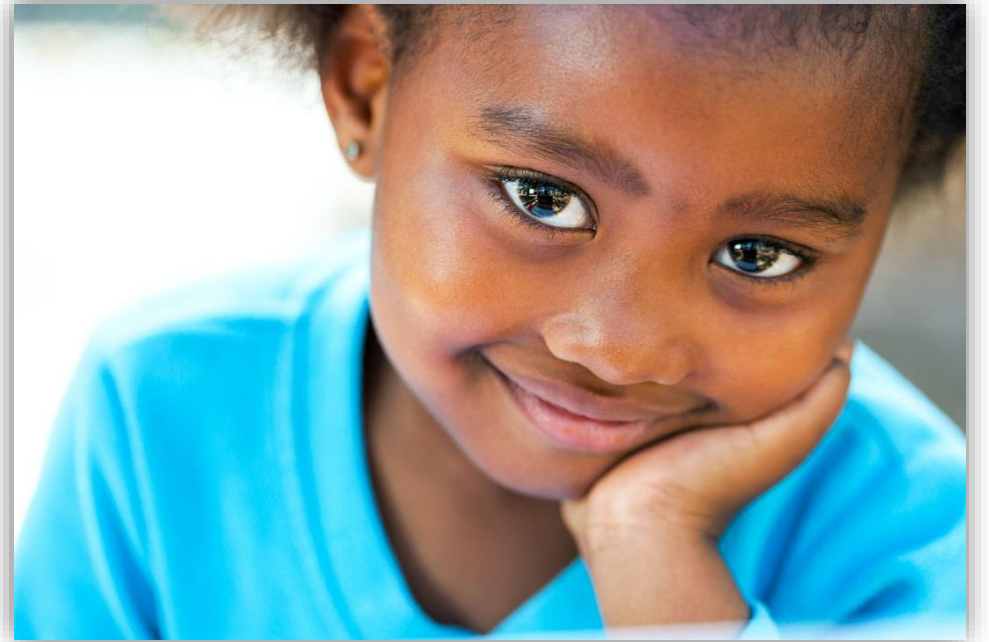


Washington Office of Superintendent of  
**PUBLIC INSTRUCTION**

**October 11, 2022**

# Transitional Kindergarten

- TK is a kindergarten program for children, below the age of five, who do not have access to high-quality early learning experiences prior to kindergarten. Additionally, they have been deemed by a school district, through a screening process and/or other instrument(s), to be in need of additional preparation to be successful in kindergarten the following year.
- Early entrance to kindergarten ([WAC 392-335-025](#))



# Inclusive Transitional Kindergarten (ITK)

- Funded by the Elementary and Secondary School Emergency Relief (ESSER) Fund
- Supports participating districts in building high-quality and inclusionary practices within Transitional Kindergarten programs.
- Features intentional alignment with MTSS systems and PIC (PreK Inclusion Champions) efforts.
- Creates additional inclusive opportunities for children with disabilities

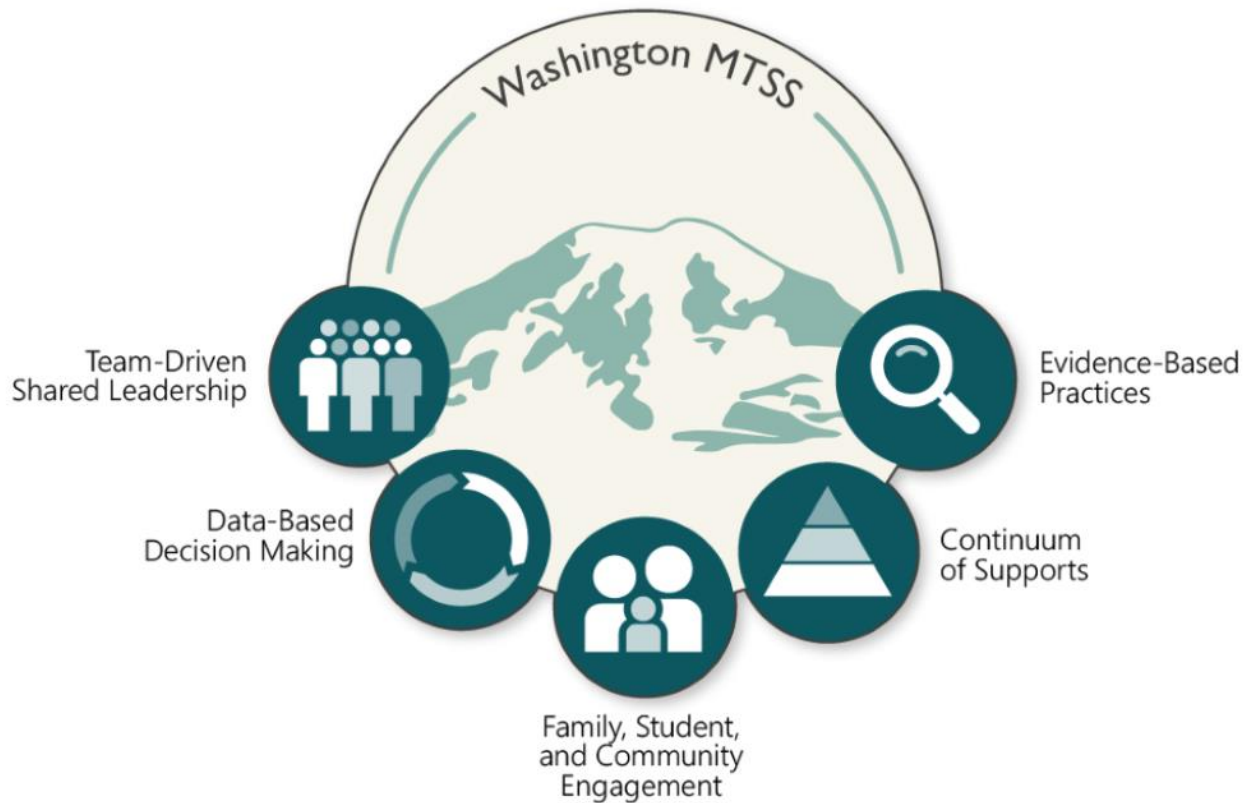


# Inclusive Transitional Kindergarten Activities

ITK Activity	Areas of Focus
<b>ITK Planning and Implementation Grant Support</b>	Washington Pyramid Model (WAPM) technical assistance, coaching, professional development, including general supports to district activities related to <a href="#">stages 1-2 of implementation science</a> .
<b>General Transitional Kindergarten Support</b>	Supports non-ITK grantee district offering TK
<b>Regional Collaboration and Planning</b>	Regional Implementation Team (RIC) engagement
<b>Statewide network engagement</b>	Coordinated Recruitment and Enrollment, PreK-3 Network, PreK/TK Inclusion Champions Network



# Washington Pyramid Model within Washington Multi-Tiered System of Supports



The Pyramid Model for Promoting Social Emotional Competence in Infants and Young Children



# ITK Grants 2021-2023

2021-2022	2022-2023
Participating Districts	Participating Districts
40	67
Total ESSER Funding: \$21 million	



Photo Copyright: [Anna Nahabed](#)

Focus on Inclusionary Practices through intentional alignment of grants and systems, paired with the refinement or initial development of an MTSS system, PreK-TK and beyond.

Purpose is to achieve positive student outcomes with the deployment of inclusionary practices within school districts utilizing the Stages of Implementation.



Washington Office of Superintendent of  
**PUBLIC INSTRUCTION**

# Questions?

- **Dr. Tania May**, Assistant Superintendent of Special Education, OSPI,  
[tania.may@k12.wa.us](mailto:tania.may@k12.wa.us)
- **Dr. Jon Ram Mishra**, Assistant Superintendent, Elementary Education, Early Learning, Special Programs, and Federal Accountability, OSPI  
[Jon.Mishra@k12.wa.us](mailto:Jon.Mishra@k12.wa.us)
- **Ryan Guzman**, Early Childhood Special Education/Sec. 619 Coordinator  
[Ryan.Guzman@k12.wa.us](mailto:Ryan.Guzman@k12.wa.us)
- **Samantha Bowen**, Executive Director of Early Learning  
[Samantha.Bowen@k12.wa.us](mailto:Samantha.Bowen@k12.wa.us)
- **Jenny Plaja**, Executive Director, Government Relations, OSPI  
[Jenny.Plaja@k12.wa.us](mailto:Jenny.Plaja@k12.wa.us)

