

Fair Start for Kids Act and Early Learning Investments Implementation Updates

House Children, Youth and Families Committee
January 12, 2021

Nicole Rose, Assistant Secretary of Early Learning, DCYF
Allison Krutsinger, Director, Office of Government Affairs and Community Engagement

www.dcyf.wa.gov



Washington State Department of
CHILDREN, YOUTH & FAMILIES

Overview

- Structural updates at DCYF
- Current COVID realities
- Stabilization Grants
- FSKA and EL budget updates
- Child Care Collaborative Task Force Update

<https://www.dcyf.wa.gov/about/government-affairs/fair-start-for-kids-act>



Overview of FSKA & EL Budget Components

- **Stabilization Grants**
- **ECEAP Expansion**
- **Working Connections Child Care**
- **Child Care Professional Development**
- **Grants and Rate Enhancements**
- **Child Care Health Benefits**
- **Indian Child Definition**
- **Language Access for Early Learning**
- **Home Visiting Expansion**
- **ECLIPSE Expansion**
- **Help Me Grow**
- **FFN Play and Learn Groups**
- **Early Learning Facilities Fund Grant**
- **IECMH-C Expansion**
- **Licensing Sub-Committee**
- **Organizational License Pilot**
- **Federal Child Care Stabilization Grants**

<https://www.dcyf.wa.gov/about/government-affairs/fair-start-for-kids-act>

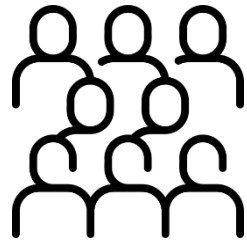


Stabilization Grants

- As of Dec. 31, 4,319 applications were approved and grant awards were distributed, totaling \$259,706,250 in grant funds.
- Payments are processed once a month through June 2022

License Type	Total Count	Total Amount	License Capacity
Child Care Center	1,137	\$106,773,000	85,971
Licensed Family Home	2,300	\$123,464,000	23,378
Outdoor Preschool	2	\$104,000	36
School-Age Program	343	\$28,584,000	21,126
Family, Friend, and Neighbor (FFN)	537	\$781,250	N/A
Total	4,319	\$259,706,250	130,511

Child Care Stabilization Grants Technical Assistance



Providers Served

- 2,765 Total TA Sessions
 - Center: 288
 - Homes: 1,646
 - FFN: 709
 - School-Age: 121



Languages Supported

- 29 languages supported
- Less than 5% use of interpreter, otherwise offered in primary language.
- Primary languages are English, Spanish, Somali

November & December 2021



Early Childhood Education and Assistance Program

2021 Activities:

- ECEAP Expansion Fall 2021 – 500 expansion slots awarded in Spring 2021
- Complex Needs funding application went live in September 2021
- ECEAP providers received 10% slot rate increase July 2021

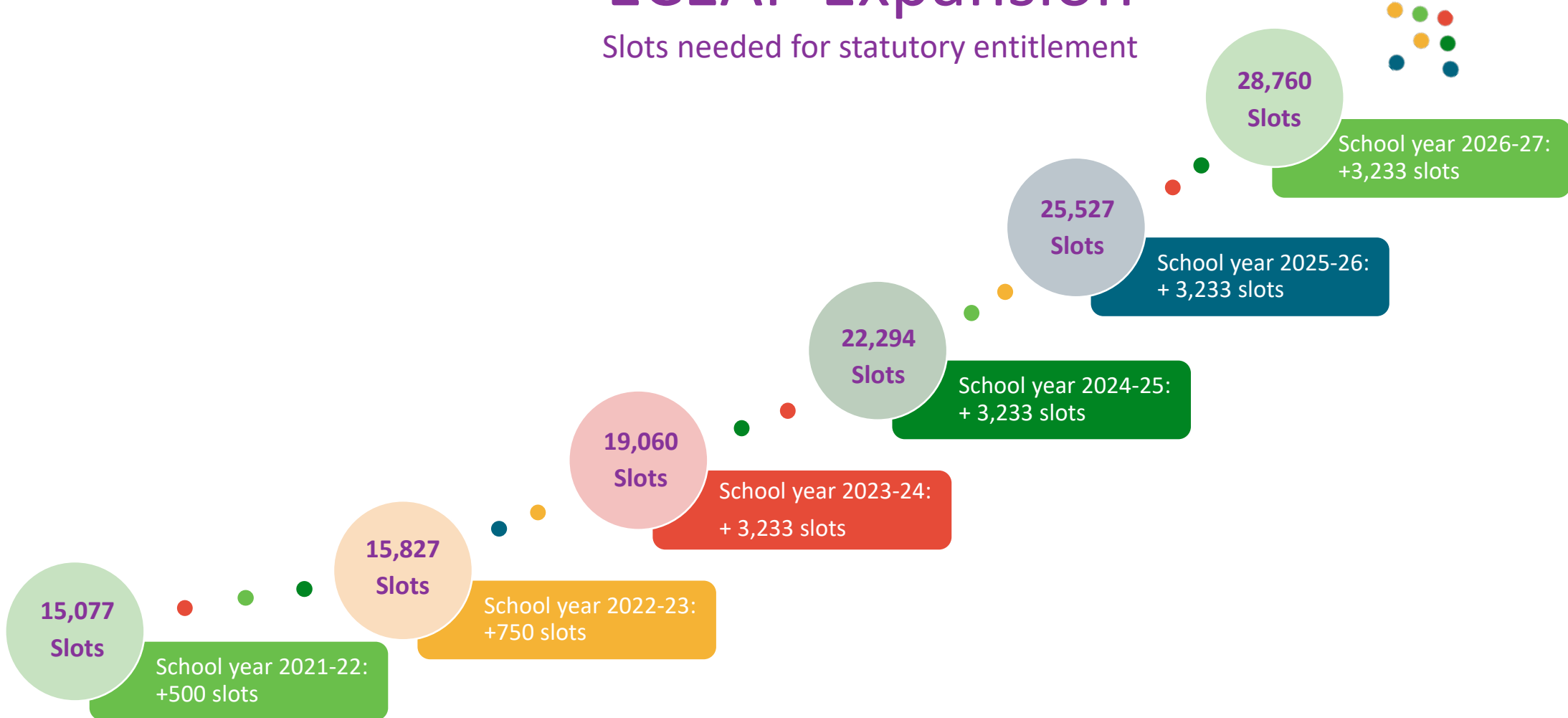
Planning Activities Underway:

- Continued Cost Study work
- ECEAP slot-need methodology work underway
- 2022-2023 ECEAP Expansion RFA application closed and scoring concludes end of January
 - Received applications for 1,358 slots



ECEAP Expansion

Slots needed for statutory entitlement



Working Connections Child Care Rates

July 1: Subsidy base rate raised to 85th percentile of Market Rate

- Went live on time
- Staff worked 6 days/week & overtime to meet deadline, including doing manual changes.

Upcoming: Nonstandard Hours Rate Model

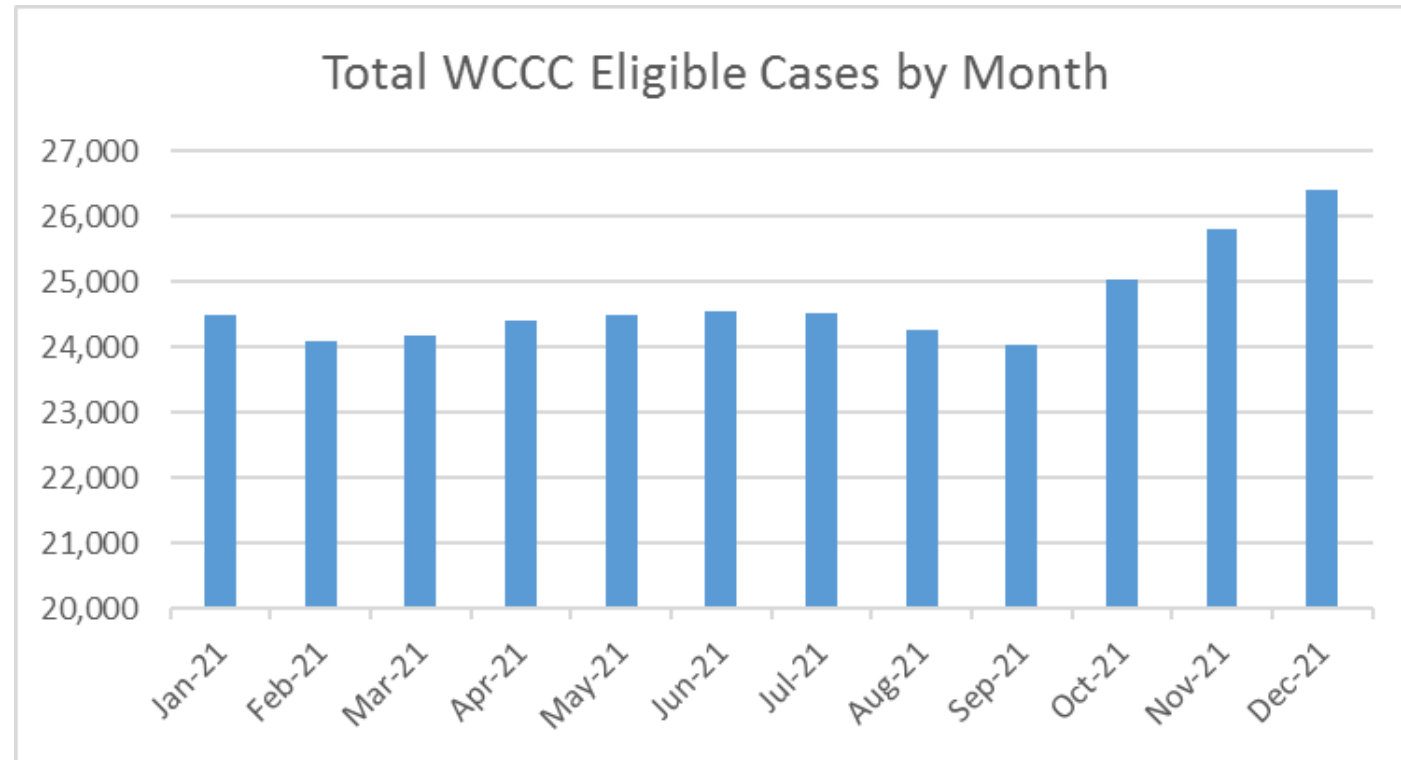
- Report is in the final stages of drafting.
- Early analysis shows 2/3 of providers recommend keeping the bonus in current form but increasing the amount.
- Survey included responses from providers in languages other than English



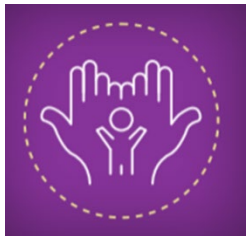
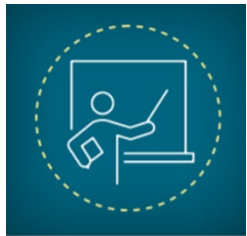
Working Connections Child Care

October 1: Increased income eligibility to 60% SMI and decreased copayments with set amounts and capping at 7% family income:

- All changes went live on time
- Strong partnership work with DSHS
- Within the first three months we have increased our eligible caseload by about 2,300 cases.
- Since Oct. we've increased number of families using subsidy by about 300



Child Care Professional Development



Training Development and Delivery

Expanded Dual Language and Multilingual Learners

Diverse Trainers

Trainer Development Pathway is available

Planning for Trainer Conference

Trauma Informed Care

Trauma Informed Care Manager started this January.

Continued planning: QRIS and Pyramid Model.

New Supports to meet Education Requirements

PACE Trainers are ready -- Enrollment Begins Spring 2022

Responsive Tribal Pathway: Partnership with IPEL and SBCTC

Scholarship Increase

Grants and Rate Enhancements

Dual Language in Early Learning:

DCYF formed a stakeholder group to inform the establishment of dual language designation for July 2022 implementation.

Complex Needs Funds for child care:

Stakeholder engagement underway.
Child care providers will be able to apply in early 2022.

Early Childhood Equity Grants:

Stakeholder engagement underway.
Application opportunities will be available in Spring 2022.

Infant rate enhancement:

Currently developing project plan.
Rate enhancement scheduled to be available in July 2022.



Child Care Health Benefits

New Premium Assistance Program for Employees of Licensed Child Care Facilities

- Brings monthly premiums down to \$0 for employees making up to 300% of FPL who enroll through Washington Healthplanfinder
- **Enrollment launched on time** – began with November Open Enrollment Period
- By mid-October, DCYF completed initial outreach to all identified employees of licensed child care facilities in WA (~34,000)
- Navigator effort yielding good results for getting providers signed up for a qualified health plan



Child Care Facilities and Licensing

Early Learning Facilities Fund grant program:

- 2021 community-based org. grant round closed Dec. 1
 - More than 140 applicants this year, \$73M total requests for \$22M funds
- Maintenance/renovation grant funding round opening Feb/March

Organizational license pilot project:

- In the stakeholdering and design phase. Includes meeting with provider groups and holding informational webinars. 28 orgs. participating. Pilot application to open in February.

Licensing subcommittee:

- Request for participation announcement went out in December.
 - Launch meeting scheduled for Jan. 12.



Language Access for Early Learning

Language Access

- Two Early Learning Language Access Coordinators (LAC), **Spanish and Somali speakers have been hired**
- LACs will address immediate language needs related to COVID-19 child care relief and recovery.
- LACs working to develop and implement language access services for early learning, and partnering in the development of an agency-wide strategy for language access.



Home Visiting

Home Visiting Expansion Fall 2021

RFP opened in April, slots awarded in fall on quick turnaround to meet October 1 deadline

Increased to serve 185 additional families at 7 programs across the state:

- Yakima Valley Memorial Hospital NFP (*Yakima County*)
- Chinese Information & Service Center PC+ (*King County*)
- First Step Family Support Center PAT (*Clallam and Jefferson Counties*)
- Thurston County Public Health & Social Services NFP (*Lewis and Mason counties*)
- Catholic Charities of Southwest WA PAT (*Yakima County*)
- Atlantic Street Center PC+ (*King and Pierce Counties*)
- Seattle King County Public Health NFP (*King County*)

Total Budget: \$1,311,082

- *Total applications: 14 programs, \$2,642,000*

Infant and Early Childhood Mental Health Consultation

Infant Early Childhood Mental Health-Consultation (IECMH-C) Expansion:

- CCA has hired 14 of 15 IECMHC
- Implementation guidance and protocols for the MHC team are fully developed.
- Case management and referral systems are operational and undergoing continuing refinement.
- MHCs are engaged in ongoing professional development training and certifications, both as a group and to meet individual workforce development goals.
- Collaboration and development of referral practices between MHCs and Coaches continues to develop and expand.
 - This is ground breaking work across the nation.
 - The partnership between coaches and consultants incredibly successful in increasing coach capacity and partnership to support provider needs

Child Care Collaborative Task Force Implementation Updates

- Commerce and DCYF reconvening task force fall 2021 – fall 2022 to complete a Cost of Quality (CoQ) Child Care study and cost model
- Contract has been signed with national partner who supported the only other state, and the District of Columbia, to successfully complete a CoQ study
- Commerce and DCYF also partnering with King County and City of Seattle who are undertaking their own cost studies
- Study will go out to the field end of Jan/early Feb
- Final report and recommendations due November 2022

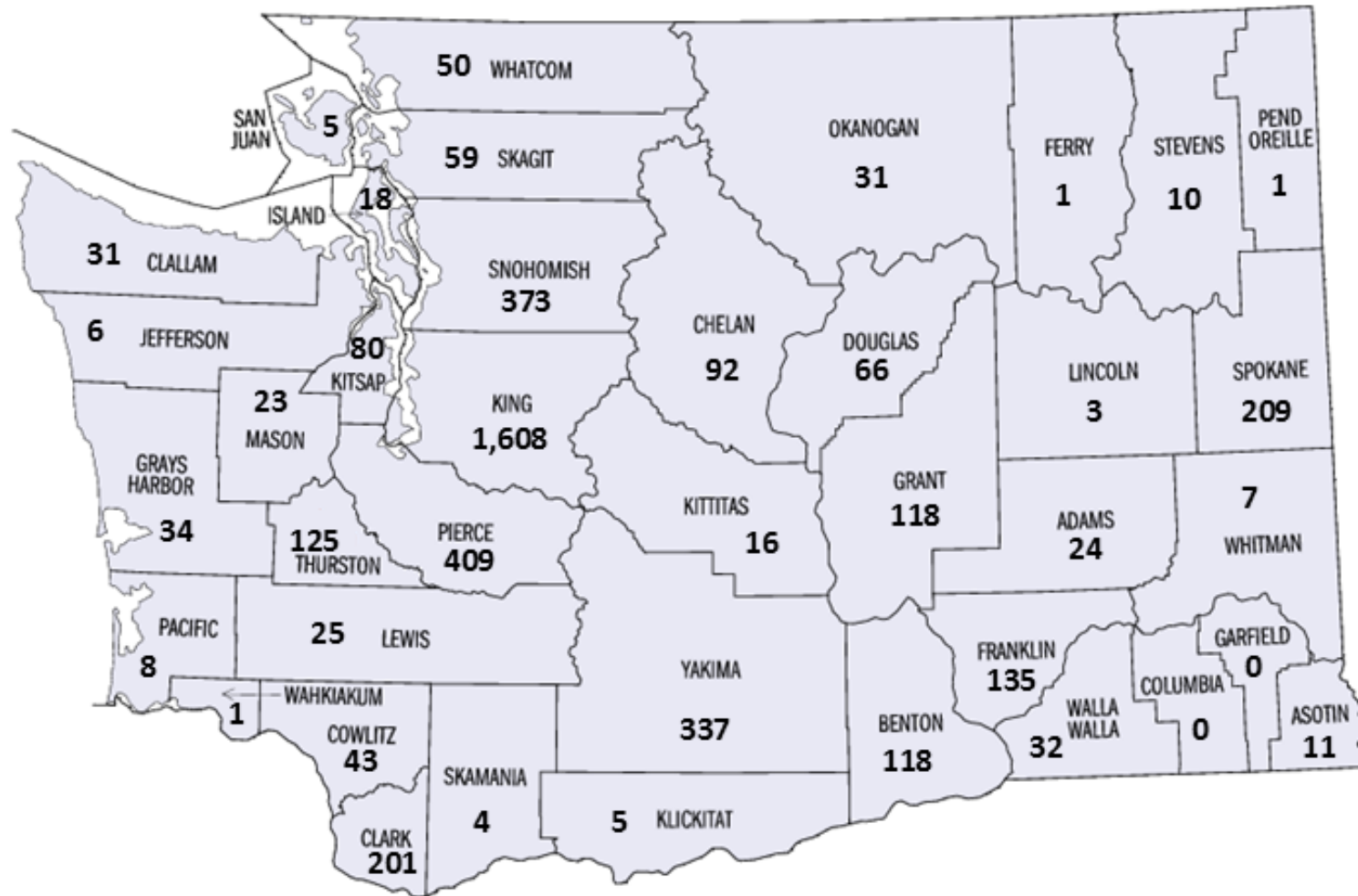
Questions?
dcyf.govaffairs@dcyf.wa.gov



Appendix



Stabilization Grants Awarded by County So Far



Stabilization Grants

Grant award includes program amount, workforce amount, and verifiable add-ons seen here on dashboard.

Data dashboards are live on:
<https://www.dcyf.wa.gov/practice/oiaa/reports/early-learning-dashboards/child-care-stabilization>

Dashboard Map - Zip Code Factors

Select the zip code criteria on the right to see specific zip code factors, separate or in combination.

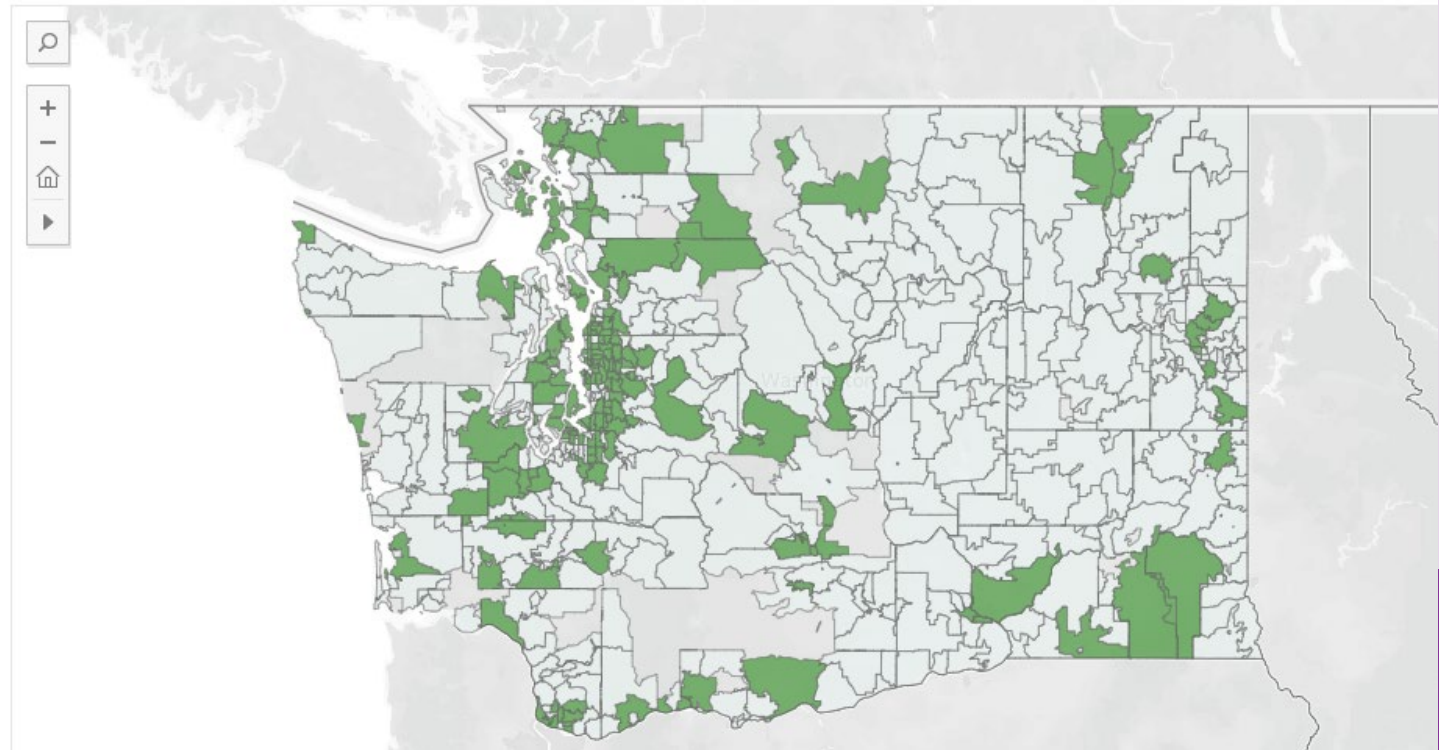
County: (All) ZIP Code: (All)

Rural Counties: (All)

Conditions Met: Yes No

ZIP Code Criteria:

- Extreme childcare access desert
- High rates child maltreatment
- High childhood poverty
- High AI/AN-Black-Hispanic-NH/PI children <5
- High children of color <15
- High COVID-19 impact



Implementation Timeline, pt. 1

JULY 2021	<ul style="list-style-type: none">• Expands approved activities and removes work requirements for student parents accessing Working Connections Child Care• Increase rates to the 85th percentile for licensed centers and family home providers• ECEAP slot rates increase by 10%• Child Care Subsidy copays are waived July, August, and September
FALL 2021	<ul style="list-style-type: none">• Child care stabilization grants• Complex needs funds to support ECEAP
OCTOBER 2021	<ul style="list-style-type: none">• Child Care Subsidy income eligibility to 60% state median income (SMI)• Child Care Subsidy copay steps align with conversion to SMI
WINTER 2021	<ul style="list-style-type: none">• Complex Needs Fund for child care
JANUARY 2022	<ul style="list-style-type: none">• Expand community-based option for ECE initial certificate completion
SPRING 2022	<ul style="list-style-type: none">• Early childhood equity grants



Implementation Timeline, pt. 2

JULY 2022	<ul style="list-style-type: none">• Dual language rate enhancement• Infant care incentive• Trauma-informed care supports• ECEAP slot rate increase• ECEAP eligibility increases to 35% SMI• Develop community-based training for equivalent to ECE short certificate• Continued expansion of community-based training for equivalent to ECE initial certificate
JULY 2023	<ul style="list-style-type: none">• Child Care Subsidy 50%-60% SMI copay step increases to \$165
JULY 2025	<ul style="list-style-type: none">• Child care subsidy income eligibility to 75% SMI
JULY 2026	<ul style="list-style-type: none">• ECEAP eligibility increases to 50% SMI, when accompanied by additional qualifying factors• Early ECEAP expansion
JULY 2030	<ul style="list-style-type: none">• ECEAP eligibility increases to 50% SMI, allowing voluntary entitlement

