

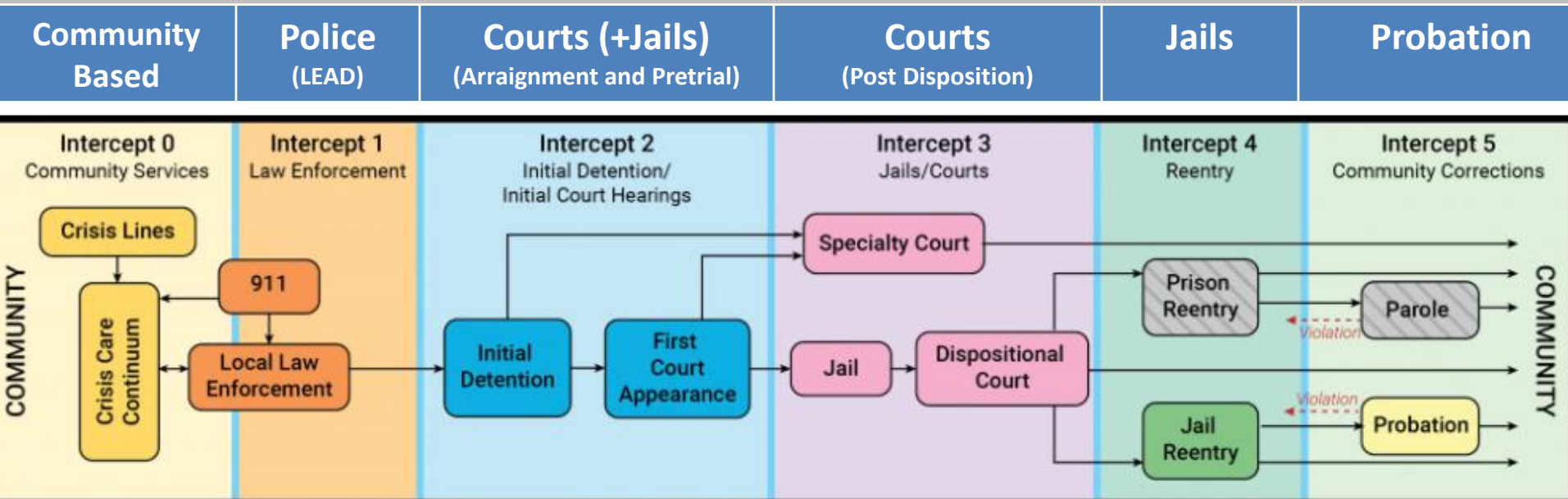
WHERE DO WE GO FROM HERE?



Judge Dave Larson

Federal Way Municipal Court

Sequential Intercept Model

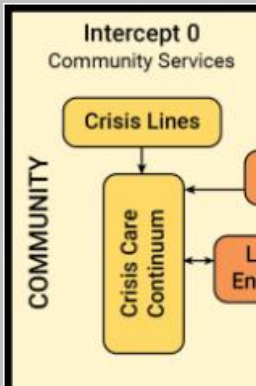


© 2016 Policy Research Associates, Inc.

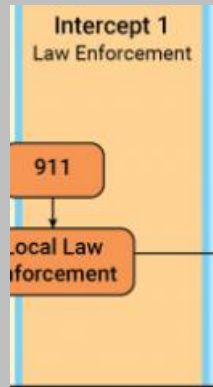
Justice Involved Therapeutic Intervention

Regional issue that needs
state financial support

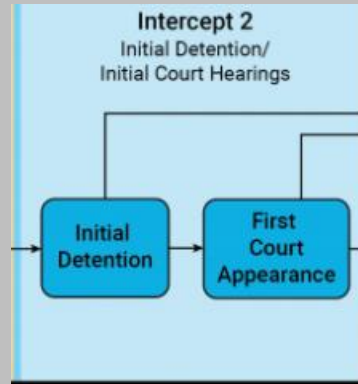
Current Fragmented Approach



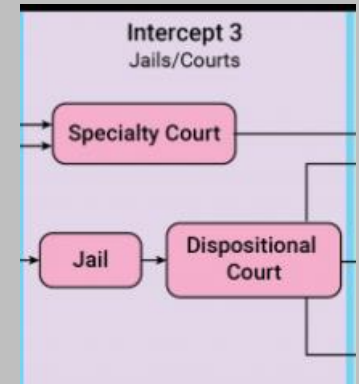
Community Based Programs



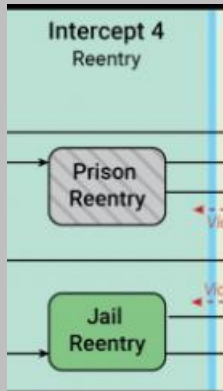
L.E.A.D. & Blake Diversion



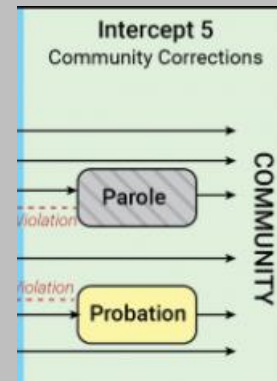
Pretrial Release Programs



Therapeutic Courts



Jail Reentry Programs



Probation Services

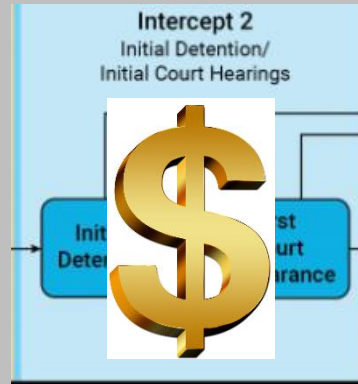
Fiscal Inefficiencies



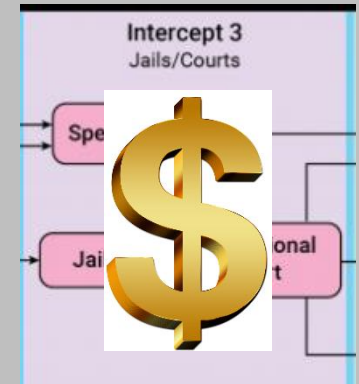
Community Based Programs



L.E.A.D. & Blake Diversion



Pretrial Release Programs



Therapeutic Courts



Jail Reentry Programs

Net Effect is that we compete for limited funds for OUR program



Probation Services

Impacts for Participants

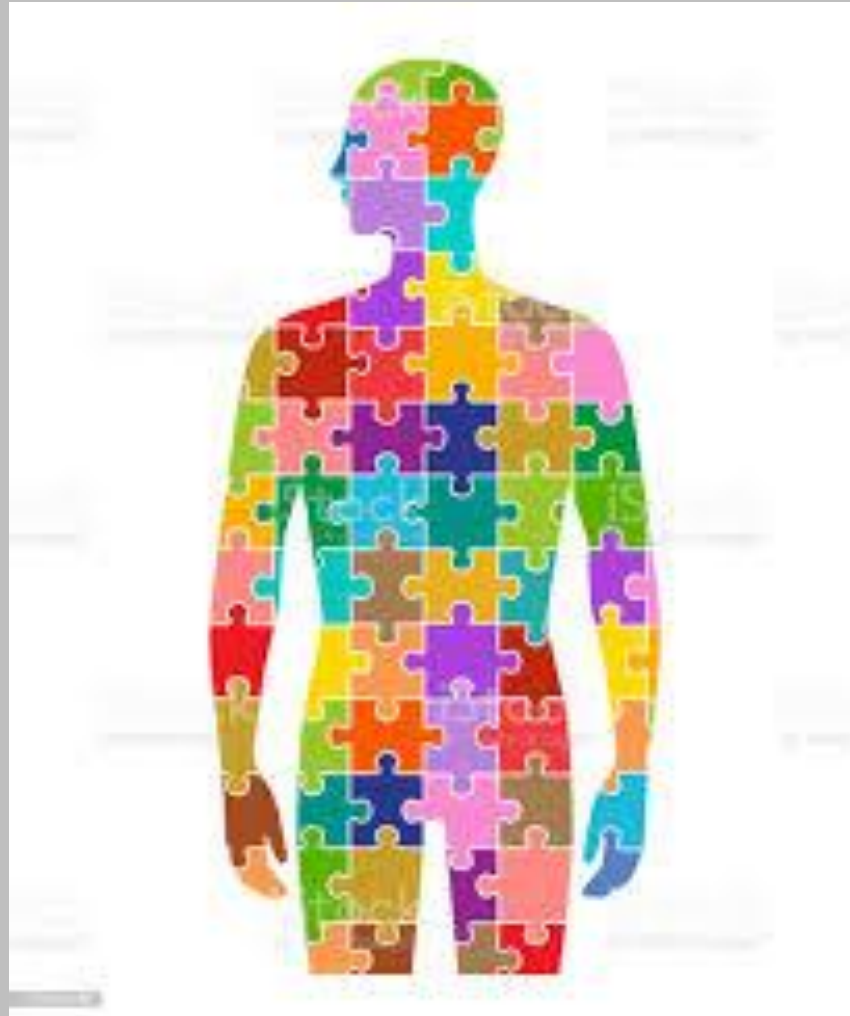


Program/System Based Approach

Participant Based Approach

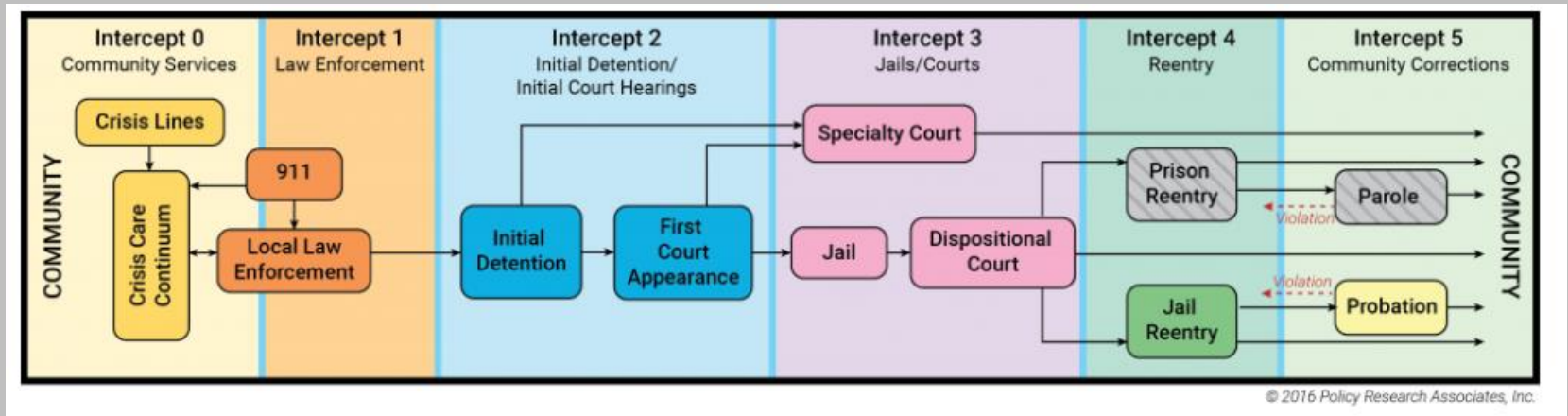


Whole Person Focus = Results



Regional Resource Networks Linkage

Best Use of Resources for Best Results

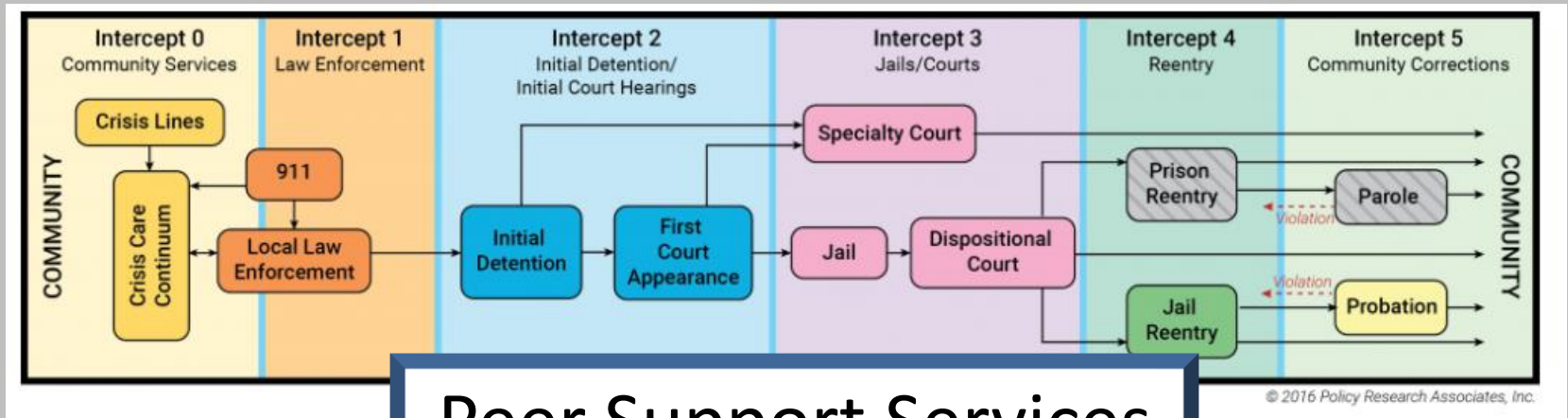


Regional Resource Networks

It's all about establishing linkage!



Peer Support Warm Handoff



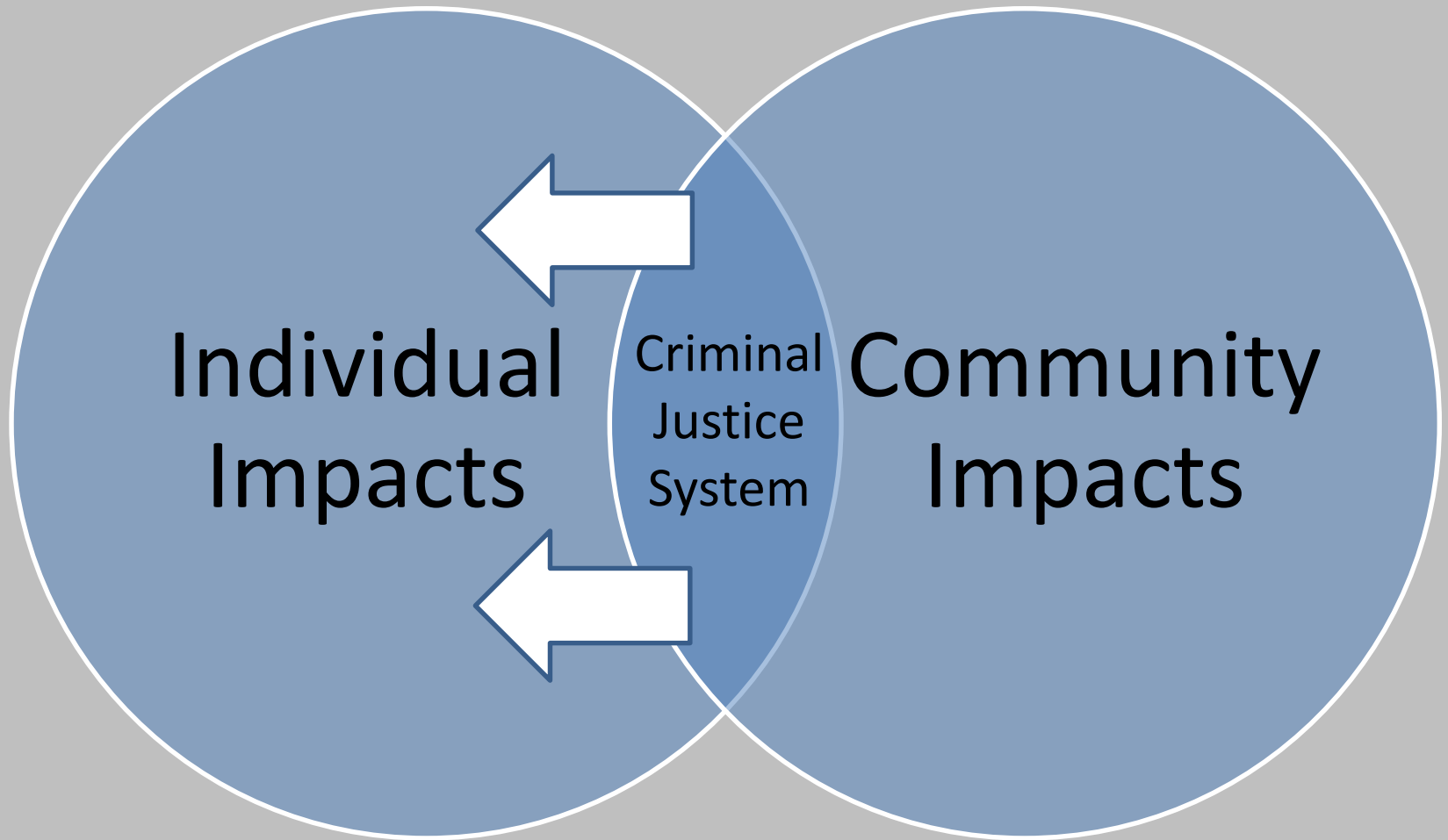
Peer Support Services

Regional Resource Networks

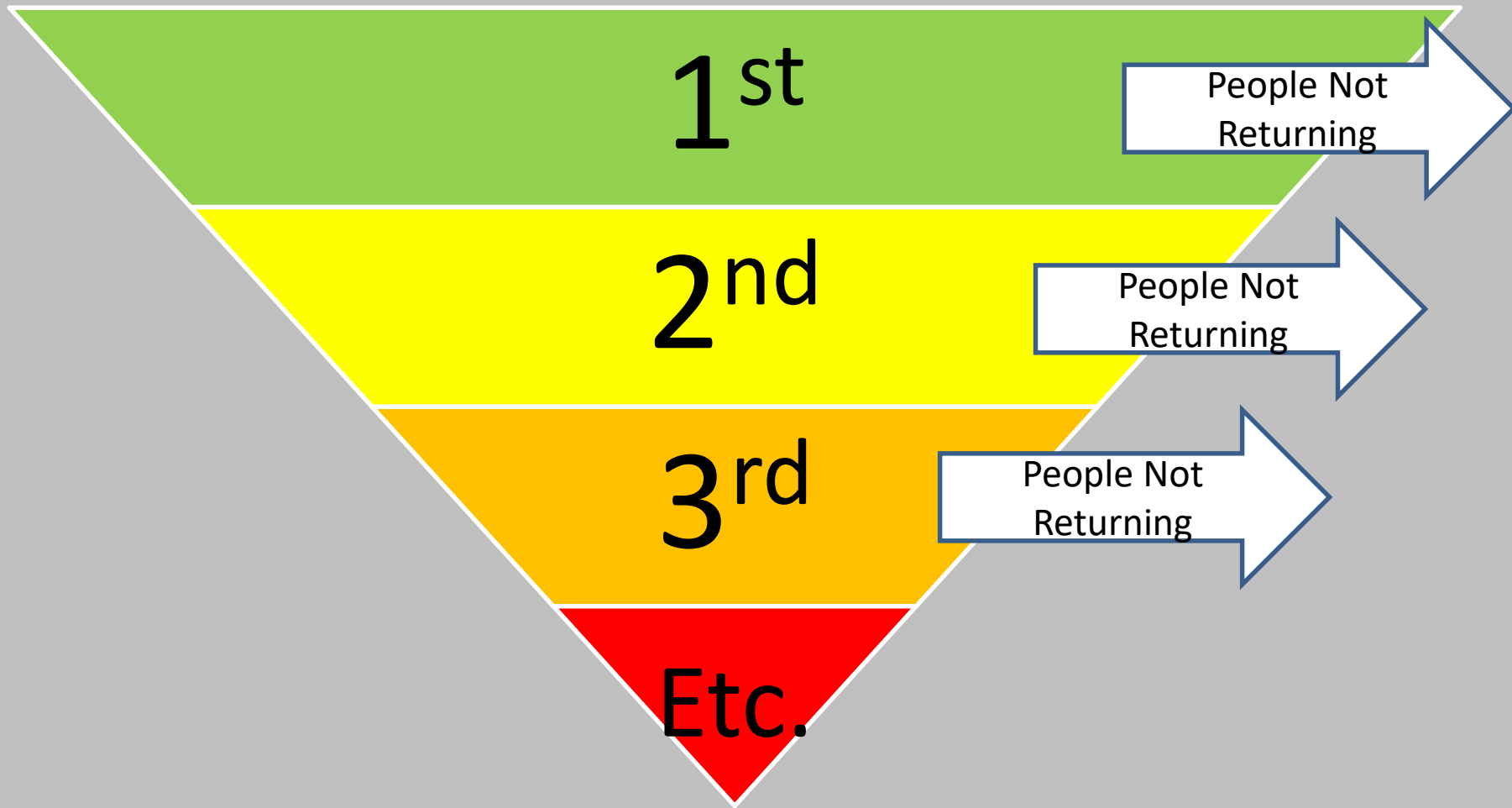
Individual & Community Impacts



Reduce Community Impacts



Early, Strategic, and Coordinated Intervention Using SIM



Current Approach



Crime

Punitive

Therapeutic

Proposed Approach

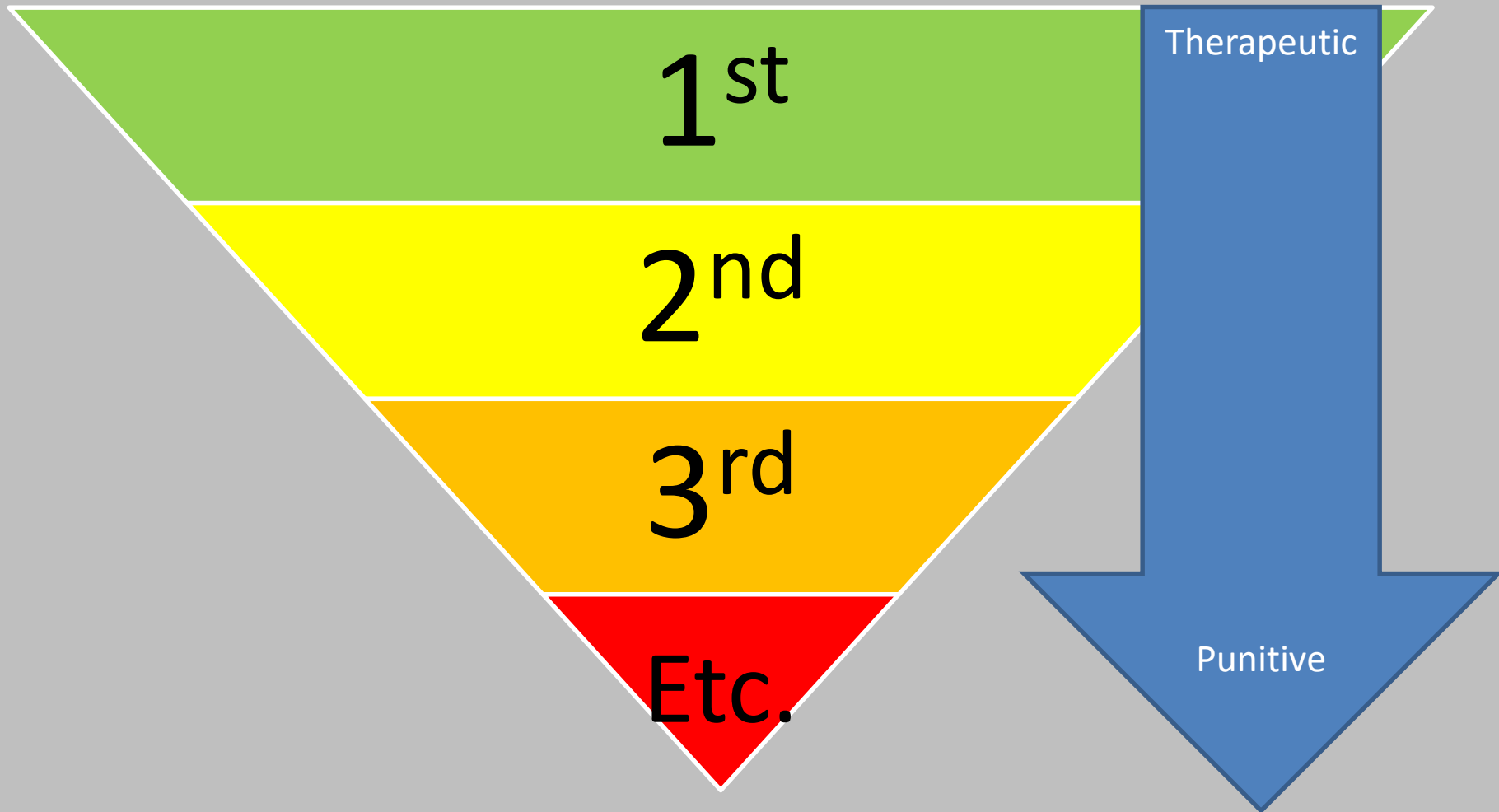


Crime

Therapeutic

Punitive

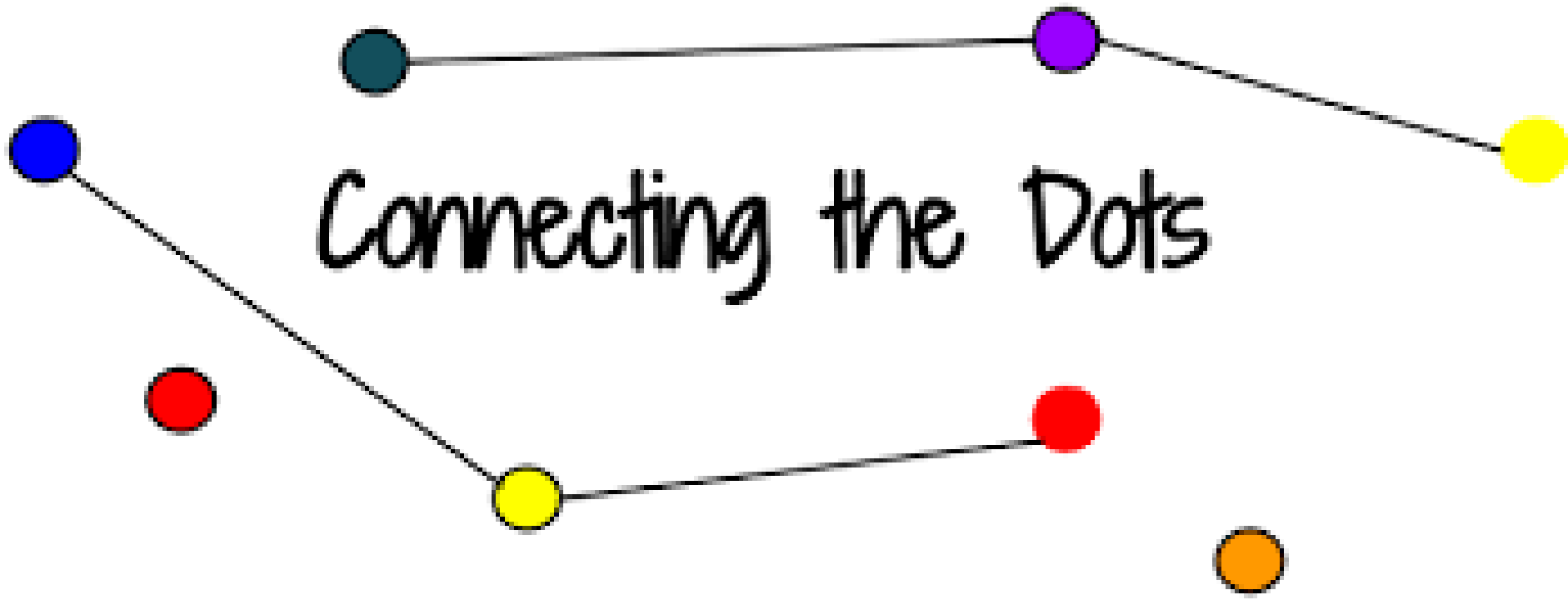
Ramping Up the Response



Therapeutic Detention Facilities



Connecting the Dots



Stakeholders

- Law enforcement
- Courts
- Jails
- Probation
- Peer navigators
- Treatment facilities
- Treatment agencies
- Social service agencies
- Community-based programs

Crucial Data Points for Success

- Court dates
- Criminal history
- Custody status
- Other justice involved matters
 - Family law
 - Landlord tenant
 - Collections
- Peer navigator name
- Counsel contact information
- Treatment status
 - Inpatient
 - Outpatient
 - Successful or unsuccessful completions
- Blake law enforcement contacts
- Other therapeutic intervention history
- Public benefits
- Education status
- Job status
- Other?

Examples of Insufficient Data

- Blake Law Enforcement Referrals
- In Patient Treatment

SHARE



Benefits of Data Sharing

- Only needs to be superficial and necessary data
- All stakeholders see crucial data that affects their intervention
 - All stakeholders see history of intervention
- Participants can update contact information
- Participants can get notifications of key dates
 - Court
 - Treatment
 - Etc.

SAW Accounts?



WELCOME

to your login for Washington state.



[SIGN UP!](#)

[GET HELP](#)

[TIPS ON](#)

LOGIN

USERNAME

PASSWORD

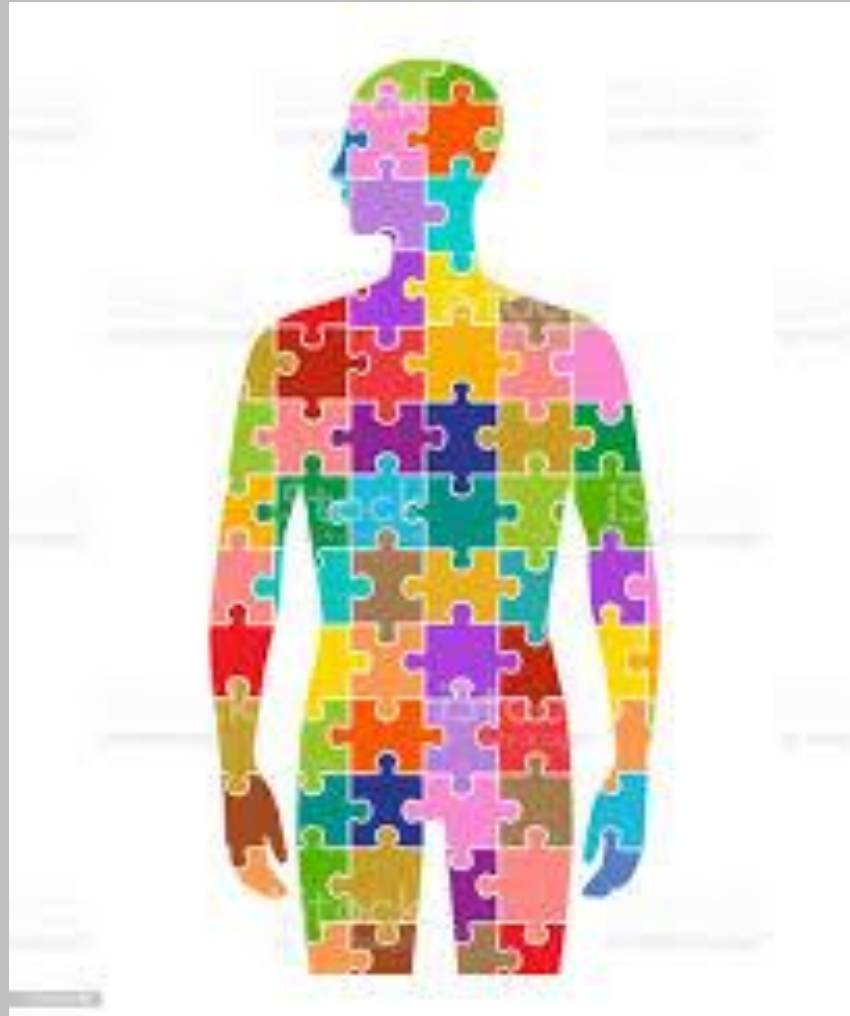
SUBMIT

[Forgot your username?](#) | [Forgot your password?](#)

ON BEHALF OF



Whole Person Focus = Results



what's the
opposite of
haphazard?



methodical, systematic, careful,
deliberate, planned, organized,
specific, painstaking,
intentional, definite



Food for Thought

“I run a repair shop, not a junkyard”

“Let’s look for ways to do things together, and avoid looking for ways to do the same thing separately”

“Disagreement is an opportunity, not a threat”

Thank you!!