

Initial Analysis of Census Data

August 16, 2021

Regular Meeting

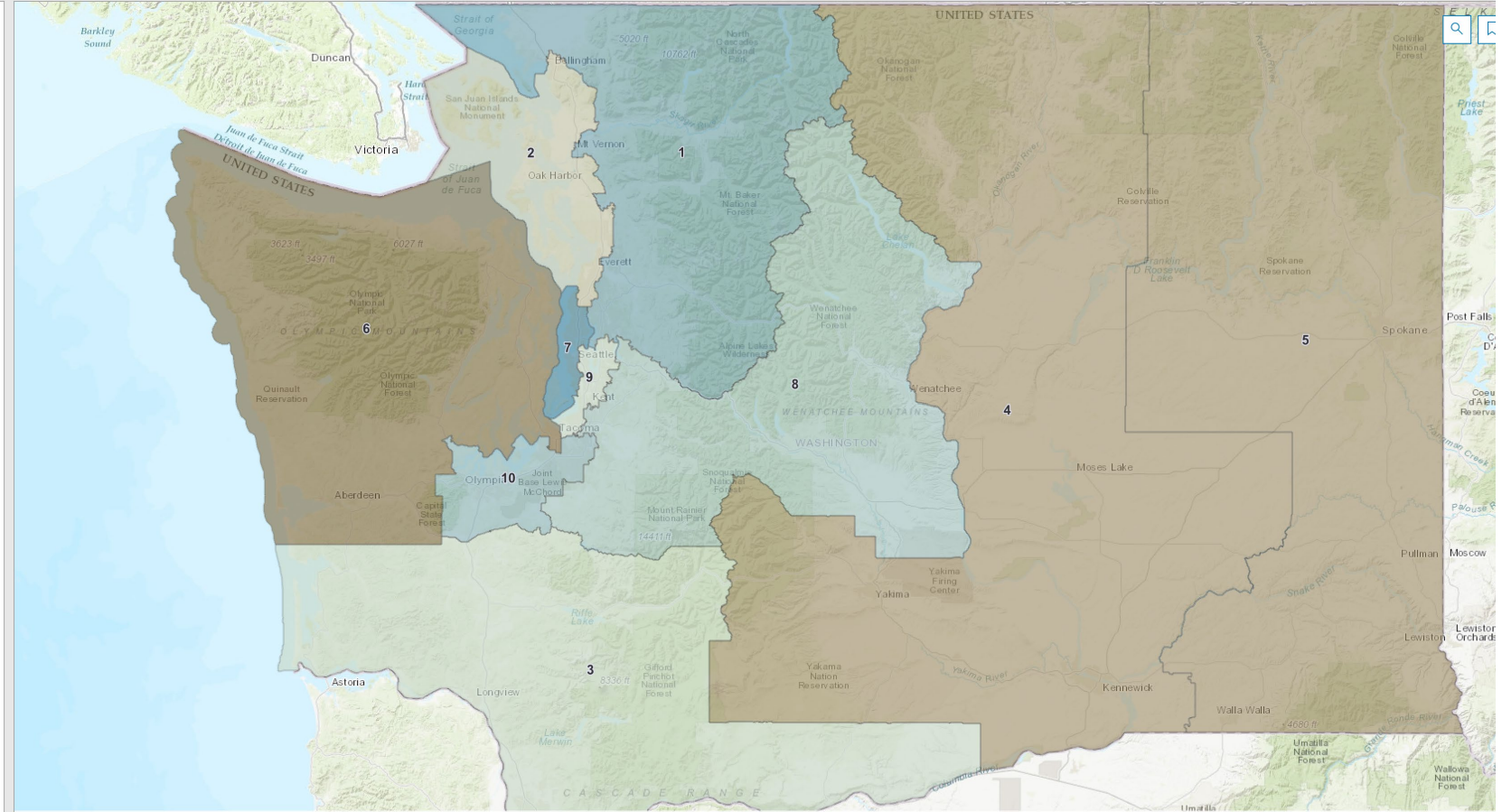
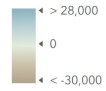
Washington State Redistricting Commission



Washington State Redistricting Commission

Congressional
Districts -
Compared to
770,528

2020 Population -
Above or below
target



<https://leg-tech.maps.arcgis.com/apps/dashboards/39607204aed24cf39f25c9553199f2de>

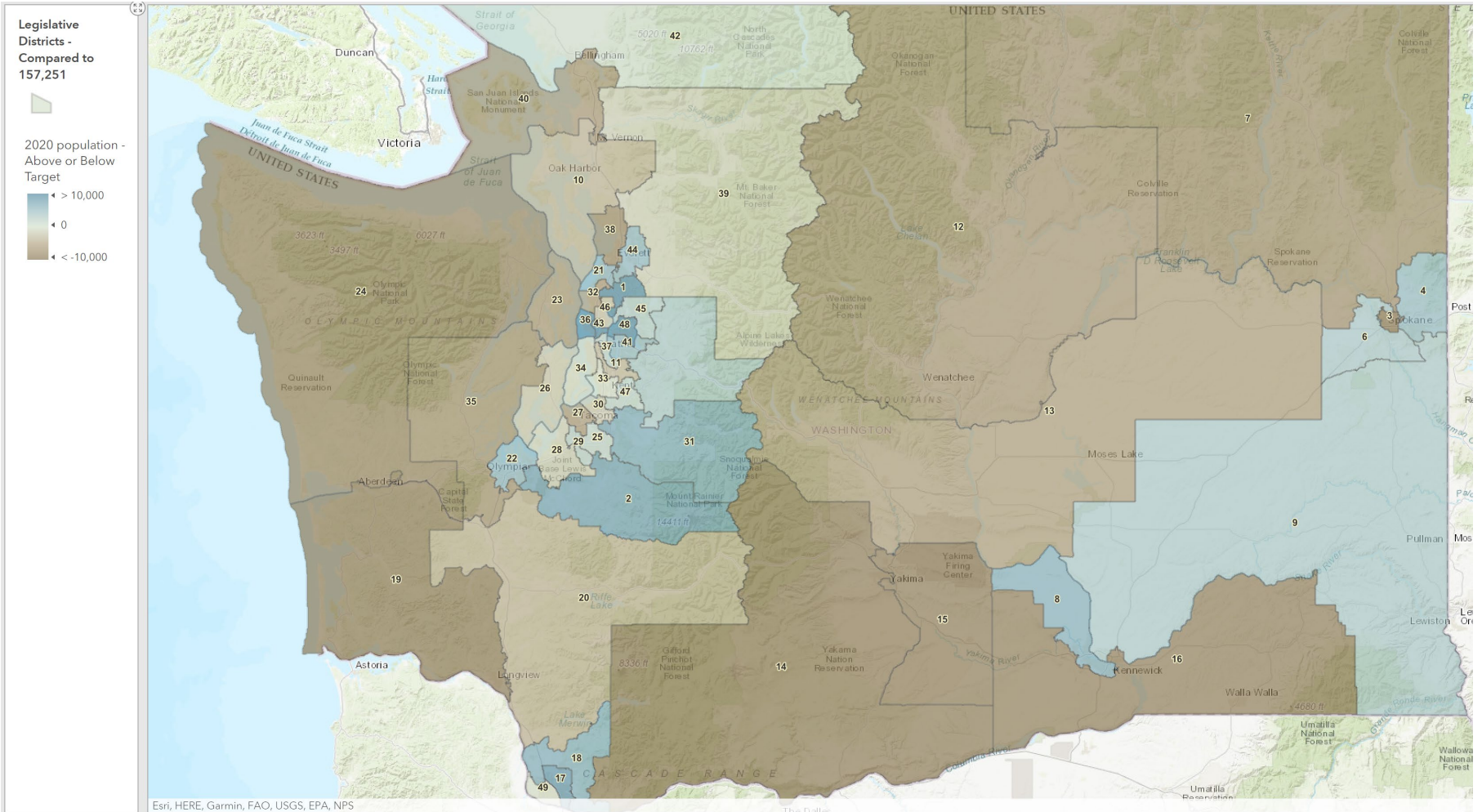
2020 Population Compared to Target

Congressional

Congressional District Name	Pop 2010	Target	Pop 2020	Difference
District 01	672,444	770,528	789,740	19,212
District 02	672,454	770,528	764,366	-6,162
District 03	672,448	770,528	772,750	2,222
District 04	672,456	770,528	751,843	-18,685
District 05	672,455	770,528	751,208	-19,320
District 06	672,448	770,528	736,798	-33,730
District 07	672,457	770,528	799,390	28,862
District 08	672,463	770,528	780,494	9,966
District 09	672,460	770,528	773,419	2,891
District 10	672,455	770,528	785,273	14,745



Washington State Redistricting Commission



<https://leg-tech.maps.arcgis.com/apps/dashboards/39607204aed24cf39f25c9553199f2de>

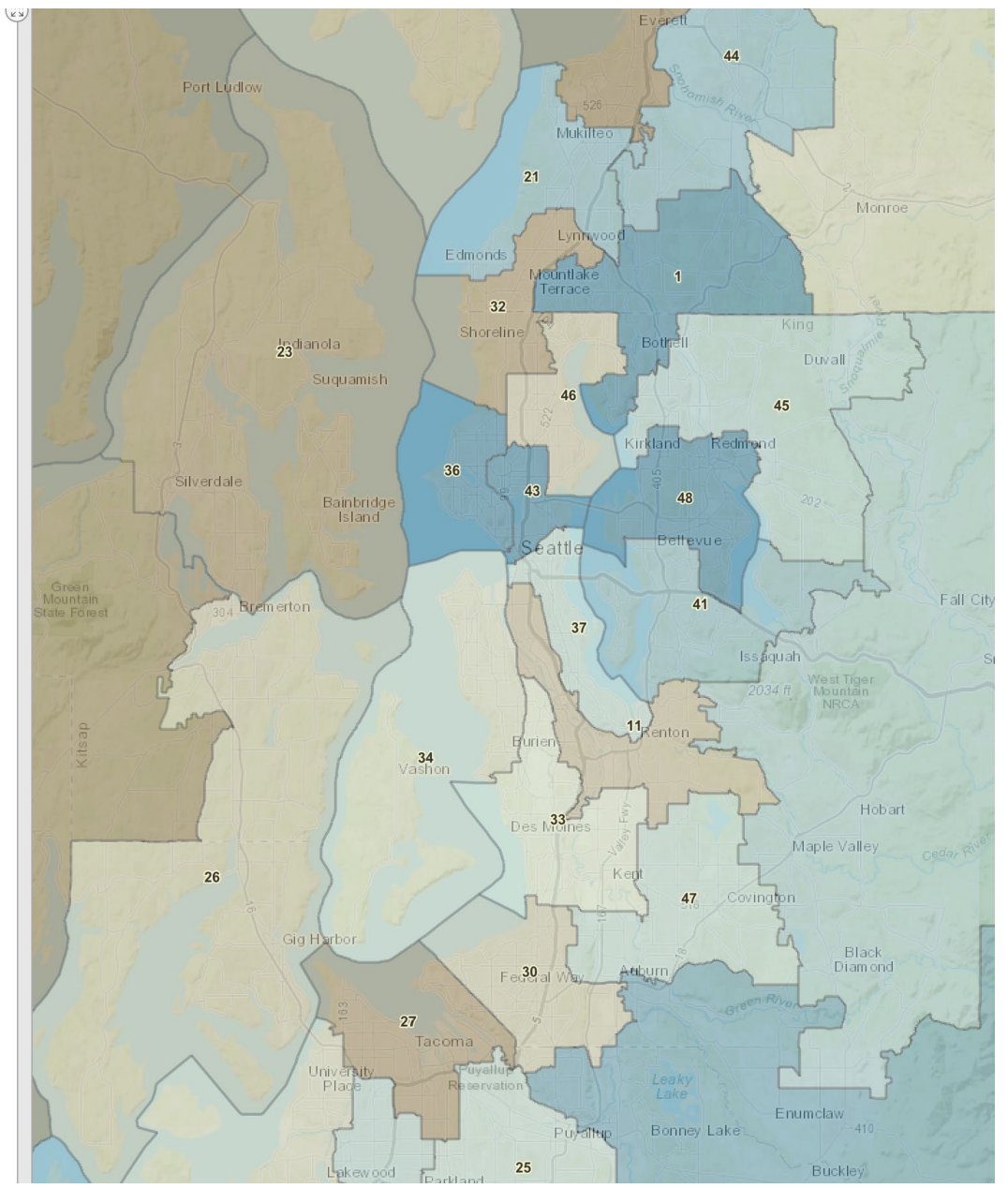
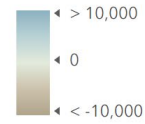


Washington State Redistricting Commission

Legislative Districts - Compared to 157,251



2020 population - Above or Below Target



Zoomed in view of Legislative Districts in Puget Sound

<https://leg-tech.maps.arcgis.com/apps/dashboards/39607204aed24cf39f25c9553199f2de>

2020 Population Compared to Target

Legislative Districts

Legislative			
Legislative Districts	Target Pop	Pop 2020	Difference
District 01	157,251	171,010	13,759
District 02	157,251	165,543	8,292
District 03	157,251	145,485	-11,766
District 04	157,251	162,828	5,577
District 05	157,251	161,143	3,892
District 06	157,251	161,193	3,942
District 07	157,251	149,396	-7,855
District 08	157,251	164,048	6,797
District 09	157,251	161,037	3,786
District 10	157,251	152,840	-4,411
District 11	157,251	153,714	-3,537
District 12	157,251	149,835	-7,416
District 13	157,251	150,687	-6,564
District 14	157,251	147,266	-9,985
District 15	157,251	144,666	-12,585
District 16	157,251	147,441	-9,810
District 17	157,251	166,460	9,209
District 18	157,251	164,365	7,114
District 19	157,251	144,220	-13,031
District 20	157,251	152,713	-4,538
District 21	157,251	163,175	5,924
District 22	157,251	163,191	5,940
District 23	157,251	150,109	-7,142
District 24	157,251	148,283	-8,968

District 25	157,251	159,282	2,031
District 26	157,251	154,525	-2,726
District 27	157,251	150,834	-6,417
District 28	157,251	155,734	-1,517
District 29	157,251	159,848	2,597
District 30	157,251	154,972	-2,279
District 31	157,251	164,708	7,457
District 32	157,251	150,951	-6,300
District 33	157,251	156,702	-549
District 34	157,251	156,025	-1,226
District 35	157,251	149,357	-7,894
District 36	157,251	175,068	17,817
District 37	157,251	159,385	2,134
District 38	157,251	148,950	-8,301
District 39	157,251	155,384	-1,867
District 40	157,251	150,090	-7,161
District 41	157,251	162,756	5,505
District 42	157,251	157,855	604
District 43	157,251	180,014	22,763
District 44	157,251	163,109	5,858
District 45	157,251	160,349	3,098
District 46	157,251	154,648	-2,603
District 47	157,251	159,378	2,127
District 48	157,251	168,086	10,835
District 49	157,251	156,623	-628