



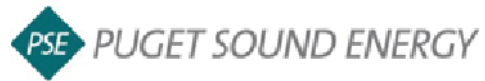
# Cascadia Innovation Corridor - Vision 2050

A MEGA-REGION SUSTAINABLE GROWTH VISION

11 MARCH 2021



# Challenge Seattle



JPMORGAN CHASE & CO.

NORDSTROM



BILL & MELINDA  
GATES foundation

T Mobile



FRED HUTCH  
CURES START HERE™





# Cascadia Innovation Corridor



Committed Leaders.  
Shared Vision.  
Greater Good.



Business Council of  
British Columbia  
Est. 1966

## STEERING COMMITTEE

### Initiative CEOs:

**Chris Gregoire**

CEO Challenge Seattle &  
Former Governor, WA State

**Greg D'Avignon**

CEO Business Council of  
British Columbia

Best & Diverse Talent

Efficient Cross-  
Border Movement

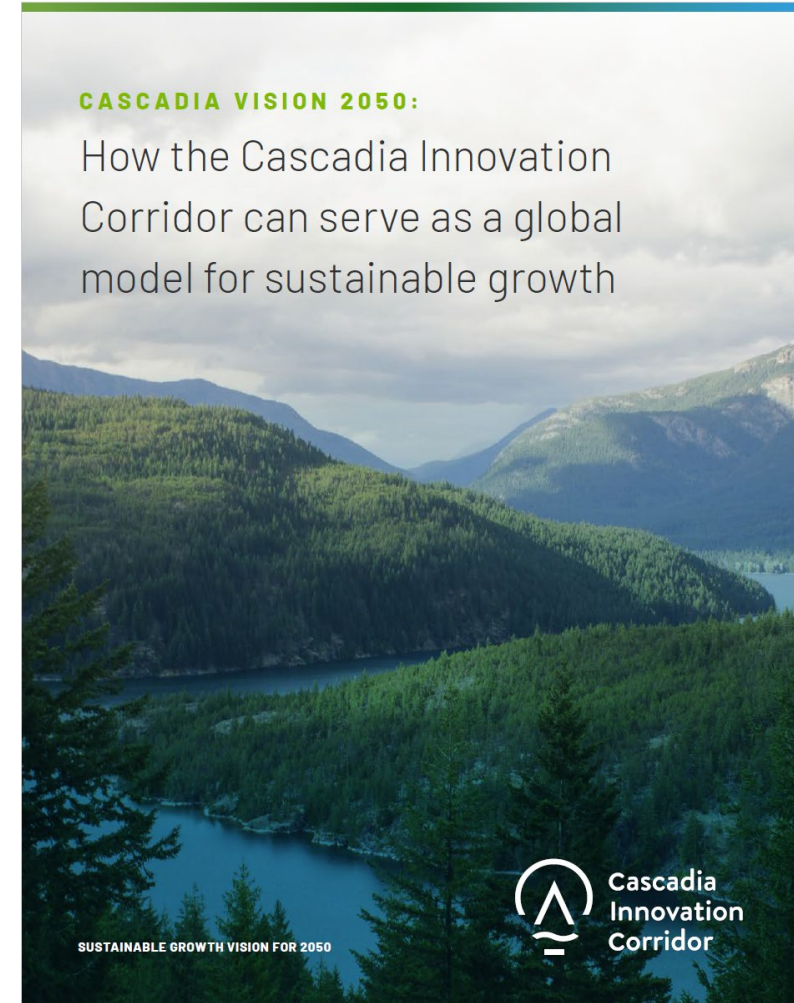
Life Sciences

Sustainability

Transformative  
Technologies

Higher Education  
Research Excellence

Transportation,  
Housing, &  
Connectivity



# Growth and sustainability challenges projected to continue across Cascadia

## Growth

	Last 30 years	Next 30 years
Population	+3.6M	+3-4M
GDP	+\$540B*	+\$750B
Median income	+\$48k*	+\$70k

*\*2X faster than Canadian or US national averages*

## Challenges

### **Housing: 40% increase**

Over last 20 years in % the median family will spend on housing

### **Commute: 52 add'l hrs**

Additional commute time per year

### **Emissions: flat**

Total transportation emissions over last 20 years

How can our mega-region serve as a model for sustainable growth?





# Three sustainable growth 'pillars' addressable at the mega-region level



Housing affordability



Transportation

Climate

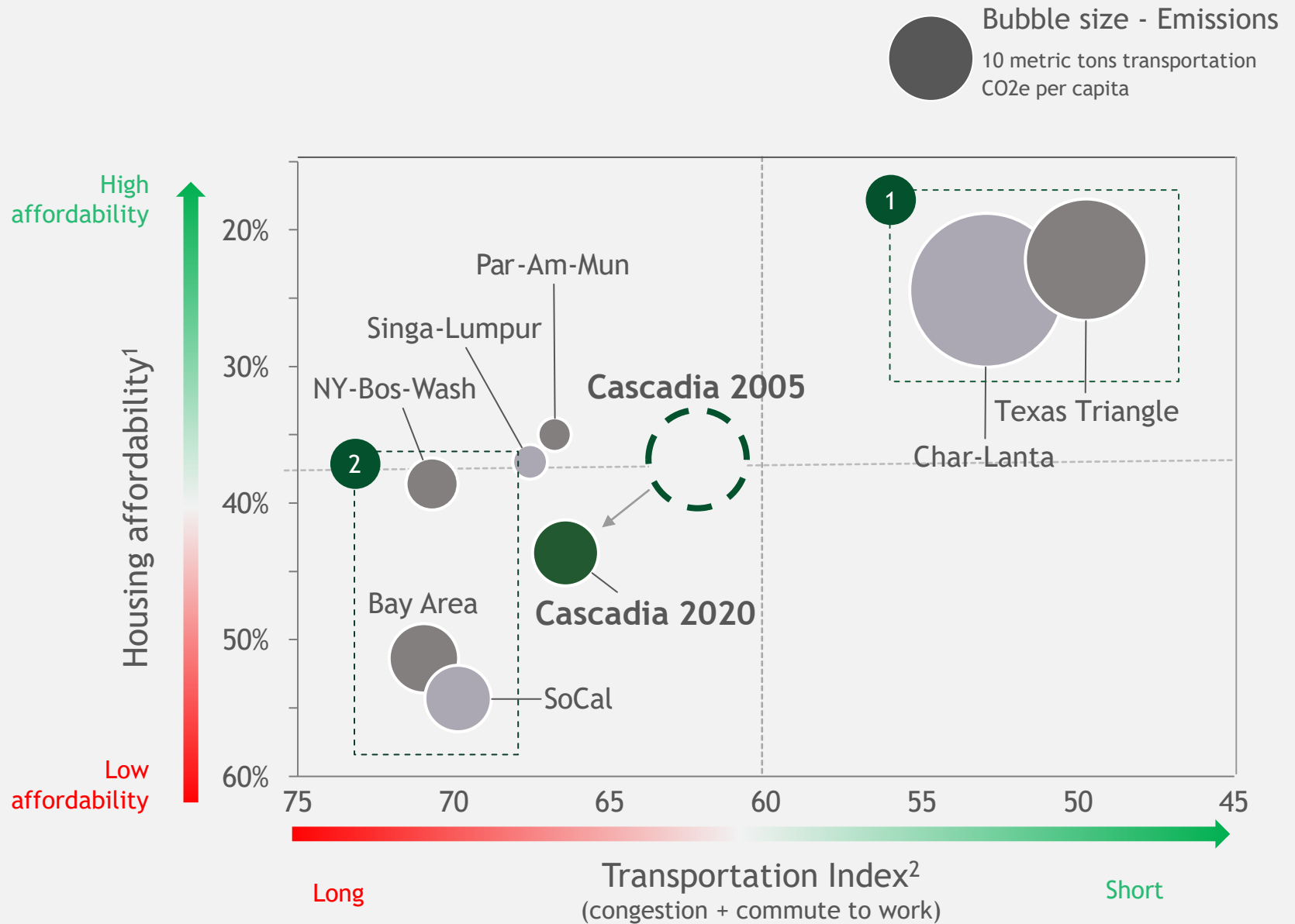


# Cascadia today

## Two clusters of peer mega-regions

1 Grow out

2 Grow up



1. Median monthly housing payment / median monthly gross income

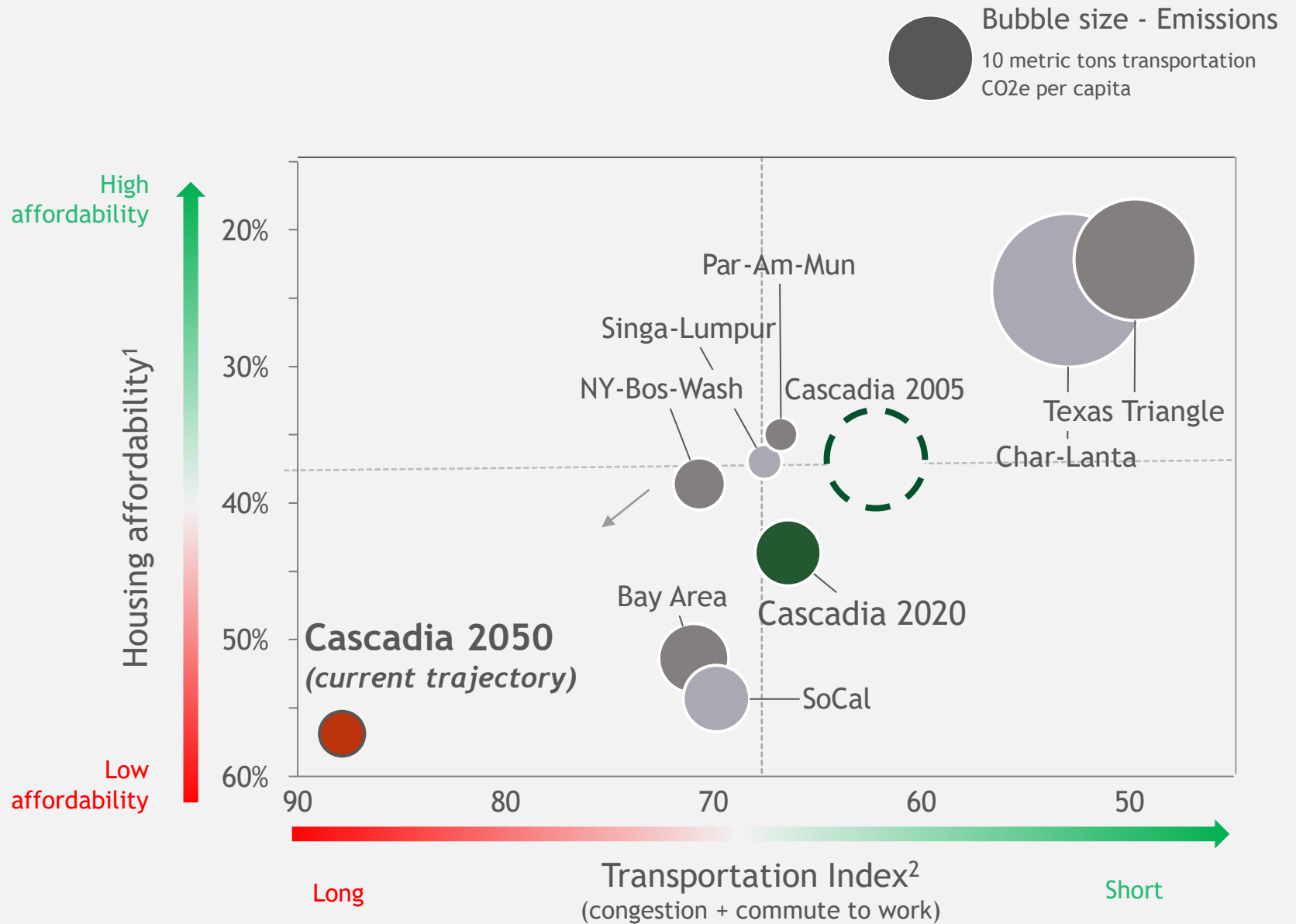
2. 2. Combines TomTom percent congestion and average commute to work (minutes)

On current trajectory,  
Cascadia will ...

...have worse traffic  
congestion than LA  
today by 2035...

...be less affordable  
than New York or San  
Francisco today by  
2040...

...and emissions well  
above of Paris Climate  
Accord goals by 2050



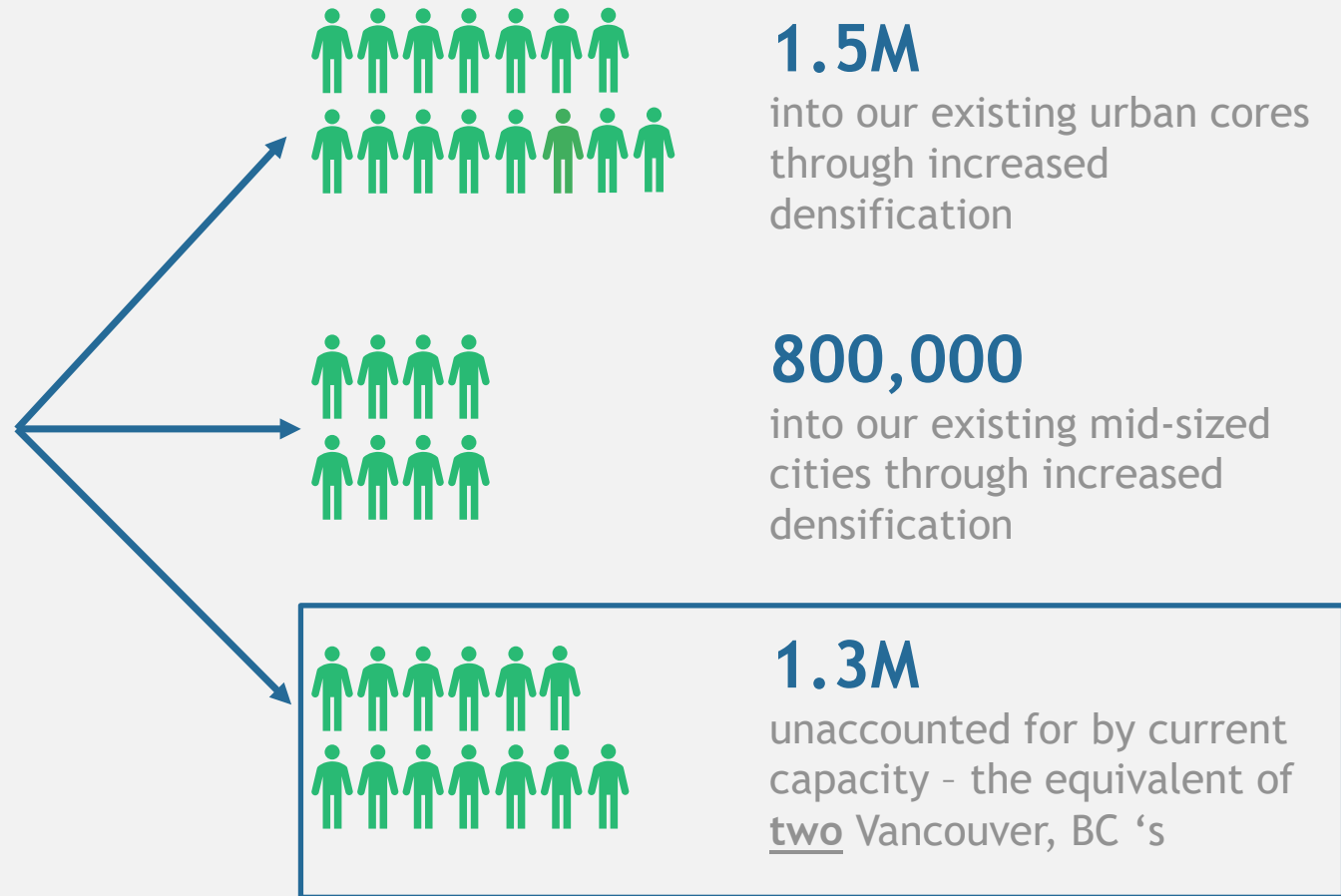
1. Median monthly housing payment / median monthly gross income

2. Combines TomTom percent congestion and average commute to work (minutes)

# Accommodating population growth requires us to think bigger

3-4  
Million

Estimated increase in population in Cascadia by 2050





# A Path to a Sustainable Mega-Region

- 1 **Densify current urban centers**
- 2 **Grow existing mid-size cities**
- 3 **Plan for new population centers (hub cities) on underdeveloped land**
- 4 **Connect it all via Ultra Highspeed Transportation**

## Hub cities

A vision for sustainable growth

Built on underdeveloped land 40-100 miles from urban core

Connected by high-speed transit (HST) and multi-model local transit

Dense housing for 300-400K people per hub

150-200k jobs per hub city





[bcg.com](https://www.bcg.com)