

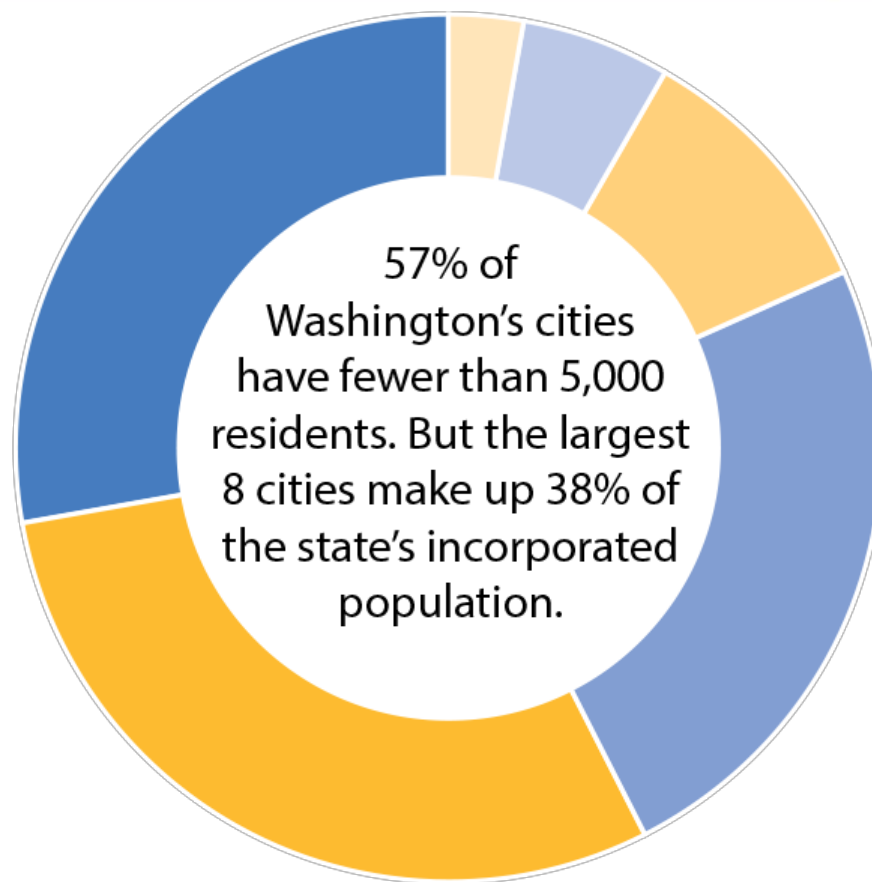
An overview of Washington's cities and towns







Candice Bock, Government Relations Director
Association of Washington Cities





Cities by population range



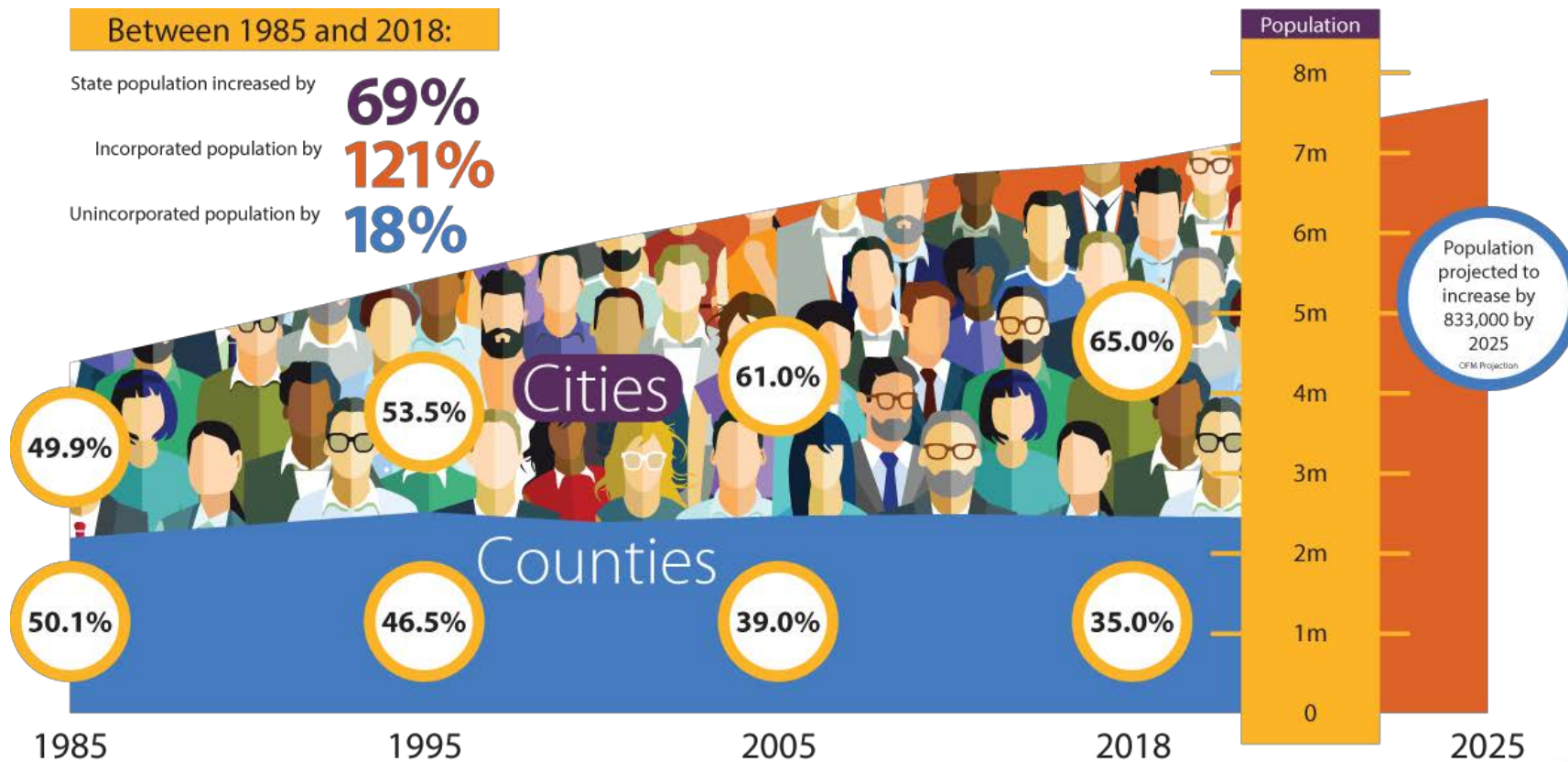
Population Number of cities	
	Over 100,000 8
	50,000 - 100,000 17
	20,000 - 50,000 29
	5,000 - 20,000 66
	1,000 - 5,000 82
	Less than 1,000 79

Source: Office of Financial Management





Cities are growing





City operating revenue



Source: State Auditor's Office; general and special revenue funds.



How city funds are used



Source: State Auditor's Office; general and special revenue funds.





Unfunded Mandates

Unfunded Mandate Statute

RCW [43.135.060](#)

Prohibition of new or extended programs without full reimbursement—Transfer of programs—Determination of costs.

- (1) After July 1, 1995, the legislature shall not impose responsibility for new programs or increased levels of service under existing programs on any political subdivision of the state unless the subdivision is fully reimbursed by the state for the costs of the new programs or increases in service levels. Reimbursement by the state may be made by: (a) A specific appropriation; or (b) increases in state distributions of revenue to political subdivisions occurring after January 1, 1998.





Cost Drivers & Mandates

Infrastructure & Transportation

Employee costs - state mandated benefits and rates

New service needs - affordable housing & homelessness response

Other mandates - Public Records Act & Indigent Defense





Infrastructure

Cities are on the front lines of infrastructure planning and development, yet:

- 88% of cities report concerns about funding their capital facilities plans
- 86% of cities report that a lack of infrastructure funding has a moderate to major impact on their community
- Infrastructure needs are estimated to be more than \$190 billion
- Every \$1 invested in infrastructure generates \$1.50 in economic output



Wastewater
\$4.0 billion
for treatment and conveyance



Water
\$5.3 billion
for drinking water, storage, and agriculture



Stormwater and Natural Resources
\$18.7 billion
for stormwater infrastructure
\$4.6 billion
for fish and habitat





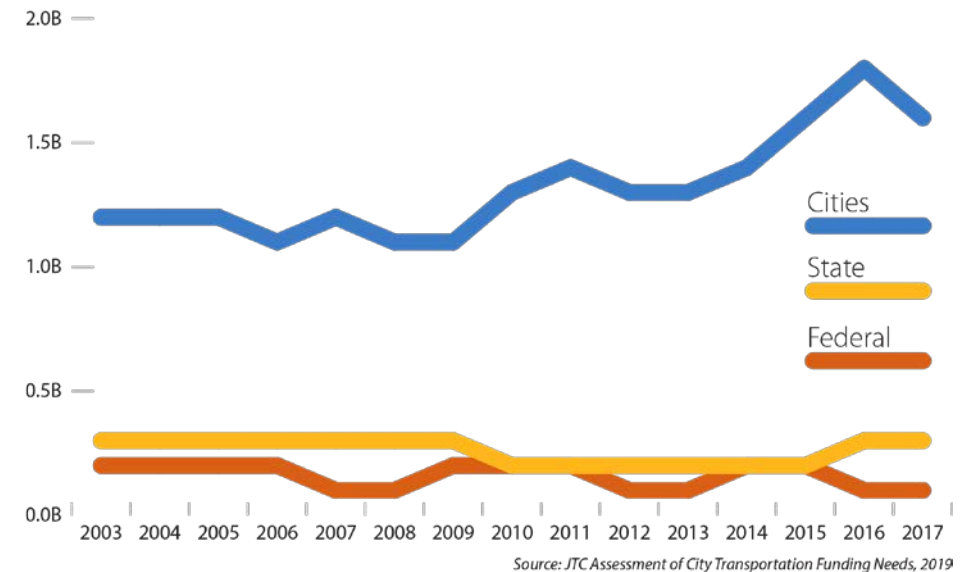
Transportation

Cities own and manage a significant share of our state's transportation system:

- Cities provide nearly 80% of the funding that flows into local transportation systems and have increased spending over the last decade
- 25% of daily trips happen on city streets, yet cities receive only 8% of the state transportation budget
- Cities manage over *35,000 lane miles of streets*, including *740 bridges*—many of which are structurally deficient, functionally obsolete, or over fifty years old.
- Cities are also responsible for multimodal transportation that include streets, sidewalks, bicycle infrastructure, certain aspects of state highway, the spaces between transportation infrastructure, utilities, and the natural environment.

Cities struggle to address the \$1 billion funding shortfall that exists in maintenance and preservation costs. Beyond this \$1 billion gap, there are more than \$900 million in unmet transportation system growth needs.

Cities have stepped up to meet growing transportation needs and costs, while investment from the state and federal governments has declined slightly.





Employee costs

Public employees are key to cities' ability to provide key public services

Staffing costs make up % of city budgets

Key costs are set by the State

Pension rates

LEOFF 2 Since 2013, the LEOFF 2 employer contribution rate has increased by 2.5%

PERS 2 - Since 2012, the PERS employer contribution rate has increased by 82%

Workers compensation rates

Firefighter 36% cumulative 5 year increase

Police officer 39% cumulative 5 year increase

Public works -2% cumulative 5 year decrease

New benefits drive administrative costs

Paid sick leave

Paid Family Medical Leave





Public Records & Indigent Defense

Public Records JLARC Report 2018 Data

Reporting is required for agencies that spend \$100,000+ on public records requests

- \$22.29 million spend on Public Records Requests for the 58 cities that responded
- 122,112 requests received during the reporting period for the 58 cities that responded
- 11 cities reported spending \$1 million on litigation costs during the reporting period

Indigent Defense

- Office for Public Defense estimated public defense expenditures of all cities statewide in 2017: \$40,082,529





Interlocal Cooperation

Areas where interlocal cooperation and interlocal agreements are working:

- Animal services/shelters
- Fire Service
- Court services
- Law enforcement (RCW 10.93 Mutual Aid)
 - general and specialty services
- Jails
- Emergency Communications (911)
- Emergency Medical Services
- Public works/utilities
- Parks and recreation services

AWC's Forming Municipal Partnerships [Handbook](#) (2006)





Interlocal Cooperation

AWC's Forming Municipal Partnerships [Handbook](#) (2006)

