

# GROWING CANNABIS RESEARCH IN WASHINGTON STATE:

## *Progress, Challenges, & Next Steps*

Michael McDonell, PhD

Associate Professor, College of Medicine

Chair, Collaborative for Cannabis Policy, Research, and Outreach

Washington State University



# Collaborative for Cannabis Policy, Research and Outreach (CCPRO)

The CCPRO will be the nexus for cannabis scholarship, policy, outreach and community engagement in Washington State.

## Goals

1. Coordinate and support cannabis research at WSU.
2. Develop cannabis related policy to assure compliance with federal and state laws.
3. Serve as the primary point of contact for interactions with governmental, industry, and other cannabis stakeholders.



# Priority Areas



Improving Health and  
Well Being



Public Policy and Safety



Economics



Agricultural Research

## Awarded I502 Pilot Grants:

- 19 projects funded between FY16–FY19 I502 funding
- Total awards for FY16-FY19: \$473,083

## Awarded External Funding:

- 48 externally funded projects
- Total external funding: \$3,093,466 and growing

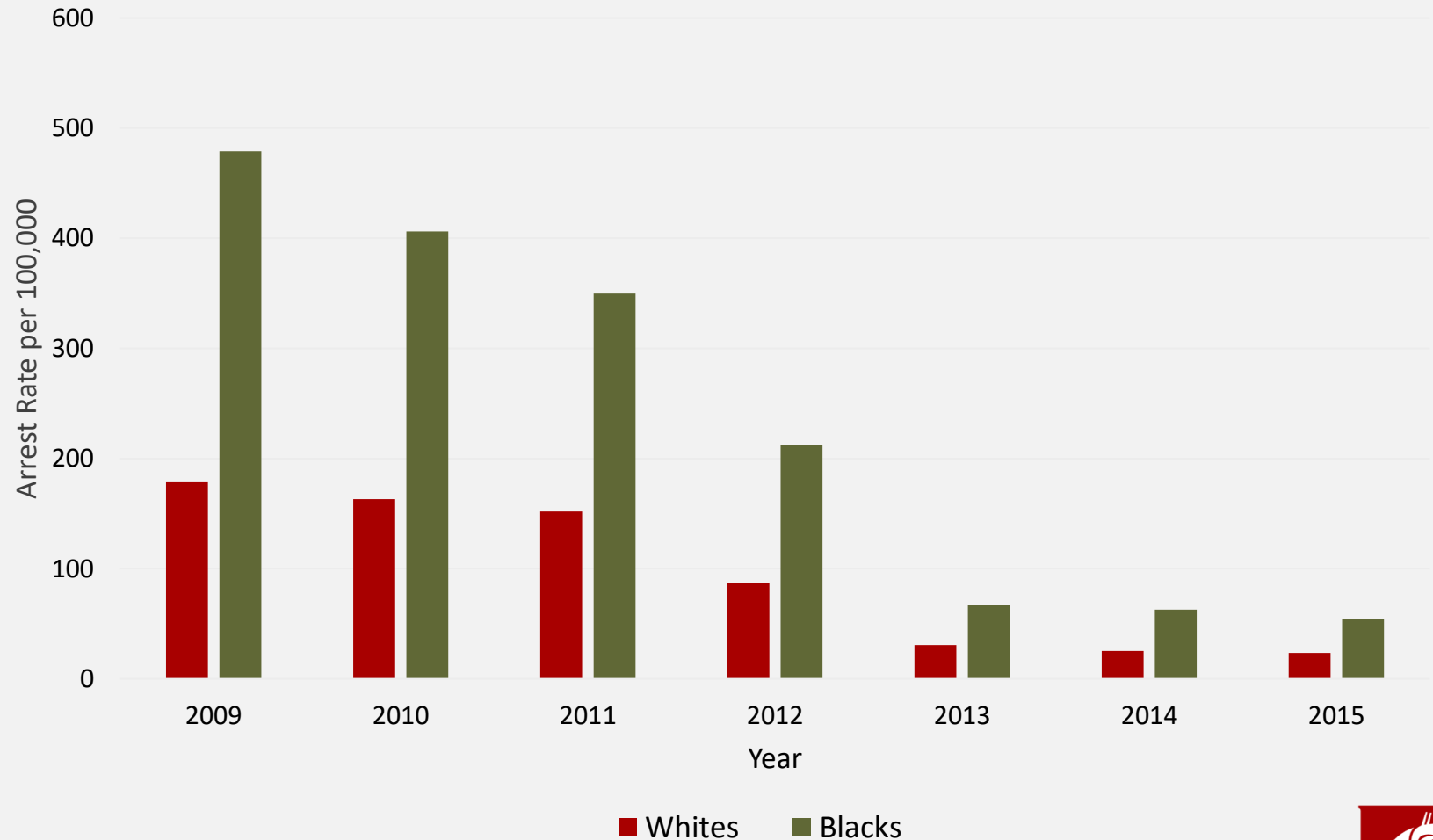
Research  
Funding



# Racial Disparities and Marijuana Crime

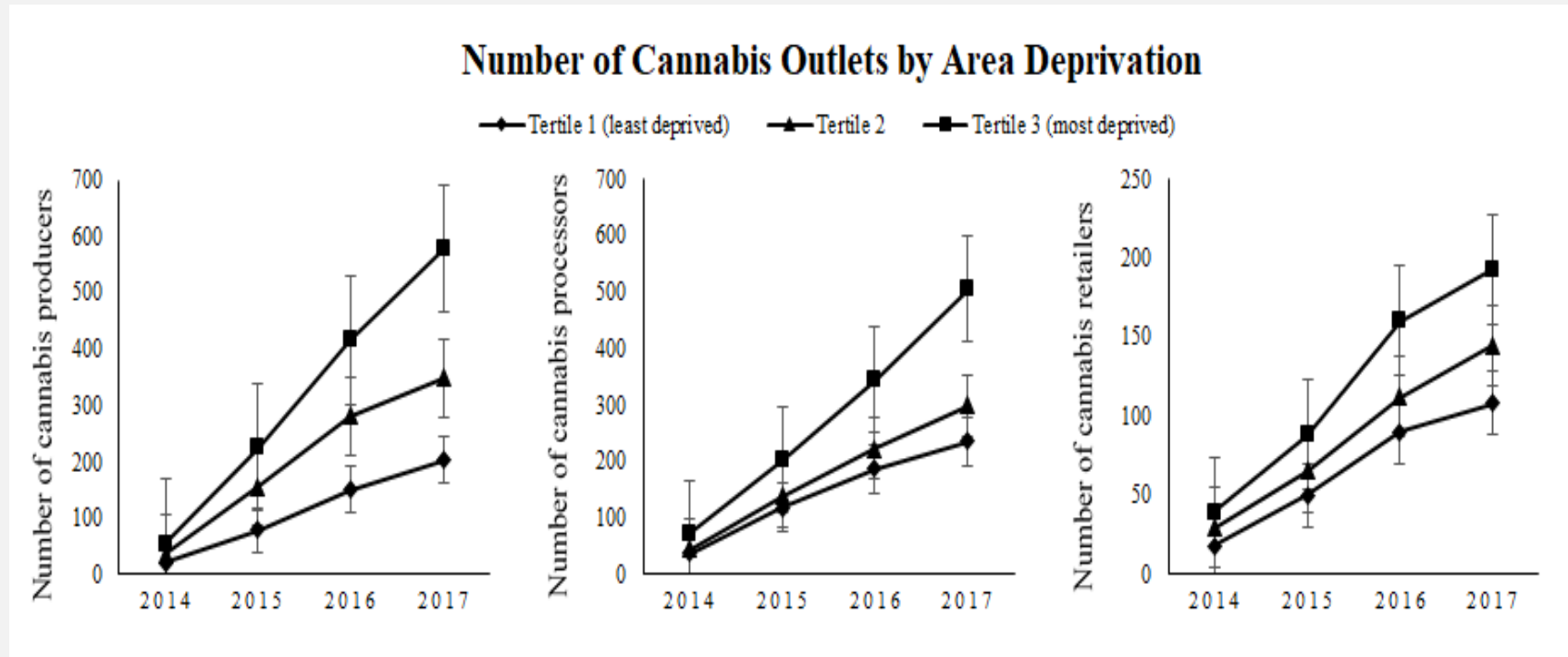
*Dale W. Willits, PhD, David Mankin, PhD, Nick Lovrich, PhD, Mary Stohr, PhD (DOJ Grant)*

## Marijuana Possession Arrest Rates



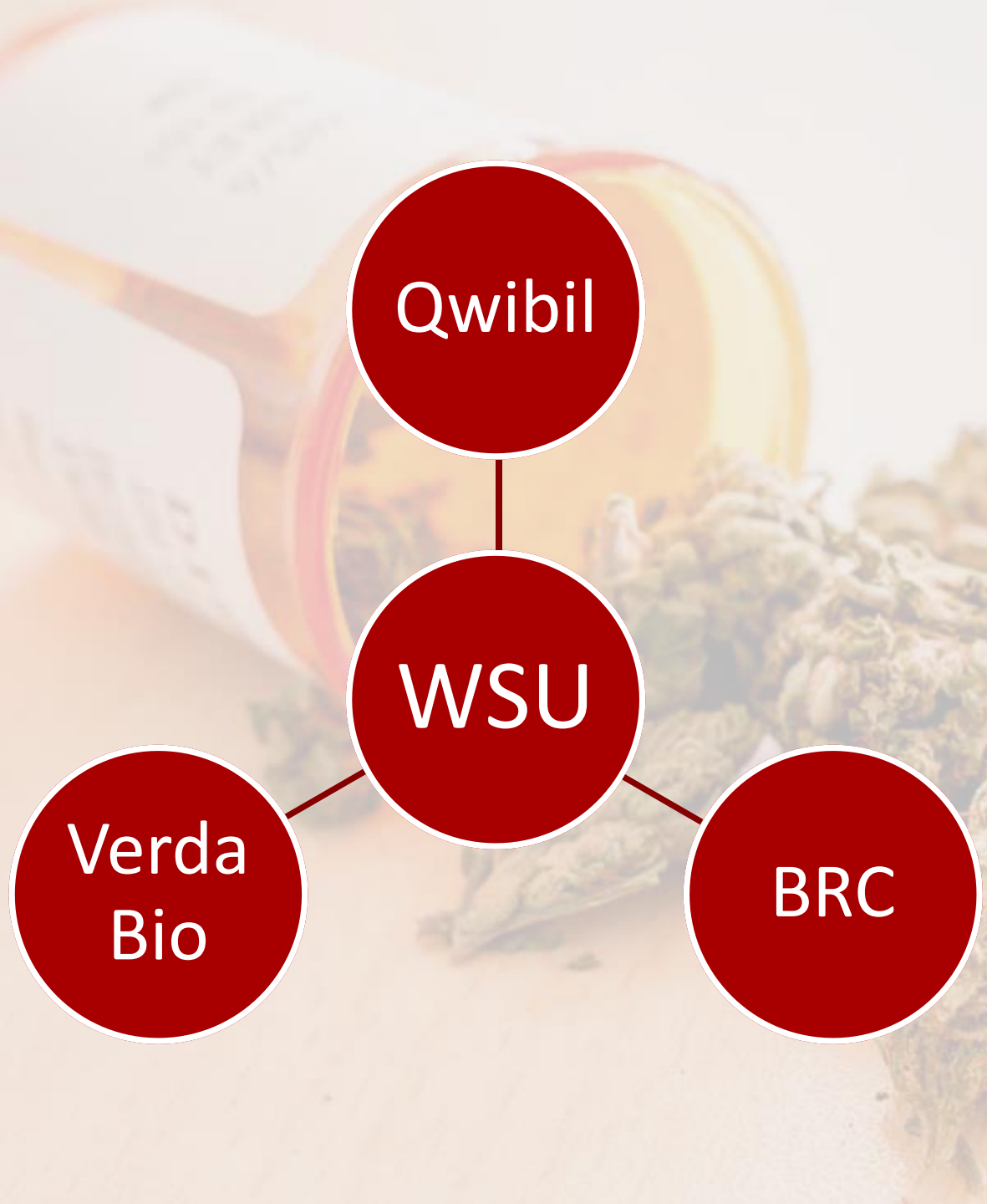
# WA Cannabis Industry & Neighborhood Socioeconomic Characteristics

*Solmaz Amiri, DDes; Pablo Monsivais, PhD, MPH; Michael G. McDonell, PhD; Ofer Amram, MSc, PhD*



Deprived areas have an increased likelihood of licensed cannabis producers, processors, and retailers.





Qwibil

WSU

Verda  
Bio

BRC

# Innovative Collaboration



# We Are Better Together

---

- Close partnerships with
  - *LCB*
  - *WSDA*
  - *DBHR (prevention)*
  - *Intercollegiate*
    - UW- CRC
    - UNR
    - University of Colorado
    - COGR
- Actively engaged with industry

## Outreach and Engagement







Create a  
Cannabis  
Center



Move from  
small scale to  
large scale  
efforts

# Next Steps



## ■ Hemp

- *New hemp plan approved by USDA*
- *Expand CBD research*
- *Novel applications of hemp (e.g., textiles)*

## ■ Marijuana

- *Potency (how much is too much)*
- *Vulnerable populations*
- *Public consumption*
- *Federal regulations that inhibit research*

# Opportunities and Challenges



- State Government Investment Consistent with I-502
- Hemp Plan rules completed and submitted to USDA
- Lifting of federal regulations of marijuana a a schedule 1 drug

What We  
Need  
From You



# Thank You

Michael McDonell, PhD  
Associate Professor, College of Medicine  
Chair, Collaborative for Cannabis Policy, Research, and Outreach  
Washington State University

509-368-6967



mmcdonell@wsu.edu



CCPRO Website: <https://research.wsu.edu/cannabis/>

