

# Workforce Board: At the Intersection of Education and Workforce Issues

Eleni Papadakis

Executive Director, Workforce Board

House Education Committee

January 15, 2019

Workforce Training and  
Education Coordinating Board

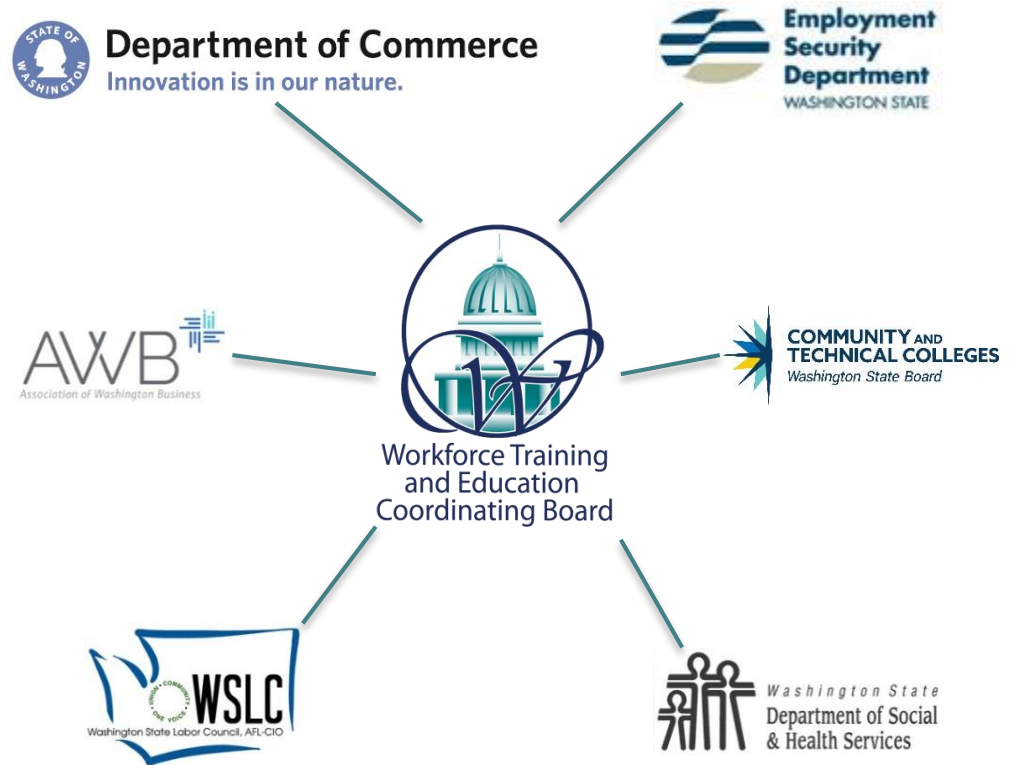




# The Workforce Board—Who we are

**Laser-focused on employment and economic outcomes for workers/jobseekers & employers.**

- Tri-partite; dual-customer focus.
- 2/3 voting seats held by Business and Labor.
- Balance held by major service providers (OSPI, SBCTC, ESD).
- Advisory members from target populations, chief local elected officials, DSHS, Commerce.
- Created by Legislature in 1991.





# The Workforce Board—State statutes

State statutes that shape the Workforce Board and its work:

## **RCW 28C.18.030**

- Advise the Governor and Legislature on workforce policy.
- Performance accountability agent.
- State planning.
- License and regulate private career schools.

## **RCW 28C.18.050**

- Designated as the state's board for vocational education (CTE).
- Performance accountability agent.
- State planning.



# Federal workforce acts, responsibilities

## **Workforce Innovation and Opportunity Act (2014)**

- Help youth connect with education and employment that lead to economic self-sufficiency.

## **Carl D. Perkins Act** (reauthorized in July 2018)

- Hands-on, career-focused education at both the middle and high school level, and career training at state's community and technical colleges.

## **State Approving Agency (SAA)—U.S. Veteran's Affairs**

- Workforce Board is one of the state's two federally designated State Approving Agencies. We approve postsecondary education programs for veterans.



# Career and Technical Education (CTE)

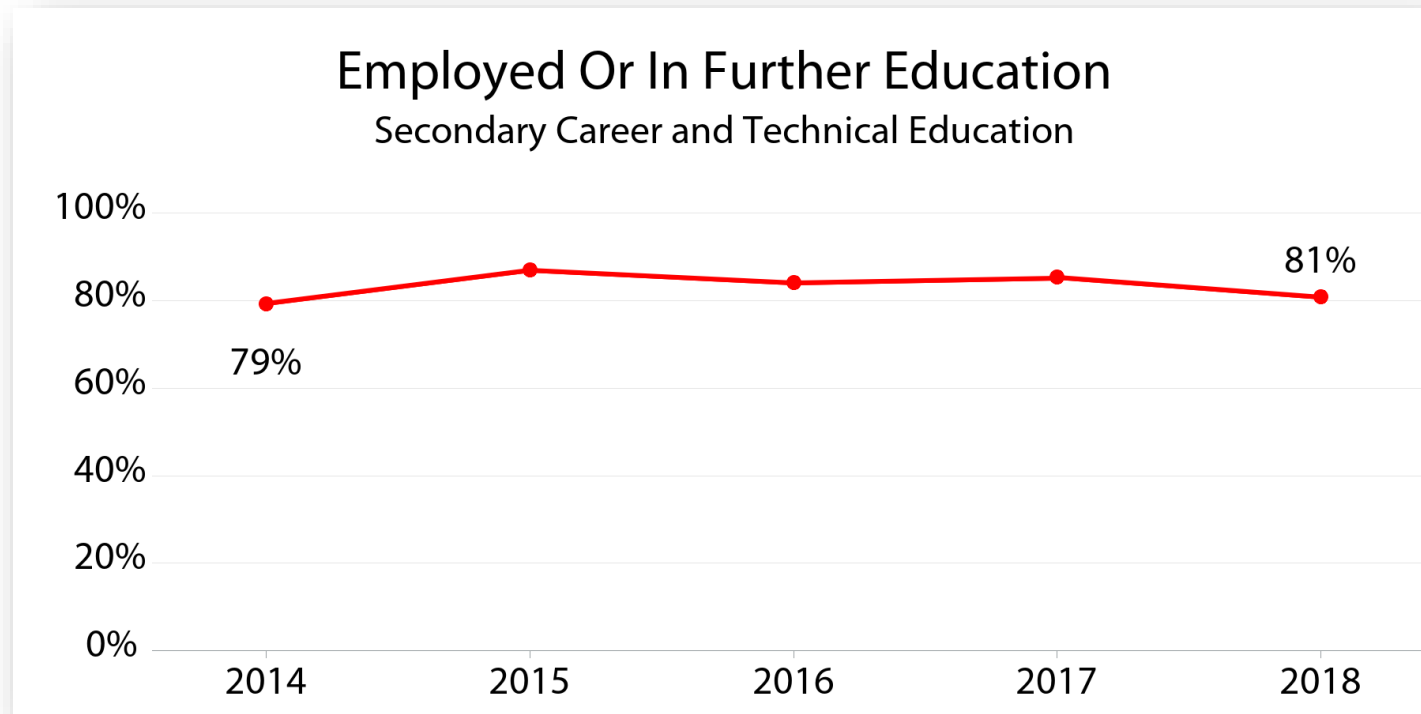
- Currently engaged in the state planning process for implementing the newly updated federal Carl D. Perkins Act, which governs CTE.
- Measure CTE performance at secondary/postsecondary level.
- Promote high-quality CTE, including a 2019 video contest aimed at high school students. (see handout)





# How do Washington CTE students fare?

The Board produces regular reports on workforce program performance, including CTE.



<http://www.wtb.wa.gov/WorkforceTrainingResults.asp>

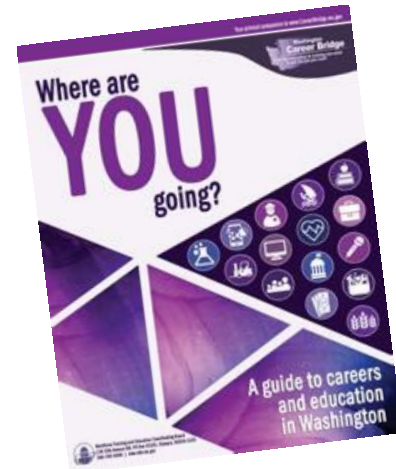


# Career Bridge and Where Are You Going? guides

We create and distribute free resources that help young people make informed education and career decisions.



Features over 6,500 WA education programs—short-term certificates to four-year degrees. Students can identify their interests, explore careers, and view state labor market information. Performance results on employment and earnings of recent graduates.



Career guide used every day by WA middle and high school students to chart their next steps.

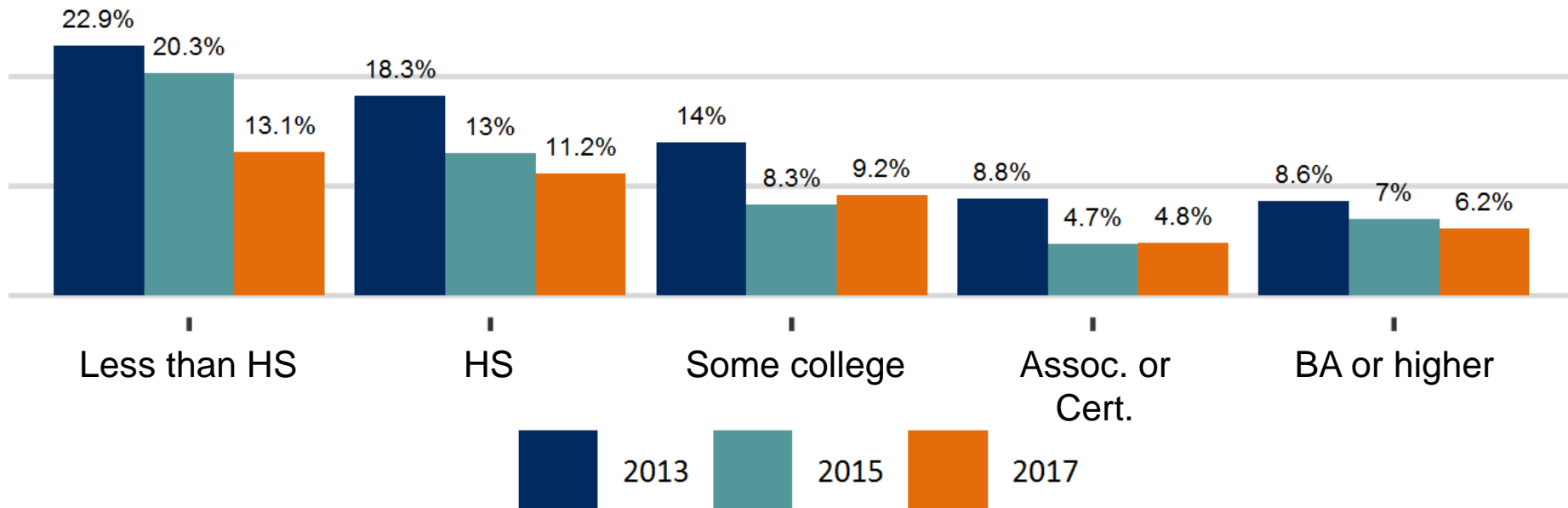


# Multiple pathways to help struggling youth

8

We have a laser focus on youth labor force participation, addressing barriers, and helping all Washington youth achieve economic success.

Washington youth unemployment, 19-24 year olds  
By education and year

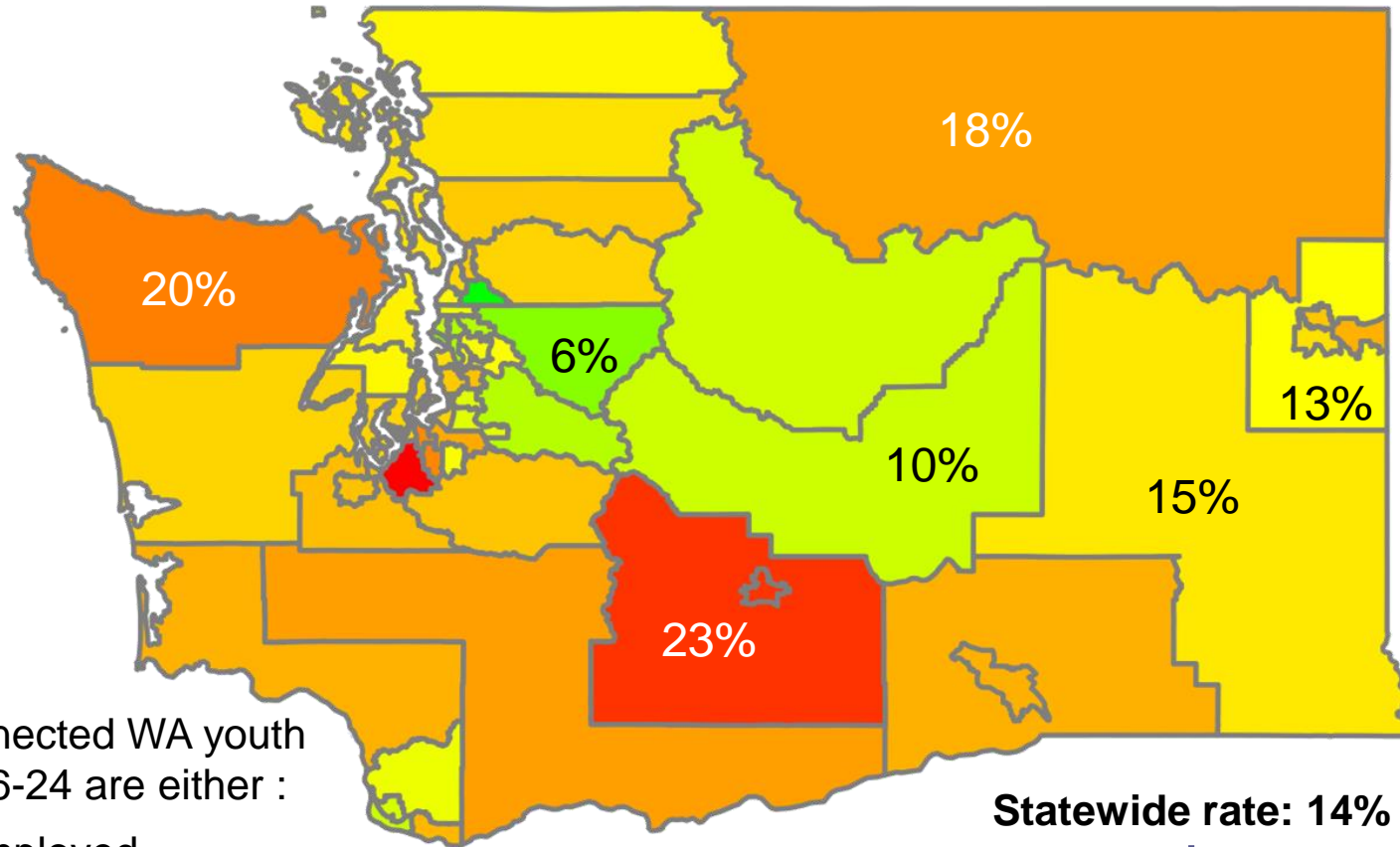


Source: U.S. Census Bureau, analyzed by the Washington Workforce Board





# Disconnected youth in Washington

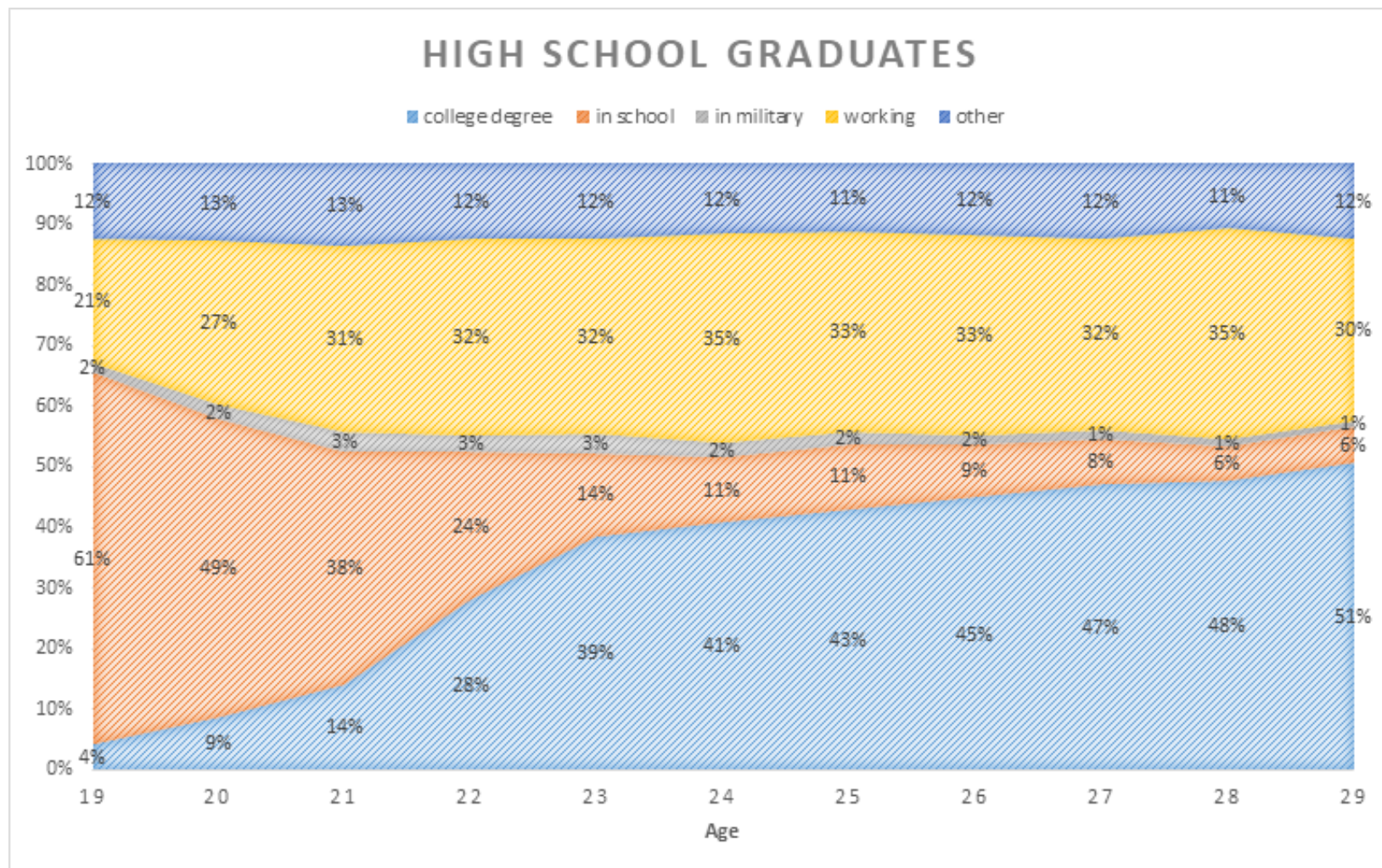


**Total youth:** 116,737

Source: U.S. Census Bureau, 2017, analyzed by the Washington Workforce Board



# WA high school graduates: The first decade



Source: U.S. Census Bureau, 2012-2016, ages 19-29.

# Questions?

Contact Eleni Papadakis at  
[eleni.papadakis@wtb.wa.gov](mailto:eleni.papadakis@wtb.wa.gov)

**Workforce Training and  
Education Coordinating Board**

