



CODIS

(COMBINED DNA INDEX SYSTEM)

Jean Johnston

WSP CODIS Crime Laboratory Manager

WA State CODIS Administrator

COMBINED DNA INDEx SYSTEM

CODIS is a database maintained by the FBI with qualifying DNA profiles submitted by all 50 states, the federal government, the District of Columbia, the U.S. Army Criminal Investigations Lab and Puerto Rico.



Forensic Index

Contains DNA profiles developed from crime scene evidence attributed to the putative perpetrator

Offender Index

Contains DNA profiles of individuals convicted of qualifying offenses. Also contains DNA profiles of arrested individuals where authorized by statute



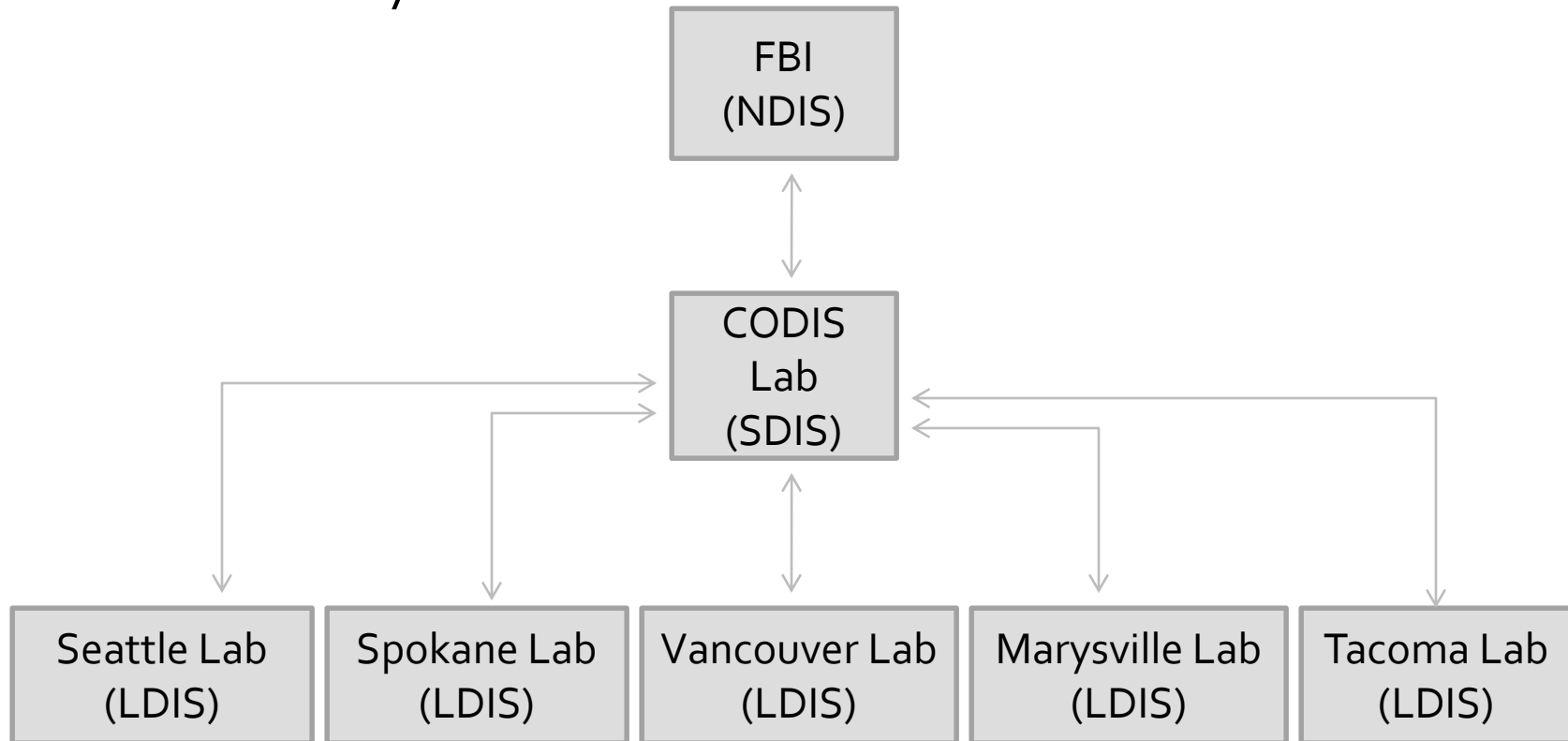
Missing Persons/Unidentified Remains/ Relatives of Missing Persons Indexes

Contains DNA profiles of unidentified remains, missing persons, and relatives of missing persons



LEVELS OF CODIS-COMMUNICATION FLOW

- DNA profiles are entered into the CODIS software and then electronically sent to the next level of CODIS to be searched



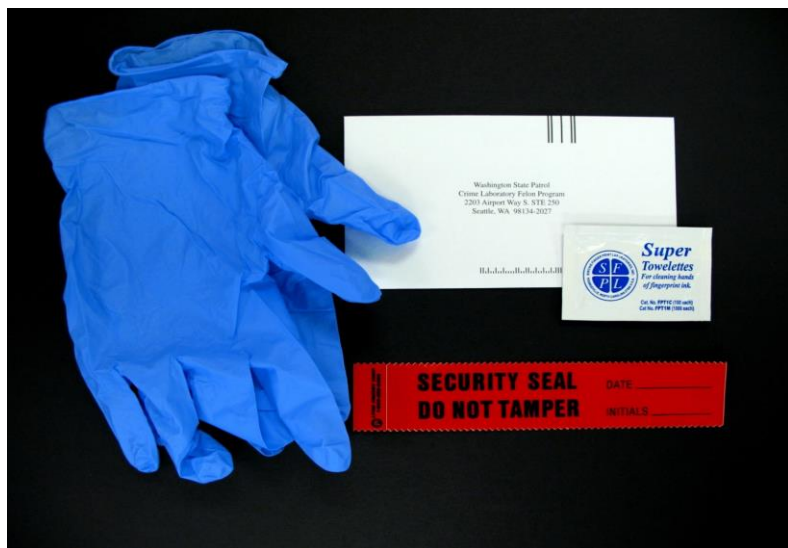
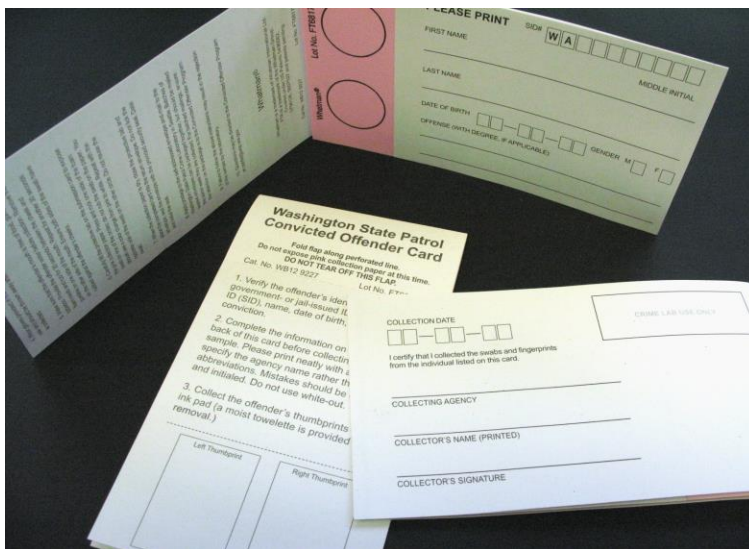
CONVICTED OFFENDER CODIS DATABASE

Samples submitted by prisons, corrections centers, courts, jails, sheriff's offices, and CCOs from individuals convicted of:

- Any felony
- Qualifying gross misdemeanors/misdemeanors:
 - communicating with a minor for immoral purposes
 - violation of a sexual assault protection order
 - stalking
 - harassment
 - patronizing a prostitute
 - assault 4 with sexual motivation
 - custodial misconduct 2
 - sexual misconduct with a minor 2
- Anyone required to register as a sex/kidnapping offender



CONVICTED OFFENDER COLLECTION KIT



- Collection kits -provided at no charge to collecting agencies along with training on sample collection
- Submission card contains:
 - Offender's identifying info
 - Offender's DNA sample & thumbprints
 - Qualifying offense
 - Collector information
- Submitted to CODIS Lab in sealed envelope
- Most samples mailed, occasionally delivered in person or by other shipping carriers

ADMINISTRATIVE PROCESSING



- Currently receive ~1000 samples/month from agencies across the state
- Offender data is reviewed-if acceptable the sample is assigned a unique lab number and entered into the lab's administrative database
- Upon entry, all tracking of samples are by the lab number-no offender names in CODIS
- "Problem" samples are set aside for follow up with the collector (poorly collected DNA or prints, form not completely filled out, etc.)
- Samples with no qualifying offense are destroyed



CRIMINAL HISTORY RECORDS & THE LAB'S ADMINISTRATIVE DATABASE

- Sample is entered into the lab's administrative database using a custom entry form
- Upon entry, a "DNA Taken" notifier on the individual's criminal history changes from "N" to "Y".
- The notifier allows collectors to see if a sample has already been taken for an individual. If so, another sample is not needed.
- Once a sample has been typed, the "DNA Typed" notifier is changed from "N" to "Y". This allows investigators to know if a DNA profile from the offender has been entered into CODIS.

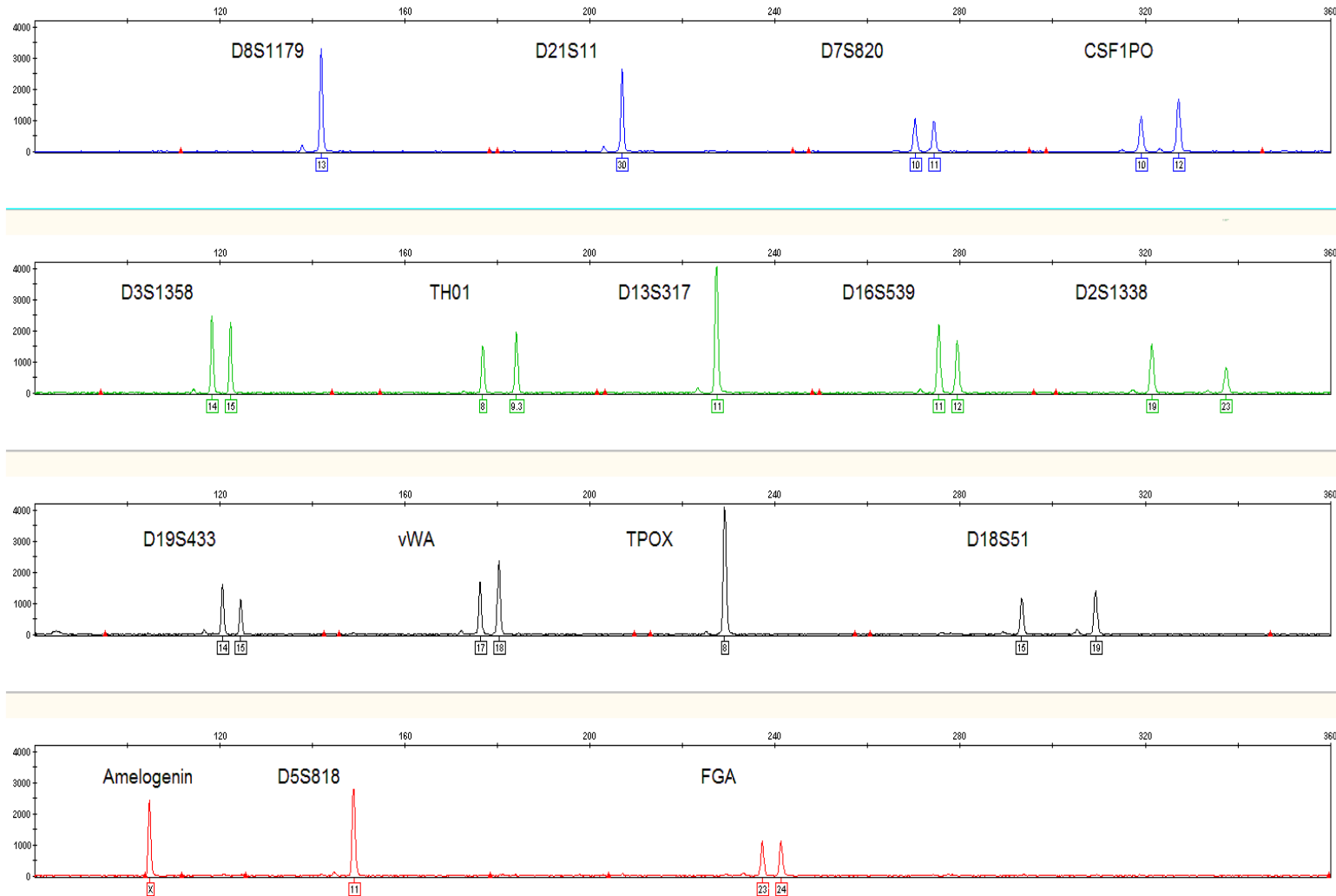


DNA PROFILES ARE GENERATED BY FORENSIC SCIENTISTS USING HIGH-THROUGHPUT INSTRUMENTATION



A DNA PROFILE

D8S1179	13
D21S11	30
D7S820	10, 11
CSF1PO	10, 12
D3S1358	14, 15
TH01	8, 9.3
D13S317	11
D16S539	11, 12
D2S1338	19, 23
D19S433	14, 15
vWA	17, 18
TPOX	8
D18S51	15, 19
Amelogenin	X
D5S818	11
FGA	23, 24



INFORMATION IN THE CONVICTED OFFENDER CODIS DATABASE

- The DNA profile
- The CODIS Laboratory agency identifier
- The unique lab number assigned to the sample upon receipt in the CODIS Laboratory
- The CODIS Laboratory personnel associated with the DNA analysis/processing



INFORMATION LINKAGE-LAB'S ADMINISTRATIVE DATABASE AND CODIS DATABASE

- The information in the lab's administrative database (individual's name, DOB, SID) and the CODIS database (individual's DNA profile) are linked through the unique laboratory number assigned during the initial receipt of a sample.
- No offender DNA profile information is stored in the lab's administrative database.
- No offender names or personal identifiers are stored in the CODIS database.
 - CODIS access is restricted to qualified DNA analysts and IT support staff who have passed a background check by the FBI.



CONVICTED OFFENDER CODIS DATABASE

- Over 252,000 convicted offender samples in WA's database
- Over 14 million offender samples in the national database
- 28 states, Puerto Rico, the FBI and the Department of Defense also enter DNA samples from arrested individuals.



Casework CODIS Database-The Forensic Index



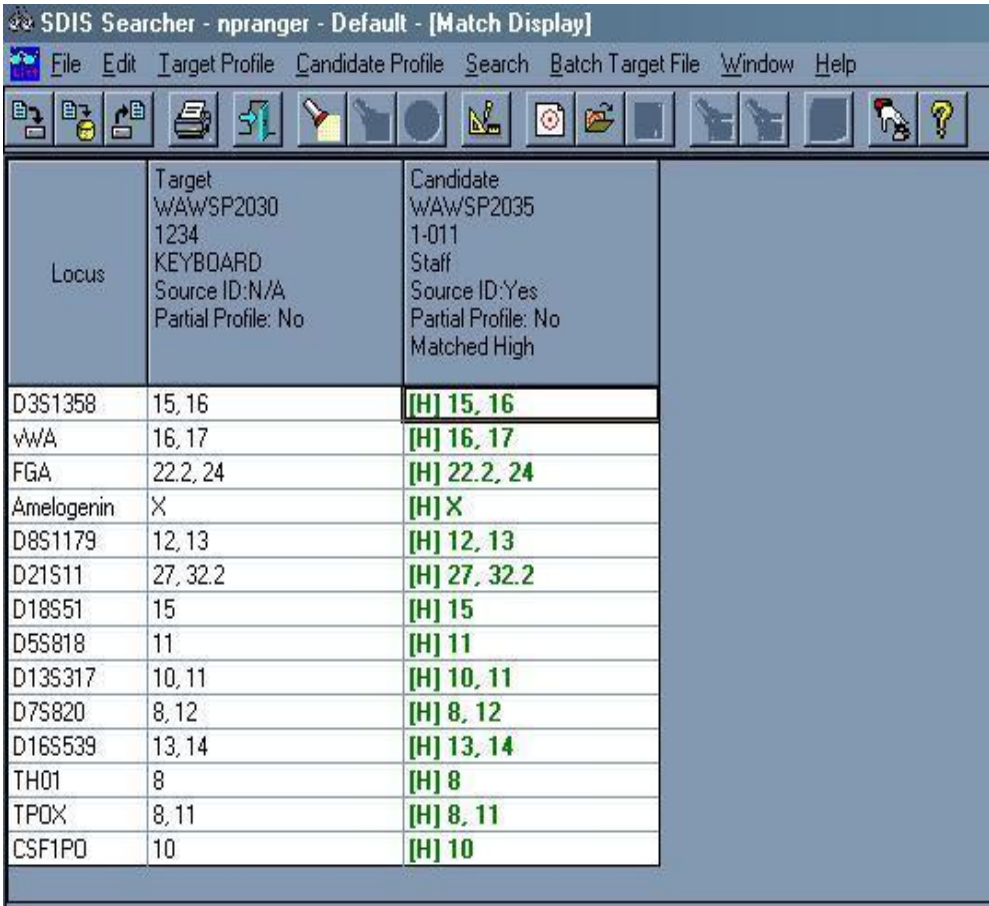
Possible Foreign
Skin Cells or Blood

Common casework evidence-
DNA profiles developed from
biological material on:

- Clothing
- Weapons
- Sexual assault kit swabs
- Cigarette butts
- Licked envelope flap
- Fingernail clippings
- Saliva from kiss on neck
- Ligatures/bindings

OFFENDER AND FORENSIC HITS

- Searches at the state and national levels of CODIS are conducted routinely to find links between DNA profiles
- Offender hit-match between a forensic index profile and an offender profile that aids an investigation
- Forensic hit-match between two forensic index profiles that aids at least one investigation.
- Crime lab reports issued to detectives on all offender and forensic hits for further investigation.



The screenshot shows the 'SDIS Searcher - npranger - Default - [Match Display]' window. It features a menu bar with 'File', 'Edit', 'Target Profile', 'Candidate Profile', 'Search', 'Batch Target File', 'Window', and 'Help'. Below the menu is a toolbar with various icons for file operations and search functions. The main area contains a table comparing a 'Target' profile (wAwSP2030) with a 'Candidate' profile (wAwSP2035). The table lists various loci and their corresponding allele values, with matches highlighted in green.

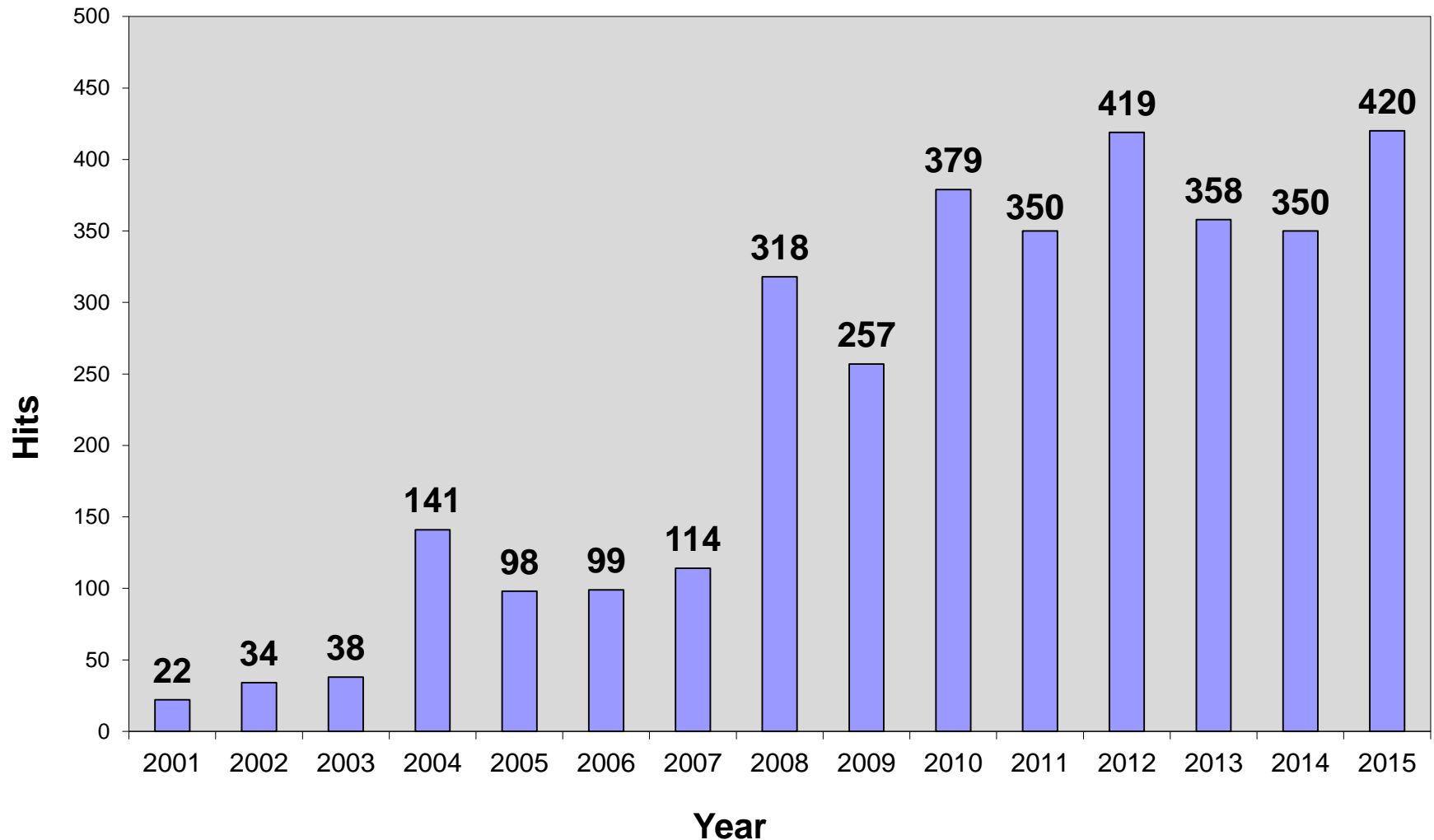
Locus	Target wAwSP2030 1234 KEYBOARD Source ID:N/A Partial Profile: No	Candidate wAwSP2035 1-011 Staff Source ID:Yes Partial Profile: No Matched High
D3S1358	15, 16	[H] 15, 16
vWA	16, 17	[H] 16, 17
FGA	22.2, 24	[H] 22.2, 24
Amelogenin	X	[H] X
D8S1179	12, 13	[H] 12, 13
D21S11	27, 32.2	[H] 27, 32.2
D18S51	15	[H] 15
D5S818	11	[H] 11
D13S317	10, 11	[H] 10, 11
D7S820	8, 12	[H] 8, 12
D16S539	13, 14	[H] 13, 14
TH01	8	[H] 8
TPOX	8, 11	[H] 8, 11
CSF1PO	10	[H] 10

CONVICTED OFFENDER HIT CONFIRMATIONS

- When a casework profile hits to an offender profile, the DNA sample of the offender is re-typed to ensure the same profile results. In addition, thumbprints on the convicted offender submission card are sent to WSP's 10-print unit for confirmation and the qualifying offense is verified.
- The CODIS Lab releases the offender's information to the casework analyst. A report with the identifying information is then provided to the investigator.
- Convicted offender samples are not considered "evidence samples". Therefore, a known reference sample from the offender is requested and typed by the DNA analyst for a direct comparison to the DNA profile from the casework sample.



Yearly CODIS Hits In Washington State



- 3,397 hits in Washington since CODIS using STR technology was implemented in 2001