



Washington State
Department of Transportation

Regional Mobility Grant

Public Transportation Division

4th Quarter 2012 REPORT



SDOT, NW Market/45th St. Transit Improvements

Regional Mobility Grant



Intercity Transit, Hawks Prairie Park and Ride

Contact:
Washington State Department of Transportation
Public Transportation Division
Regional Mobility Grant Program
Mark Eldridge, Manager
310 Maple Park Avenue, PO BOX 47387
Olympia, WA 98504-7387
(360) 705-7273
eldridm@wsdot.wa.gov

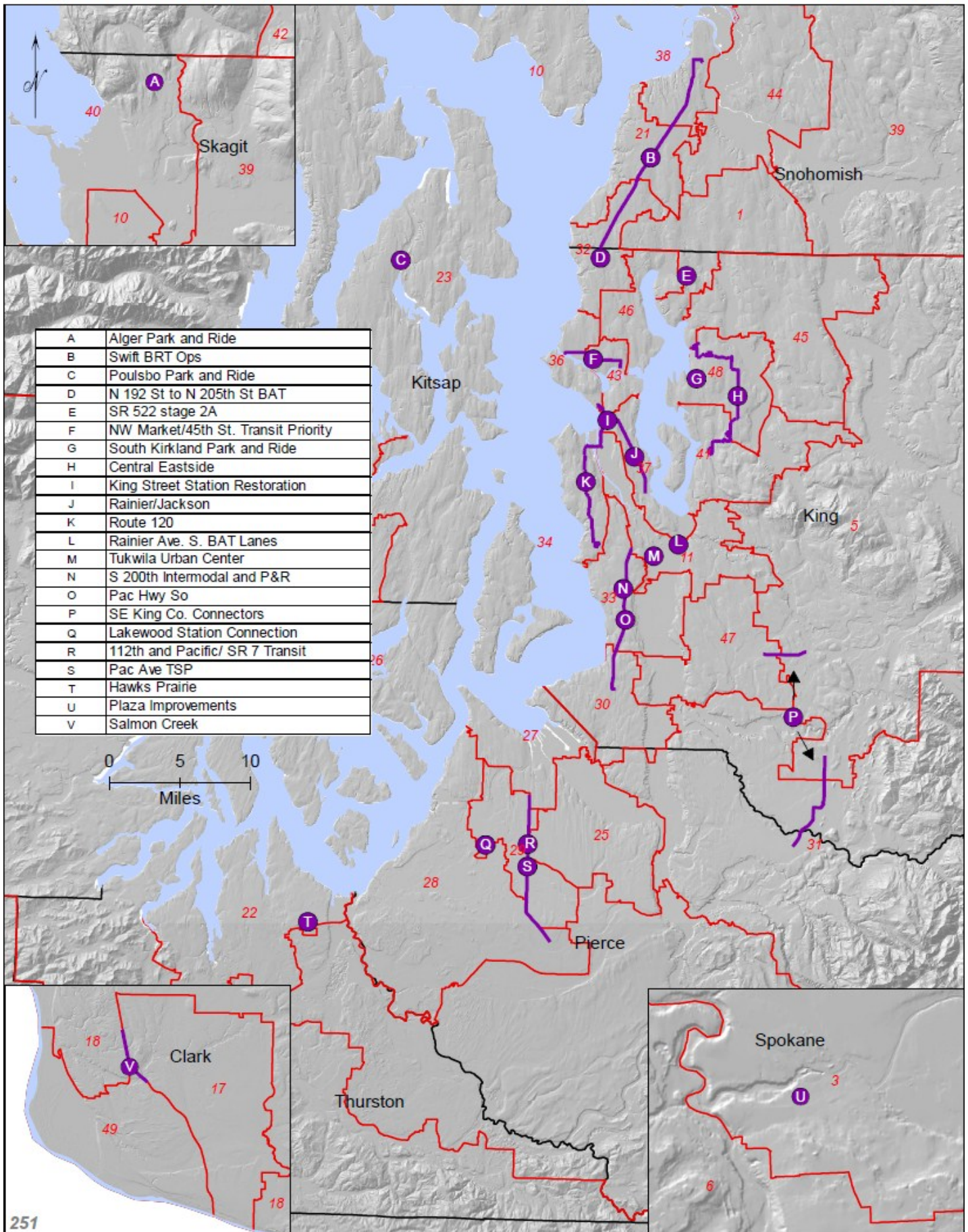
Americans with Disabilities Act (ADA) Information

Materials can be made available in an alternate format by emailing the WSDOT Diversity/ADA Compliance Team at wsdotada@wsdot.wa.gov or by calling toll free, 855-362-4ADA (4232). Persons who are deaf or hard of hearing may make a request by calling the Washington State Relay at 711.

Title VI Notice to Public

It is the Washington State Department of Transportation's (WSDOT) policy to assure that no person shall, on the grounds of race, color, national origin or sex, as provided by Title VI of the Civil Rights Act of 1964, be excluded from participation in, be denied the benefits of, or be otherwise discriminated against under any of its federally funded programs and activities. Any person, who believes his /her Title VI protection has been violated, may file a complaint with WSDOT's Office of Equal Opportunity (OEO). For Title VI complaint forms and advice, please contact OEO's Title VI Coordinator at (360) 705-7082 or (509) 324-6018.

Regional Mobility Grant Recipients by Legislative District, WA



Program Goals

The Regional Mobility Grant program delivers transit mobility projects that are cost-effective, reduce travel delay for people and goods, improve connectivity between counties and regional population centers, and are consistent with local and regional transportation and land use plans. Capital construction, equipment acquisition and operating projects are eligible. Projects are competitively evaluated and a ranked list is submitted to the Legislature for appropriation. The program is funded through the Multimodal Transportation Fund.

The Regional Mobility Grant Program supports Moving Washington by:

Operate Efficiently – Funding projects that maximize the efficient use of existing highway infrastructure by reducing vehicle trips and vehicle miles traveled. These projects will improve transit reliability; reduce operating costs for all using the highway corridor; install traffic signal synchronization; transit signal prioritization, transit queue jumps; and purchase more energy efficient buses.

Manage Demand – Funding projects that provide higher occupancy modes of transportation through new or extended transit routes or increased service frequency.

Strategic Capacity – Adding highway capacity by funding projects reduce congestion on state highway corridors. The program funds capital construction projects such as business and transit lanes, Bus Rapid Transit (BRT), HOV lanes, traffic signal synchronization, highway channelization, bus bulbs, transit centers, new or expanded park and ride lots, higher capacity buses, and new or increased transit service.

The program provides a mechanism for the state to work with local governments to develop and implement solutions that benefit the entire transportation system.



RELIABLE · RESPONSIBLE · SUSTAINABLE
**MOVING
WASHINGTON**

Greenhouse Gas Reduction Plan, Washington State

The Regional Mobility Grant program is helping the state reach its goals of reducing greenhouse gases (GHG) and reduced vehicle miles traveled (VMT) with every new project funded by the Legislature. The types of projects funded by this grant all reduce GHG and VMT. Completed projects and those still under construction will reduce an estimated 254 million VMT and 111.1 metric tons of CO2 annually.

Program News

- All grantees are moving forward with their projects.
- Site visits are conducted on completed projects to verify grantee compliance with the scope of work.
- The 2013-2015 Call for New Projects is complete.
- The recommended project list was delivered to the Legislature in December 2012.

Summary of benefits from the 37 completed or providing service projects from 2006 through December 31, 2012:

Each project has identified performance measures for the investment. Not all projects are represented in each of the performance measures listed below.

Project Results

- 14 park and ride lots constructed or expanded.
- More than 4,700 new park and ride lot parking stalls built.
- Six new or expanded transit centers.
- Eight HOV and business access and transit lane projects.
- 11 equipment and/or operating new or expanded transit service.
- Five Transit Signal Prioritization (TSP) projects.
- 1.2 miles of fixed guide way, railroad track.
- 42 new buses purchased.

Performance Measures

- An estimated 206.2 million mile annual reduction in VMT.
- An estimated 10.1 million annual reduction in vehicle trips.
- Four projects saving over 1.2 million hours annually in travel delays.
- An estimated 90.2 metric tons of CO2 reduced annually.

Projected benefits from the 20 in-progress projects:

- Five park and ride lots under construction or expansion with 1,525 new parking stalls.
- Seven HOV and business access and transit lanes projects.
- Six new or improved transit centers.
- Two new or extended bus routes.
- Five projects improving speed and reliability through transit signal prioritization.

Performance Measures

- An estimated 47.8 million miles annual reduction in VMT.
- An estimated 3.8 million annual reduction in vehicle trips.
- One project reducing an estimated 34,300 hours in travel delays annually.
- An estimated 20.9 metric tons of CO2 reduced annually.

In 2006, the Washington State Legislature adopted a list of 14 projects.

- 13 projects are complete.
- One project was cancelled.

In 2007, the Legislature adopted a list of 16 new projects.

- 12 projects are complete.
- Three projects were cancelled.
- One project under construction. (GCA 6114) In-progress projects are listed on page 4

In 2009, the Legislature adopted a list of 14 new projects.

- Ten projects are complete. (GCA 6121, 6122, 6123, 6124, 6126, 6127, 6128, 6129, 6130, 6131)
- Two projects are providing new service. (GCA 6119, 6120)
- One project was cancelled.
- One projects are under construction. (GCA 6125) In-progress projects are listed on page 4

In 2010, the Legislature appropriated \$10,596,768 (ESSB 6381SL) to fund the following contingency list projects:

- City of Seattle, Rainier /Jackson Transit Priority Corridor Improvements. (GCA 6507) In-process
- City of Bothell, SR 522 West City Limits to NE 180th Stage 2A. (91st Ave. NE to West of 96th Ave NE) (GCA 6509) In-process
- Sound Transit, Sound Transit Express Bus Expansion – Snohomish to King County. (GCA 6508) Complete

Projects funded with existing program resources and new appropriations:

- King County Metro, Southeast King County Connectors project in-process. (GCA 6395/6)
- King County Metro, Route 120 project in-process. (GCA 6648)

In 2011, the Legislature adopted a list of 11 new projects. One additional project was funded from the contingency list:

- One project is complete. (GCA 6762)
- All 11 projects are under construction. (GCA 6755, 6756, 6757, 6758, 6759, 6760, 6761, 6763, 6764, 6765, 6877)



City of Lakewood, Lakewood Station Connection

Completed projects for the period 2006 through December 31, 2012

Biennium Cycle	Lead Agency Project Title	State Funded Amount	Total Project Cost
05-07	Ben Franklin Transit (GCA 4936) Columbia Park Trail Park and Ride Lot Expansion	\$300,000	\$942,936
05-07	City of Federal Way (GCA 4928) Pac Hwy So HOV Lanes Phase III, South 284th St. to Dash Point Rd	\$1,214,000	\$18,757,000
05-07	City of Lakewood (GCA 4929) Lakewood Commuter Rail Station	\$2,700,000	\$42,360,000
05-07	City of West Richland (GCA 4930) West Richland Transit Center Park and Ride Expansion	\$134,100	\$164,000
05-07	Clark County and C-Tran (GCA 4931) 99th Street Park and Ride Implementation	\$600,000	\$13,200,000
05-07	Community Transit (GCA 4944) I-5 Commuter Bus Expansion Project	\$2,912,000	\$4,160,000
05-07	Community Transit (GCA 4932) Mountlake Terrace I-5 Commuter Parking (I-5 at 236th Street SW)	\$1,740,262	\$17,529,000
05-07	King County Metro (GCA 4939) SeaTac Connector (Operations phase) The construction phase was canceled, so these numbers reflect the change in scope	\$750,000	\$3,457,000
05-07	Intercity Transit (GCA 6106) Martin Way Park and Ride Lot Renovation and Expansion	\$1,259,360	\$2,480,200
05-07	Skagit Transit / Island Transit (GCA T4940AA & T4940AB) Everett Connector Service - Phase I and the purchase of 2 buses	\$1,970,000	\$2,740,000
05-07	Skamania County (GCA 4938) Salmon Falls Park and Ride	\$297,500	\$425,000
05-07	King County Metro (GCA 6109) North I-405 Transit Access Project - Brickyard Park and Ride	\$2,000,000	\$4,242,990
05-07	King County Metro (GCA 6107) Seattle North CBD Transit Access Improvements, Stewart St/Olive Way & Virginia/Fairview Corridors	\$1,800,000	\$2,120,000
07-09	Community Transit (GCA 5257) Swift Bus Rapid Transit (BRT) Transit Stations	\$2,383,001	\$27,644,189
07-09	C-Tran (GCA 5402) I-5 Commuter Service Augmentation	\$590,000	\$759,000
07-09	Link Transit (GCA 5262) North Wenatchee Park and Ride	\$752,400	\$836,000
07-09	City of Kenmore (GCA 5260) SR 522 Multi-Modal Corridor Project - Phase II	\$1,800,000	\$23,112,168
07-09	Skagit Transit / Island Transit (GCA T4940aa & T4940ab) Commuter Express Connector Service to Everett Station Phase II	\$1,440,000	\$1,600,000
07-09	Kitsap Transit (GCA 6115) Harper Park and Ride	\$2,400,000	\$6,936,865
07-09	Sound Transit (GCA 6110) Construct Mountlake Terrace Freeway Station	\$5,000,000	\$30,545,000
07-09	Everett Transit (GCA 6116) Swift Bus Rapid Transit - Northern Terminal at Everett Station	\$1,989,823	\$2,235,756
07-09	City of Shoreline (GCA 6113) Aurora BAT 165-185	\$2,500,000	\$42,804,000
07-09	Sound Transit (GCA 6112) Expand Commuter Rail Parking Tacoma-Seattle Corridor	\$3,700,000	\$4,200,000
07-09	City of Seattle (GCA 6118) Pine / Westlake Hub Regional Transit Corridor Improvements Pike	\$3,230,000	\$3,650,000
07-09	Skagit Transit (GCA 6117) Chuckanut Park and Ride	\$2,000,000	\$5,200,000
09-11	Sound Transit (GCA 6508) Sound Transit Express Bus Expansion - Snohomish to King County Service Improvement	\$4,496,768	\$8,348,109
09-11	Skagit Transit (GCA 6126) South Mount Vernon Park and Ride	\$750,000	\$5,253,000
09-11	Community Transit (GCA 6121) Double Decker Buses	\$2,880,000	\$19,204,000
09-11	C-Tran (GCA 6128) I-5 Express Commuter Service Augmentation (continuation)	\$578,496	\$784,996
09-11	Island Transit (GCA 6131) The Everett Connector	\$1,624,000	\$2,030,000
09-11	Clark County (GCA 6124) Salmon Creek Interchange Park-and-Ride and Traffic Signal Coordination	\$3,400,000	\$8,700,000
09-11	City of Federal Way (GCA 6130) Pacific Highway South HOV Lanes Phase IV (South 312th Street to Dash Point Road)	\$1,300,000	\$21,280,000
09-11	Pierce Transit (GCA 6127) Pacific Avenue Corridor Transit Signal Priority (TSP)	\$1,803,650	\$4,359,650
09-11	Everett Transit (GCA 6129) Evergreen Swift Stations and TSP	\$3,630,000	\$4,537,000
09-11	Sound Transit (GCA 6122) Lakewood-Tacoma Commuter Rail (D to M Street Track and Signal)	\$8,000,000	\$151,000,000
09-11	City of Shoreline (GCA 6123) Aurora BAT 185-192	\$1,000,000	\$9,221,000
11-13	SDOT (GCA 6762) NW Market/45th St. Transit Priority	\$4,000,000	\$8,870,600
Completed Projects Combined Biennia Total		\$78,925,360	\$505,689,459

In-process projects as of December 31, 2012

Biennium Cycle	Agency Project Title	Total State funded Amount	Total Spent	Remaining State Funds
07-09	King County Metro (GCA 6114) Pacific Highway South Transit Speed and Reliability Improvements	\$2,300,000	\$2,151,920	\$148,080
09-11	Intercity Transit (GCA 6125) Hawks Prairie Park and Ride Lot	\$6,565,676	\$5,932,983	\$632,693
09-11	City of Seattle (GCA 6507) Rainier/Jackson Transit Priority Corridor Improvements Service Improvement	\$4,000,000	\$2,550,921	\$1,449,079
09-11	City of Bothell (GCA 6509) SR 522 West City Limits to NE 180th Stage 2 A	\$2,100,000	\$455,697	\$1,644,303
09-11	King County Metro (GCA 6648) Route 120 Transit Enhancements	\$2,233,000	\$140,099	\$2,092,901
09-11	King County Metro GCA 6395 and 6396) Southeast King County connector Service Improvement	\$5,024,560	\$1,303,690	\$3,720,870
09-11	Community Transit (GCA 6119) Providing service Swify Bus Rapid Transit Operations	\$5,000,000	\$4,589,282	\$410,719
09-11	King County Metro (GCA 6120) Providing service Central Eastside Transit Service Improvements	\$3,913,187	\$1,836,229	\$2,076,958
11-13	City of Lakewood (GCA 6755) Lakewood Station Connection	\$3,000,000	\$2,090,873	\$909,127
11-13	City of Renton (GCA 6756) Rainier Ave. S. Bus Access Transit Lanes	\$1,500,000	\$1,027,248	\$472,752
11-13	City of Shoreline (GCA6757) N 192nd St to N 205th St BAT Lanes	\$5,507,839	\$3,943,826	\$1,564,013
11-13	City of Tukwila (GCA 6758) Tukwila Urban Center	\$3,900,000	\$33,070	\$3,866,930
11-13	King County Metro (GCA 6759) South Kirkland Park and Ride	\$485,000	\$0	\$485,000
11-13	Kitsap Transit (GCA 6760) Poulsbo SR 305/3 Park and Ride	\$1,900,000	\$29,582	\$1,870,418
11-13	Pierce Transit (GCA 6761) 112th and Pacific/SR 7 Transit Access Improvements	\$700,883	\$1,338	\$699,545
11-13	Seattle DOT (GCA 6763) King Street Station Restoration Project	\$1,250,000	\$95,823	\$1,154,177
11-13	Sound Transit (GCA 6764) S 200th Intermodal Station and park and ride	\$3,600,000	\$0	\$3,600,000
11-13	Spokane Transit (GCA 6765) Plaza Improvements - Wall Street Reconfiguration	\$1,352,000	\$500,199	\$851,801
11-13	Skagit Transit (GCA 6877) Alger Park and ride	\$1,198,350	\$100,644	\$1,097,706
Totals		\$55,530,495	\$26,783,425	\$28,747,070

Regional Mobility 2011-2013 Budget

Reappropriated funds for In-Progress 2007-2011 Biennium Projects	\$8,942,000
Appropriated funds for new 2011-2013 Biennium Projects	\$40,000,000
Total Funding for the 2009-2011 Biennium	\$48,942,000
Less In-progress and New Project Obligated Costs for the 2011-2013 Biennium	-\$48,278,697
Fund Balance	\$663,303

Cancelled Projects

Biennium Cycle	Lead Agency Project Title
05-07	King County Metro (GCA 4946) Sea-Tac Airport Connector Service (Construction phase)
05-07	Pierce Transit Peninsula Park and Ride Project Phase I
07-09	City of Renton / City of Tukwila Tukwila Station
07-09	Pierce Transit Peninsula Park and Ride Project Phase II Median In-line Transit Station
07-09	Spokane Transit Mission and Greene Community Transit Center
09-11	Pierce Transit SR-7 Pacific Avenue Express Service



Community Transit, Swift Bus Operations

Projects from map on page 3

	<p>SKAGIT TRANSIT, ALGER PARK AND RIDE</p>	<p>A</p>
<p>Legislative District: 40</p>		
<p>Project Description: The project will consist of a minimum of 45 parking stalls, asphalt parking lot with lighting and security cameras. Skagit Transit prioritized public safety when choosing the preferred design layouts of the facility, adding a sense of security in the use of the rural park and ride. GCA 6877</p>		
	<p>COMMUNITY TRANSIT, SWIFT BUS OPERATIONS</p>	<p>B</p>
<p>Legislative Districts: 21, 32, 38</p>		
<p>Project Description: Grant funds are being used to operate Swift Bus Rapid Transit service on a 16.7 mile route on SR 99 connecting Everett Station and Aurora Village Transit Center. Swift complements existing route #101 service with a minimum of 196 additional daily round trips on weekdays and a minimum of 110 additional daily round trips on weekends (Saturdays only after June 13, 2010). GCA 6119</p>		
	<p>KITSAP TRANSIT, POULSBO PARK AND RIDE</p>	<p>C</p>
<p>Legislative District: 23</p>		
<p>Project Description: Kitsap Transit is developing a medium-sized park and ride in Poulsbo, Kitsap County, near the intersection of SR3 and SR305 to serve the northern termini of the SR305 corridor, the Bainbridge ferry terminal and the Olhava Master Plan Development with Olympic College campus and south Viking Way redevelopment zone. GCA 6760</p>		
	<p>CITY OF SHORELINE, N. 192ND TO N. 205TH STREET BAT</p>	<p>D</p>
<p>Legislative District: 32</p>		
<p>Project Description: This project includes business access and transit lanes, synchronized traffic signals, bus shelters, and lighting. The project creates 4 north-south general purpose travel lanes and 2 BAT lanes increasing the safety and mobility of the corridor. These improvements will reduce accidents, increase transit use, and reduce signal delay. This project supports King County Metro's Rapid Ride E Line, on Aurora Shoreline and downtown Seattle and links to Swift BRT. GCA 6757</p>		



CITY OF BOTHELL, SR 522 STAGE 2A	E
Legislative District: 1	
Project Description: The Stage 2A project extends the transit lane in the westbound direction from 96th Avenue NE, widens the through lanes and adds a raised median. The transit lane extension allows buses to bypass the queues in the general purpose lanes from the 96th Avenue NE signal and transitions transit traffic smoothly into the general purpose lanes. This project will reduce transit travel times and, leverages the corridor investments made in Kenmore for transit. <small>GCA 6509</small>	



SDOT, NW MARKET/45TH ST. TRANSIT PRIORITY	F
Legislative District: 43	
Project Description: Construct bus priority treatments to include: Bus lane and queue jumps, rechanneled intersection, upgraded signal controllers, signal phasing, sidewalk extensions (bus bulbs), waiting space, bike racks, lighting, shelters, trash cans, install fiber optic intelligent transportation system infrastructure, add transit service hours to routes 44, 48, 70, and includes a marketing campaign. <small>GCA 6762</small>	



KING CO. METRO, S. KIRKLAND PARK AND RIDE	G
Legislative District: 48	
Project Description: The transit center and park and ride is the focal point for new travel options across the 520 bridge. Current transit connections at the site are inadequate for the increased demand from the Park and Ride and the neighborhood. Local transit providers intend to increase service through the site including increased frequency and new destinations. Increased transit service will also require additional loading and layover zones. Adding 250 parking stalls and housing can increase ridership on the corridor by almost 10% during the am peak at very low public cost. <small>GCA 6759</small>	



KING CO. METRO, CENTRAL EASTSIDE	H
Legislative Districts 41, 48	
Project Description: Grant funds add 32 one-way trips to the Route 245 (Factoria, Crossroads, east Bellevue, Overlake and east Kirkland) schedule, increasing frequencies from two to at least four trips per hour during portions of the peak and mid-day travel periods, and supports incentives for Route 245, connecting routes and related trip reduction programs and services, started in September 2009 and goes through June 30, 2013. <small>GCA 6120</small>	



SDOT, KING STREET STATION RESTORATION	I
Legislative District: 37	
<p>Project Description: This project ties together a larger station restoration that will attract new riders to intercity rail. It adds new, direct access to station ticketing, waiting and boarding areas. The elevator access point is critical for customers with disabilities. This project reconnects a second floor entrance with the first floor ticketing and boarding areas. The project also activates the north face of the station, closely tying the station to other transit modes. GCA 6763</p>	



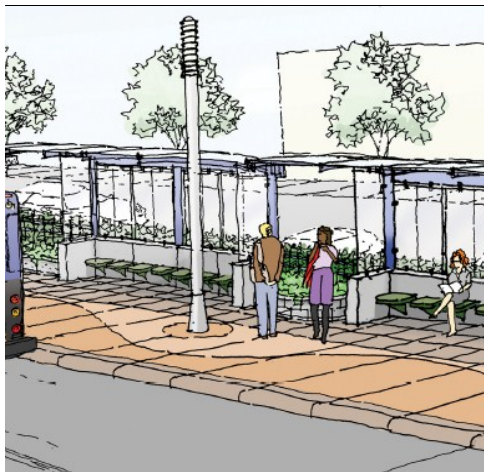



CITY OF SEATTLE, RAINIER/JACKSON	J
Legislative District: 37	
<p>Project Description: This project:</p> <ul style="list-style-type: none"> • Adds queue jumps at key intersections to allow buses a head start when the light turns green • Builds sidewalk extension (bus bulbs) • Augments the improvements on Rainier Ave, and installs new traffic signals to improve the pedestrian environment. <p>GCA 6705</p>	


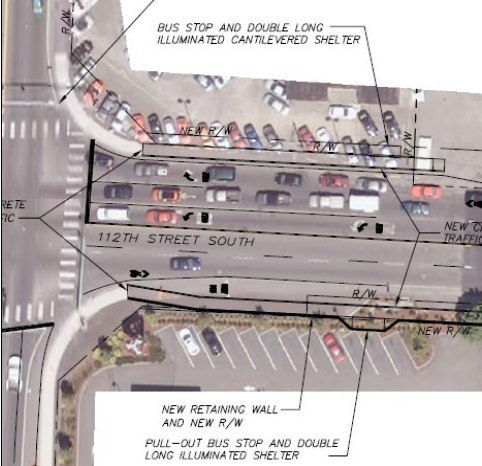




KING CO. METRO, ROUTE 120	K
Legislative Districts: 11, 34, 37, 43	
<p>Project Description: Route 120 Transit Enhancement for Delridge Way/Ambaum Blvd Corridor comprises of a series of capital improvements along the corridor. This project improves the speed and reliability along Route 120, a core route connecting Burien via Ambaum Boulevard, White Center, Delridge Way, and Downtown Seattle via the West Seattle Bridge and SR 99. GCA 6648</p>	



CITY OF RENTON, RAINIER AVE. S. BAT LANES	L
Legislative District: 11	
<p>Project Description: The project installs business access and transit lanes, which improves transit mobility, reliability and service. Wider sidewalks, ADA ramps, illumination, bus shelters, consolidating driveways. Overall traffic flow and safety improves through access management and traffic signal upgrades and coordination, reducing accidents. The project improves access and mobility between Renton and connections to regional transportation facilities of I-405, SR 167, SR 900, SR 515, and the Tukwila Sounder Station. GCA 6756</p>	

	CITY OF TUKWILA, TUKWILA URBAN CENTER	M
Legislative District: 11		
Project Description: The Tukwila Transit Center project eliminates transit inefficiencies, safety problems and expand and replace the existing, inadequate transit stops located at the intersection of Andover Park West and Baker Boulevard.		
 <p>Existing surface 'Park and Fly' lot to be used for structured station parking</p>	SOUND TRANSIT, S. 200TH INTERMODAL STATION	N
Legislative District: 33		
Project Description: This project builds the new S 200 th Street Intermodal Station and 700- to 1,100-stall Park & Ride facilities in the City of SeaTac. GCA 6764		
	KING CO. METRO, PACIFIC HIGHWAY SOUTH	O
Legislative Districts: 30, 33		
Project Description: Grant funds are being used on Pacific Highway South from S. 154th Street to South 316th Street to design and install transit signal priority systems, including signal equipment at signalized intersections, WiFi and fiber communication for the length of the corridor, ITS cabinets, replacement signal controllers and system testing and acceptance. GCA 6114		
	KING CO. METRO, SOUTHEAST CONNECTORS	P
Legislative Districts: 5, 31, 47		
<ul style="list-style-type: none"> • Project Description: • Install pullout and landing pad at one new and one existing stop • Extend pullout and add landing pad at two new bus stops • Install a landing pad only at one new and two existing bus stops • Install a landing pad with shelter footing at one bus stop • Increase Metro Route 164 service frequency to every 30 minutes • Extend Metro Route 168 east from Covington to Maple Valley and increase service frequency to every 30 minutes GCA 6395/6 		

	CITY OF LAKEWOOD, STATION CONNECTION	Q
Legislative District: 29		
Project Description: Improves access to transit through local bus feeder service, bicycle facilities and better pedestrian access necessary for a high-capacity transit system to transport people reliably, rapidly, and efficiently. GCA 6755		
	PIERCE TRANSIT, 112TH AND PACIFIC TRANSIT IMP.	R
Legislative District: 29		
Project Description: This project builds new transit stops with pedestrian access for east and westbound travelers on 112th St. and a northbound stop with a queue jump on Pacific/SR7 for northbound transit service. By providing the passenger transfer facilities at this intersection, PT can implement frequent, direct service via a new trunk Route 4 along 112th Street that avoids the 20-minute diversion south to the Parkland Transit Center. GCA 6761		
	PIERCE TRANSIT, PACIFIC AVE. TSP	S
Legislative Districts: 2, 29		
Project Description: Grant funds are being used to upgrade a minimum of 44 signal controllers and install associated transit signal priority equipment, signs, fiber optic cable, striping and channelization improvements on 17 miles of the Pacific Avenue/SR 7 corridor. GCA 6127		
	INTERCITY TRANSIT, HAWKS PRAIRIE PARK AND RIDE	T
Legislative District: 20		
Project Description: Grant funds are being used to design and construct a park and ride with a minimum of 300 parking stalls, at least 3 bus bays, lighting, security, signs and passenger amenities near the Marvin Road/I-5 interchange. GCA 6125		



SPOKANE TRANSIT, PLAZA IMPROVEMENTS

U

Legislative District: 3

Project Description: Grant funds are being used to improve the STA Plaza facility, and the conversion of Wall Street to a two-way street. These changes will facilitate service improvement by connecting transit users in the region. GCA 6765



CLARK COUNTY, SALMON CREEK PARK AND RIDE

V

Legislative District 18

Project Description: Grant funds are being used to design, acquire land, and construct a park and ride near NE 10th Avenue at NE 139th Street near I-5 and I-205 in Clark County. The project includes a minimum of 470 parking stalls, at least 3 bus bays, street access to the park and ride, sidewalks, landscaping, traffic signal optimization and transit priority system, and a bus-only entrance lane. GCA 6124



SDOT, NW Market/45th St. Transit Priority Bus Bulb and Widened Sidewalk