



PALLIATIVE CARE PREPARING TO MEET THE NEED

Marie Eaton, Director
Sara Weir, Deputy Director
Palliative Care Institute, Western Washington University

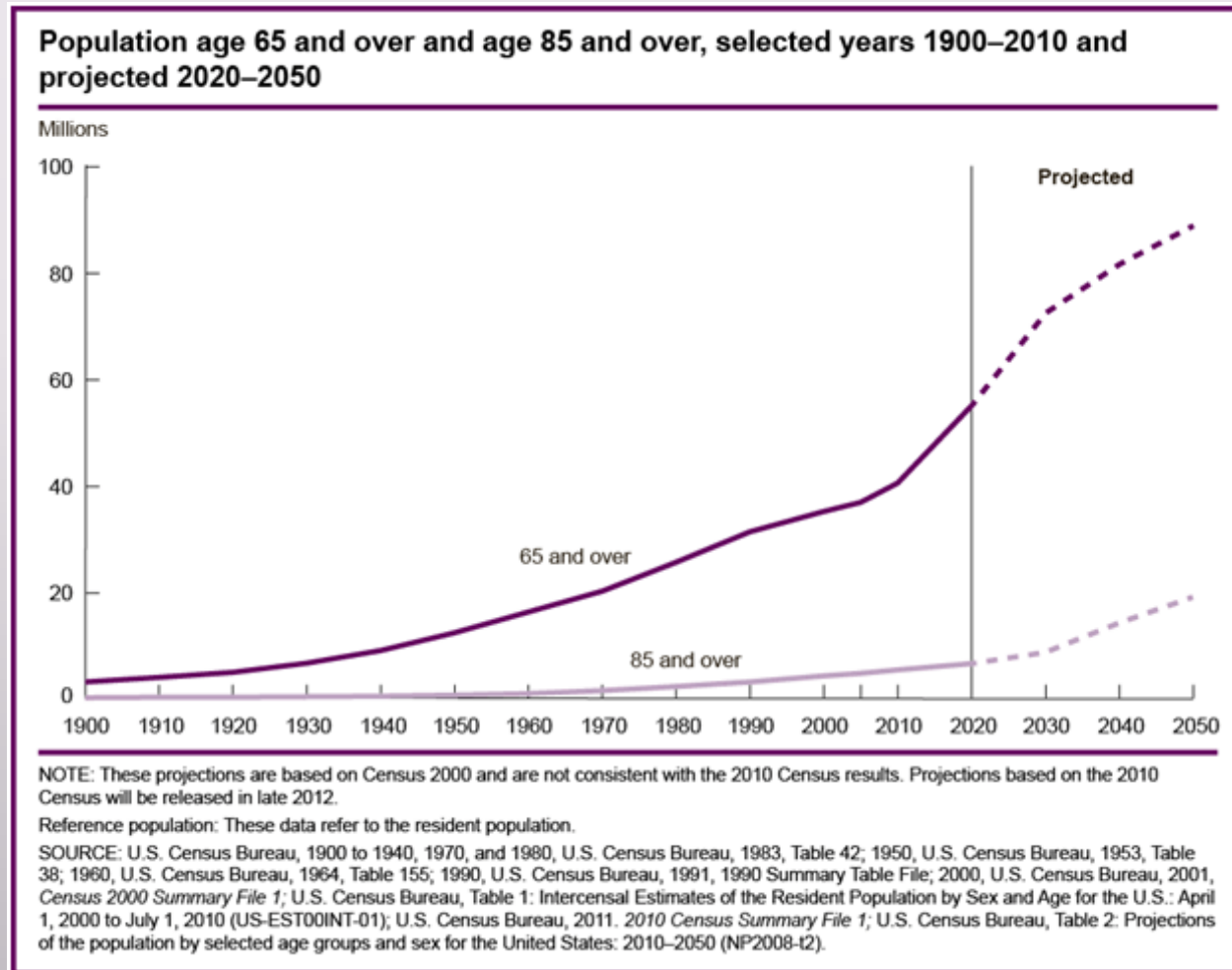
PCI@wwu.edu

What is the Palliative Care Institute?



A partnership with other members of the NorthWest Life Passages Blueprint Group to transform palliative care in Whatcom community and support the human responses to living and dying.

Need for increased palliative care services



What can we do?

Enhance palliative care services

Enhance benefits for home-based palliative care, including social service supports

Incentivize health plans to offer home-based palliative care with patient centered outcomes

Revise quality metrics for those patients nearing end of life

Enhance Medicaid benefits for home-based palliative care services and streamline COPES eligibility process



Why are social services essential?

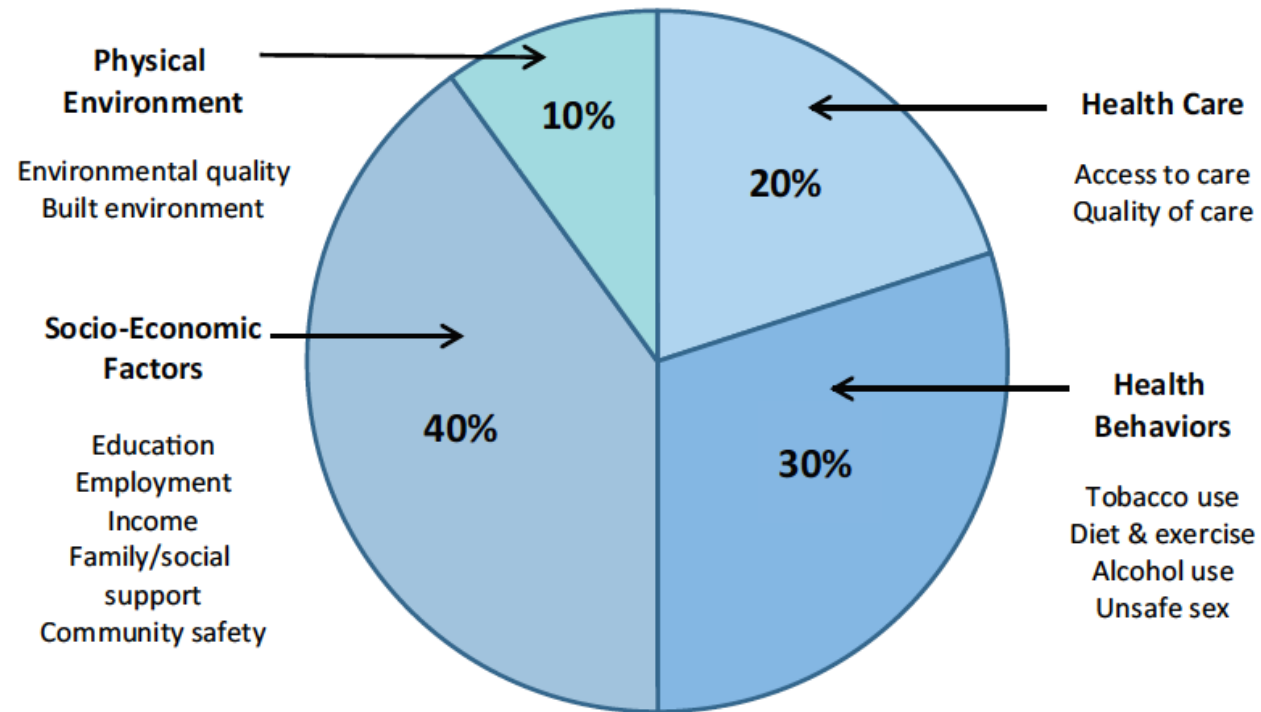


FIGURE 5-2 Social determinants of health.
SOURCE: Presented by John Cagle on July 9, 2015.

Disparate impacts in minority communities

Communities of Color often experience sub-optimal end-of-life care

- Institutional barriers – lack of insurance, under-representation in medical careers
- Cultural barriers – lack of training for providers in cultural values and practices
- Individual barriers – lack of trust in health care system because of historical discrimination



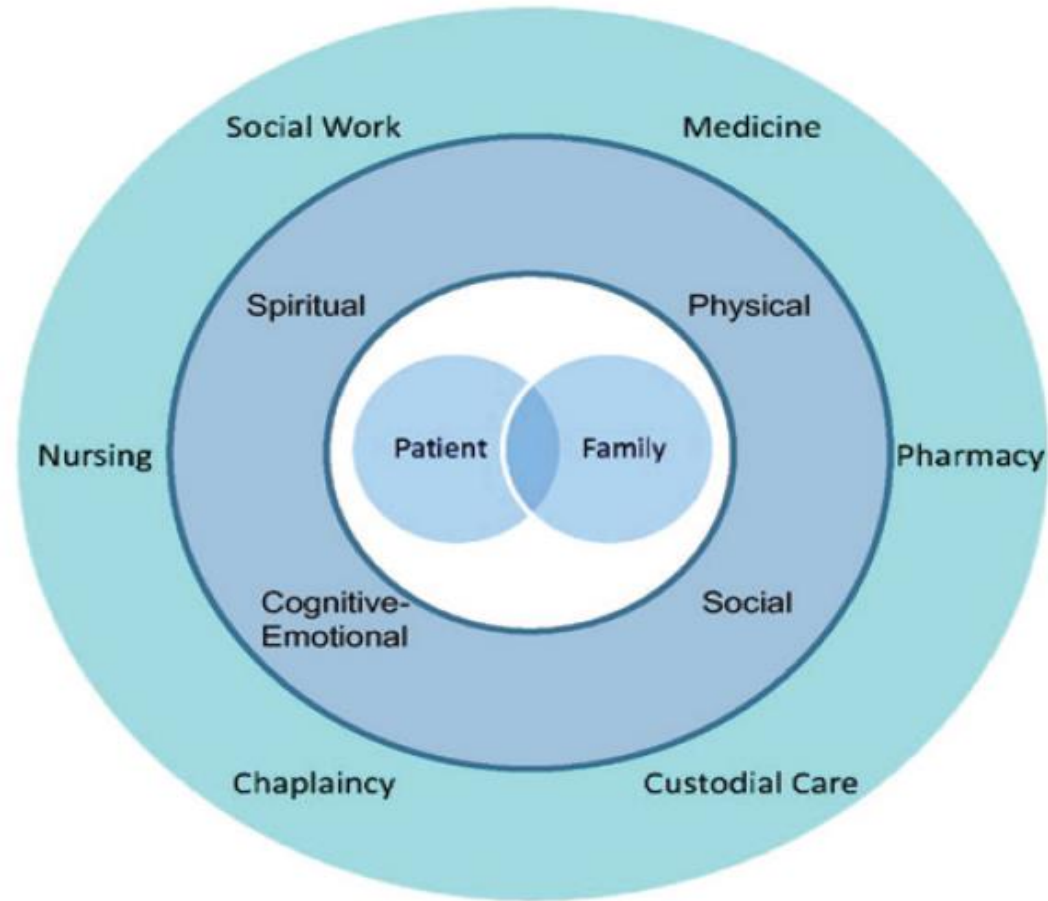


FIGURE 5-1 A graphical representation of the multidimensional nature of palliative care.

SOURCE: Presented by John Cagle on July 9, 2015.

What can we do?

Enhance provider training

More training needed in palliative care for clinicians and social service providers

- Require palliative care training for clinical licensure
- Certificate programs for continuing education

Fund training programs in culturally competent palliative care, both institutional and community based

- Broad range of careers and programs.
- Palliative Care is the next STEM



Palliative Care Institute initiatives

Provider training

CURRENT

- Sponsor Lectures, Continuing Education and Conferences
- Collaborate with WWU's RN to BSN Nursing Program
- Sponsor Student Internships

FUTURE

- Develop a culturally competent Palliative Care minor
- Develop a Palliative Care Certificate Program

What can we do?

Build an educated and activated community

Palliative Care Institute Initiatives

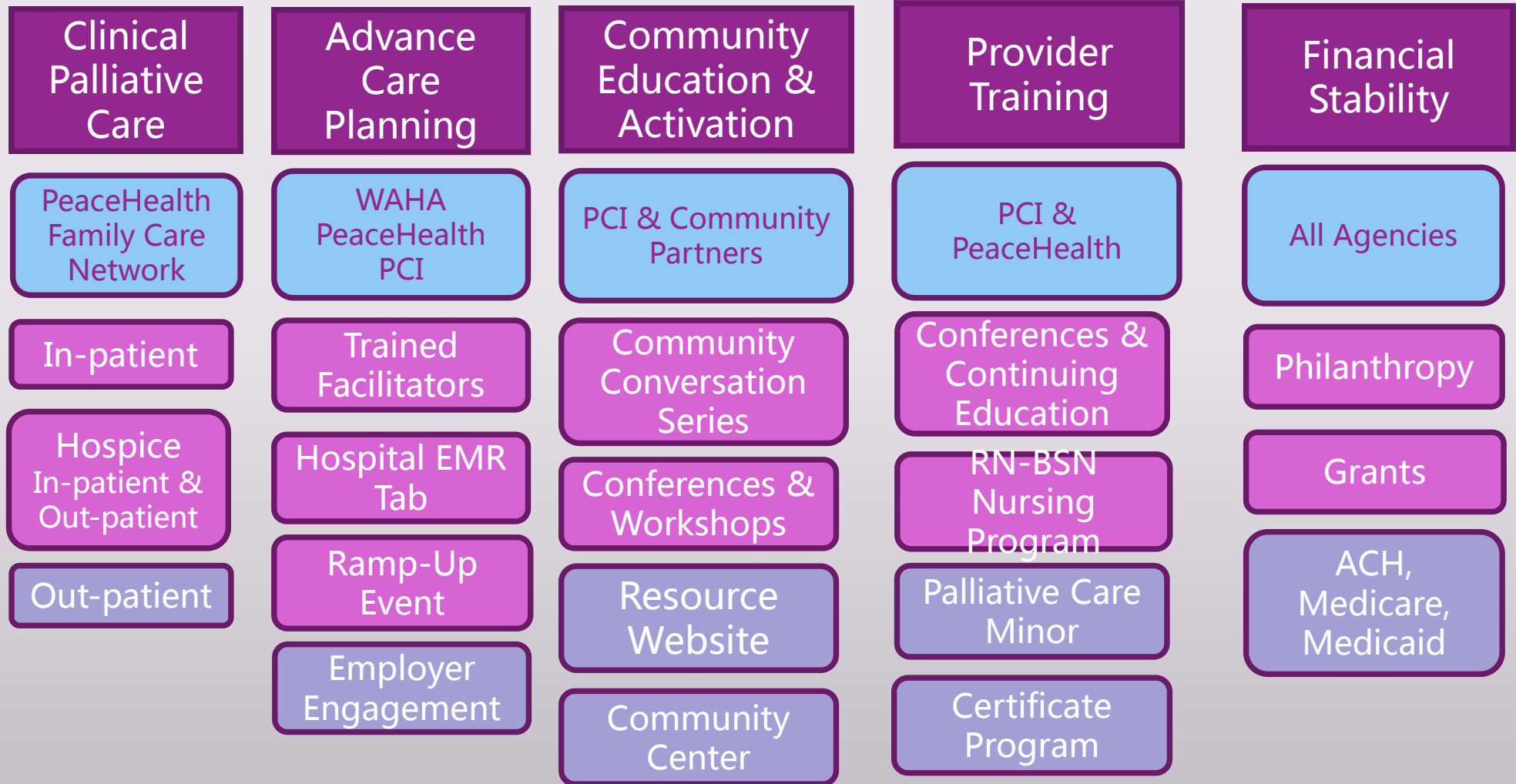
- Community conversations
- Lectures & events
- Conferences & Institutes
- Resource website
- Outreach to minority communities

Partner in other Community Initiatives

- End of Life Choices - ACP
- Death Café
- Art of Death Expo



Northwest Life Passages Blueprint



Blueprint Pillar

Lead

Current

In-progress