

EXHIBIT 1

# INDIAN RESERVATIONS WASHINGTON



insurance status

## EXHIBIT 2

<b>Washington's Federally Recognized Tribes</b>		
<b>FY 2012 IHS User Population</b>		
Tribe	IHS User Population	%Total
Chehalis Tribe	1,159	1.8%
Colville Tribe	8,481	12.8%
Cowlitz Tribes	3,190	4.8%
Hoh Tribe	26	0.0%
Jamestown S'Klallam Tribe	204	0.3%
Kalispel Tribe	565	0.9%
Lower Elwha Klallam Tribe	888	1.3%
Lummi Nation	4,305	6.5%
Makah Tribe	2,304	3.5%
Muckleshoot Tribe	4,857	7.3%
Nisqually Tribe	1,872	2.8%
Nooksack Tribe	1,190	1.8%
Port Gamble S'Klallam Tribe	1,609	2.4%
Puyallup Tribe	7,042	10.6%
Quileute Tribe	725	1.1%
Quinault Indian Nation	2,605	3.9%
Samish Indian Nation	710	1.1%
Sauk-Suiattle Tribe	37	0.1%
Shoalwater Bay Tribe	417	0.6%
Skokomish Tribe	832	1.3%
Snoqualmie Tribe	412	0.6%
Spokane Tribe	1,681	2.5%
Squaxin Island Tribe	743	1.1%
Stillaguamish Tribe	107	0.2%
Suquamish Tribe	558	0.8%
Swinomish Tribe	1,288	1.9%
Tulalip Tribe	5,023	7.6%
Upper Skagit Tribe	506	0.8%
Yakama Indian Nation	12,862	19.4%
<b>Total</b>	<b>66,198</b>	<b>100.0%</b>
<b>Average</b>	<b>2,283</b>	
Source: DHHS "Final IHS Population Estimates - FY 2012 (12-21-12)"		

### EXHIBIT 3

<b>Medicaid Tribal Health Programs (IHS Recognized)</b>									
	Tribe	Government Status	Number of Clinics	Medicaid Programs					Total
				Medical	Dental	Pharmacy	Mental Health	Chemical Dependence	
1	Chehalis	638	2	1	1		1	1	4
2	Colville	IHS/638	5	4	3	2	2	3	14
3	Cowlitz	638	3	2			2	2	6
4	Hoh	638							0
5	Jamestown S'Klallam	638	2	1	1		1	1	4
6	Kalispel	638	2	1	1	1	2	1	6
7	Lower Elwha S'Klallam	638	2	2	1		1	1	5
8	Lummi	638	4	2	1	1	2	1	7
9	Makah	638	3	1	1	1	1	1	5
10	Muckleshoot	638	2	1	1	1	1	1	5
11	Nisqually	638	1	1	1	1	1	1	5
12	Nooksack	638	2	1	1		2	1	5
13	Port Gamble S'Klallam	638	2	1	1		1	1	4
14	Puyallup	638	3	1	1	1	1	1	5
15	Quileute	638	1	1	1		1	1	4
16	Quinault	638	1	1	1	1	1	1	5
17	Samish	638	1	1					1
18	Sauk-Suiattle	638	1				1	1	2
19	Shoalwater Bay	638	1	1	1		1	1	4
20	Skokomish	638	1	1	1		1	1	4
21	Snoqualmie	638	3	2			1	1	4
22	Spokane	IHS/638	2	1	1	1	1		4
23	Squaxin Island	638	2	1	1	1	1	1	5
24	Suquamish	638	1				1	1	2
25	Stillaguamish	638	3	1	1	1	1	3	7
26	Swinomish	638	4	1	1		1	1	4
27	Tulalip	638	4	1	1	1	2	1	6
28	Upper Skagit Total	638	1	1	1		1	1	4
29	Yakama	IHS	2	2	1	1	1	1	6
<b>Total Number of Programs</b>			<b>61</b>	<b>34</b>	<b>25</b>	<b>14</b>	<b>33</b>	<b>31</b>	<b>137</b>
<b>Total Number of Tribes</b>			<b>29</b>	<b>26</b>	<b>23</b>	<b>13</b>	<b>27</b>	<b>26</b>	

<b>Medicaid Urban Indian Health Clinics (FQHC Status)</b>									
Program Name	Govn. Stat		Medicaid Programs					Total	
			Medical	Dental	Pharmacy	Mental Health	Chemical Dependence		
Total Seattle Indian Health Board	FQHC		x	x		x	x	4	
Total NATIVE Project of Spokane	FQHC		x					1	
<b>Total</b>	<b>2</b>	<b>2</b>	<b>2</b>	<b>1</b>	<b>0</b>	<b>1</b>	<b>1</b>	<b>5</b>	

## EXHIBIT 4

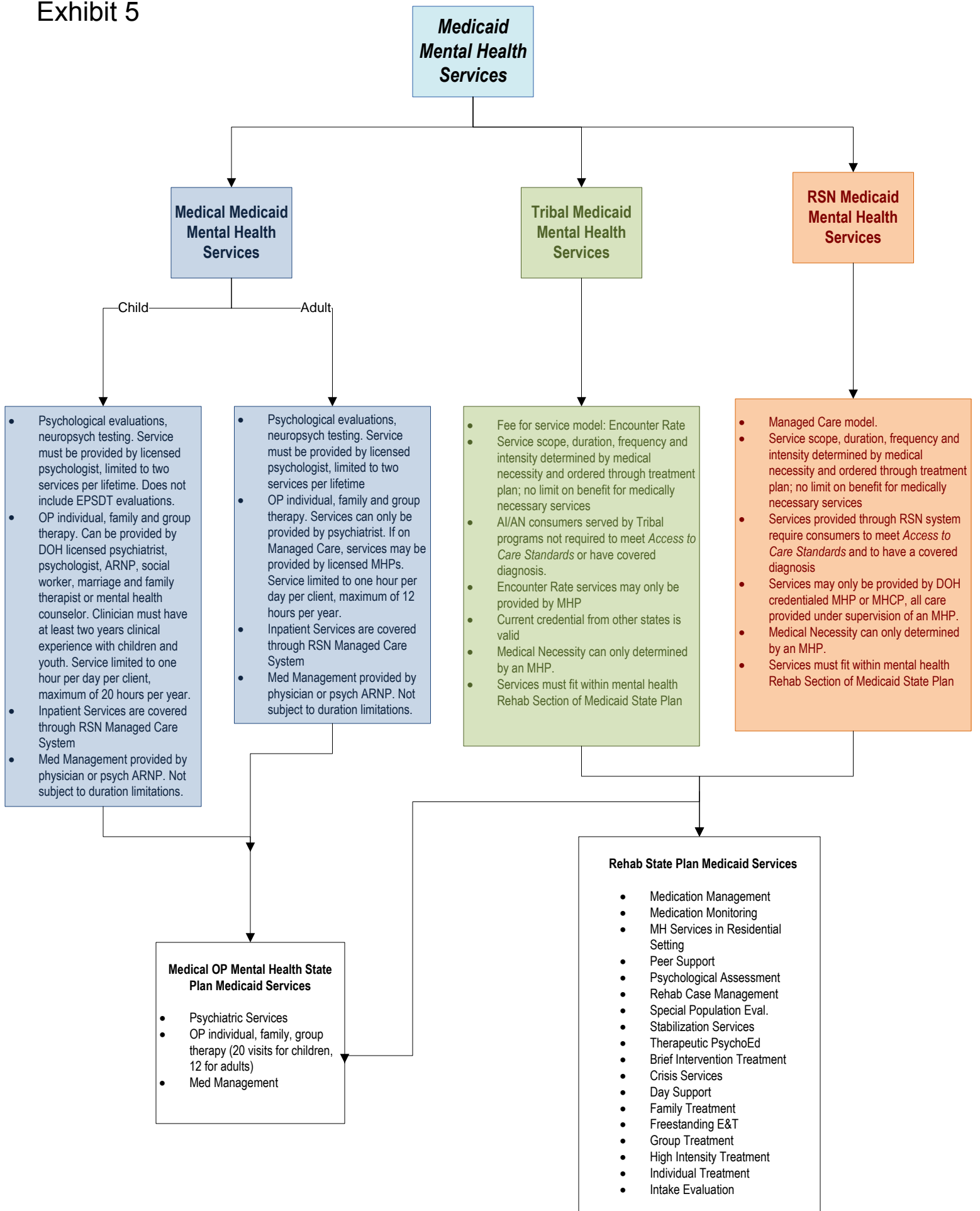
SFY 2011 TRIBAL FACILITY MMIS PAYMENTS									
Payment Type	Payments		Payment Profile			Clients Served			
	Amount	Percent	AI/AN	Non Native	% AI/AN	AI/AN	Non Native	Total	%AI/AN
Medical Encounter Payments	\$16,428,548	31.5%	\$13,615,860	\$2,812,688	82.9%	10,317	4,299	14,616	70.6%
Dental Encounter Payments	\$6,079,484	11.6%	\$4,111,190	\$1,968,294	67.6%	5,469	4,295	9,764	56.0%
Mental Health Encounter Payments	\$13,155,123	25.2%	\$13,014,882	\$140,241	98.9%	2,600	634	3,234	80.4%
Psychiatric Encounter Payments	\$124,348	0.2%	\$124,348	\$0	100.0%	85	22	107	79.4%
Chemical Dependency Treatment Encounter Payments	\$12,141,894	23.3%	\$6,505,943	\$5,635,951	53.6%	883	767	1,650	53.5%
<b>Total IHS/CMS Encounter Rate Payments</b>	<b>\$47,929,397</b>	<b>91.8%</b>	<b>\$37,372,223</b>	<b>\$10,557,174</b>	<b>78.0%</b>	<b>12,681</b>	<b>8,350</b>	<b>21,031</b>	<b>60.3%</b>
Pharmacy Payments *	\$2,499,434	4.8%	\$2,154,269	\$345,165	86.2%	7,769	1,774	9,543	81.4%
PCCM Payments *	\$216,990	0.4%	\$205,314	\$11,676	94.6%	10,488	701	11,189	93.7%
Medical Fee-For-Service	\$1,275,545	2.4%	\$959,298	\$316,247	75.2%	1,692	835	2,527	67.0%
Dental Fee-For-Service *	\$92,401	0.2%	\$35,625	\$56,776	38.6%	353	599	952	37.1%
Chemical Dependency Fee-For-Service	\$200,766	0.4%	\$199,670	\$1,096	99.5%	60	86	146	41.1%
<b>Total FFS Payments</b>	<b>\$4,285,136</b>	<b>8.2%</b>	<b>\$3,554,176</b>	<b>\$730,960</b>	<b>82.9%</b>	<b>16,129</b>	<b>3,577</b>	<b>19,706</b>	<b>81.8%</b>
<b>Total</b>	<b>\$52,214,533</b>	<b>100.0%</b>	<b>\$40,926,399</b>	<b>\$11,288,134</b>	<b>78.4%</b>	<b>20,405</b>	<b>10,223</b>	<b>30,628</b>	<b>66.6%</b>

Source: MMIS payment analysis (08/03/12) P1 DATAWAREHOUSE

NOTE: \* Expenditures are calculated by race code

NOTE: Expenditures are only for services covered under the Medicaid, SCHIP and Medicare Care Services programs administered by DASA, MAA and MHD. Expenditures do not include any long-term care services.

# Exhibit 5



## EXHIBIT 6

<b>SFY 2011 Medicaid Mental Illness Diagnoses &amp; Chemical Dependency Need - Statewide</b>																
Indicators ( FY 2010 - 2011)	Age 0-20				Age 21-64				Age 65 & older				Total All Ages			
	AI/AN		Non-Natives		AI/AN		Non-Natives		AI/AN		Non-Natives		AI/AN		Non-Natives	
	Total	Percent	Total	Percent	Total	Percent	Total	Percent	Total	Percent	Total	Percent	Total	Percent	Total	Percent
<b>Any MI diagnoses</b>	10,675	24.1%	82,315	10.7%	15,773	51.4%	150,382	40.0%	891	41.8%	25,946	33.9%	27,339	35.4%	258,643	21.2%
Psychotic	515	1.2%	3,388	0.4%	2,994	9.8%	27,902	7.4%	203	9.5%	5,015	6.5%	3,712	4.8%	36,305	3.0%
Mania & Bipolar	1,596	3.6%	11,659	1.5%	5,584	18.2%	49,896	13.3%	486	22.8%	14,064	18.4%	7,666	9.9%	75,619	6.2%
Depression	3,644	8.2%	29,720	3.9%	10,761	35.1%	100,125	26.6%	459	21.5%	12,592	16.4%	14,864	19.3%	142,437	11.7%
Anxiety Disorder	5,644	12.7%	39,655	5.2%	9,264	30.2%	79,133	21.1%	248	11.6%	6,052	7.9%	15,156	19.6%	124,840	10.2%
ADHD	2,896	6.5%	23,805	3.1%	607	2.0%	5,074	1.4%	9	0.4%	297	0.4%	3,512	4.6%	29,176	2.4%
Adjustment disorder	2,592	5.8%	14,373	1.9%	1,174	3.8%	8,341	2.2%	26	1.2%	612	0.8%	3,792	4.9%	23,326	1.9%
<b>Any Psychotropic Rx</b>	6,620	14.9%	62,267	8.1%	16,125	52.5%	161,929	43.1%	971	45.6%	30,732	40.1%	23,716	30.7%	254,928	20.9%
Antipsychotic Rx	1,286	2.9%	9,122	1.2%	5,333	17.4%	49,059	13.1%	212	9.9%	6,936	9.1%	6,831	8.9%	65,117	5.3%
Antimania Rx	114	0.3%	782	0.1%	673	2.2%	6,365	1.7%	8	0.4%	159	0.2%	795	1.0%	7,306	0.6%
Antidepressant Rx	1,885	4.3%	17,276	2.2%	9,057	29.5%	84,031	22.4%	523	24.5%	16,144	21.1%	11,465	14.9%	117,451	9.6%
Antianxiety Rx	2,814	6.4%	23,577	3.1%	12,546	40.9%	125,292	33.3%	665	31.2%	20,372	26.6%	16,025	20.8%	169,241	13.9%
ADHD Rx	3,316	7.5%	31,681	4.1%	869	2.8%	9,134	2.4%	9	0.4%	290	0.4%	4,194	5.4%	41,105	3.4%
<b>Any MI Dx or Psychotropic Rx</b>	12,879	29.1%	111,289	14.5%	19,037	62.0%	189,634	50.5%	1,239	58.1%	38,608	50.4%	33,155	43.0%	339,531	27.8%
<b>Alcohol/drug Treatment Need</b>	2,886	6.5%	15,578	2.0%	11,887	38.7%	75,460	20.1%	230	10.8%	2,041	2.7%	15,003	19.4%	93,079	7.6%
<b>Co-occurring MI and AOD Tx Need</b>	1,815	4.1%	8,241	1.1%	8,774	28.6%	56,139	14.9%	152	7.1%	1,487	1.9%	10,741	13.9%	65,867	5.4%
<b>Population:</b>	<b>44,310</b>		<b>768,530</b>		<b>30,699</b>		<b>375,842</b>		<b>2,131</b>		<b>76,573</b>		<b>77,140</b>		<b>1,220,945</b>	

Source: Analysis of DSHS Integrated Client Database data by the DSHS Research and Data Analysis Division

## EXHIBIT 7

<b>SFY 2011 MEDICAID AI/AN &amp; NON-NATIVE MENTAL HEALTH SERVICE UTILIZATION</b>																
Service Category	Age 0-20				Age 21-64				Age 65 & older				Total All Ages			
	AI/AN		Non-Natives		AI/AN		Non-Natives		AI/AN		Non-Natives		AI/AN		Non-Natives	
	Total Served	Units Per 1000 MM	Total Served	Units Per 1000 MM	Total Served	Units Per 1000 MM	Total Served	Units Per 1000 MM	Total Served	Units Per 1000 MM	Total Served	Units Per 1000 MM	Total Served	Units Per 1000 MM	Total Served	Units Per 1000 MM
<b>Any DBHR-MH Service</b>	4,890		38,364		6,918		60,374		201		5,723		12,009		104,461	
Any RSN Outpatient Service	4,873	206.4	38,262	89.8	6,810	561.2	59,467	465.6	190	141.3	5,614	145.9	11,873	333.4	103,343	194.7
Psychiatric Inpatient	187	13.3	1,211	5.0	678	85.6	6,014	69.5	29	97.9	388	50.2	894	41.9	7,613	25.3
<b>Any HCA-paid MH Service</b>	5,681	201.7	56,803	101.3	13,366	1,019.0	137,817	886.8	754	526.8	24,375	450.4	19,801	507.4	218,995	335.5
Tribal MH Encounters	2,183	79.3	2,583	3.4	1,262	41.4	2,505	8.3	13	4.1	107	1.5	3,458	63.4	5,195	4.6
Medical Benefit OP Visits	1,085	12.3	13,676	9.5	1,478	31.1	15,943	30.5	6	0.6	151	0.9	2,569	18.8	29,770	14.6
Any Psychotropic Rx	5,159	94.7	49,164	45.9	13,173	494.0	135,408	428.1	751	263.1	24,344	224.8	19,083	244.3	208,916	160.4
<b>Any DBHR-MH or HCA-paid MH Service</b>	8,258		78,191		15,037		151,484		833		26,623		24,128		256,298	
<b>Total Population Size</b>	44,310		768,530		30,699		375,842		2,131		76,573		77,140		1,220,945	
<b>Total Member Months (Medicaid only)</b>	471,803		8,061,875		280,846		3,257,581		21,702		779,680		774,351		12,099,136	
<b>Total Member Months (Medicaid + SMH)</b>	471,803		8,061,887		281,154		3,260,881		21,702		779,761		774,659		12,102,529	

Source: Analysis of DSHS Integrated Client Database data by the DSHS Research and Data Analysis Division